



# CANNON LAND SURVEYING

7945 TWP RD. 114 NE  
NEW LEXINGTON, OHIO 43764  
614-342-2835  
DEED DESCRIPTION

Situated in the State of Ohio, County of Athens, Township of Rome, T-6, R-12, being a part of Federal Valley Coal Corp. Vol.268 Pg.242, being part of Section 12, and more particularly described as follows:

Beginning at an iron pin set at the Southeast corner of Section 12; thence with the South line of Section 12 South 89 Degrees 52 Minutes 22 Seconds West 1320.78 feet to an iron pin set; thence leaving said line North 03 Degrees 39 minutes 57 Seconds East 325.22 feet to a point in a run near a cave, passing an iron pin set at 285.22 feet; thence with a run the following ten courses to iron pins set: North 02 Degrees 53 Minutes 10 Seconds East 60.02 feet; thence North 49 Degrees 54 minutes 42 Seconds East 144.47 feet; thence North 14 Degrees 56 Minutes 02 Seconds East 131.08 feet; thence North 19 Degrees 29 Minutes 15 Seconds West 445.40 feet; thence North 36 Degrees 49 Minutes 10 Seconds West 211.04 feet; thence North 23 Degrees 44 Minutes 08 Seconds West 126.76 feet; thence North 30 Degrees 22 Minutes 42 Seconds West 215.66 feet; thence North 11 Degrees 44 Minutes 20 Seconds West 390.83 feet; thence North 00 Degrees 17 minutes 38 Seconds East 214.31 feet; thence North 25 Degrees 26 Minutes 13 Seconds East 111.61 feet; thence leaving said run North 01 Degrees 49 Minutes 12 Seconds East 333.98 feet to a point in Big Run Creek, passing an iron pin set at 301.39 feet; thence with said creek North 88 Degrees 16 Minutes 47 Seconds East 145.23 feet to a point; thence leaving said creek North 00 Degrees 07 minutes 07 Seconds West 129.14 feet to a point in the centerline of County Road 85, passing an iron pin set at 104.14 feet; thence with the centerline of County Road 85 the following nine courses to points: South 89 Degrees 22 Minutes 16 Seconds East 104.56 feet; thence South 87 Degrees 10 Minutes 59 Seconds East 179.30 feet; thence South 83 Degrees 43 Minutes 29 Seconds East 181.29 feet; thence South 79 Degrees 44 Minutes 50 Seconds East 251.67 feet; thence South 75 Degrees 52 Minutes 58 Seconds East 122.89 feet; thence South 71 Degrees 32 Minutes 05 Seconds East 177.69 feet; thence South 69 degrees 19 Minutes 57 Seconds East 176.80 feet; thence South 65 Degrees 53 Minutes 57 Seconds East 276.52 feet; thence South 69 Degrees 29 Minutes 44 Seconds East 43.72 feet to a point on the Athens and Washington County line; thence with said line South 00 Degrees 07 Minutes 07 Seconds East 2305.78 feet to the place of beginning, passing an iron pin set at 25.00 feet, containing 84.25 acres, more or less, subject to all legal highways and easements.

See plat attached.

Subject to R/W of County Road 85.

Iron pins set are 5/8 inch rebar with plastic identification caps.

Bearings are based on the East Line of Section 12 as being South 00 Degrees 07 Minutes 07 Seconds East.

This description was written from a survey made by Kevin Cannon 7224 July 24, 1996.

Description checked for  
Mathematical Accuracy  
ATHENS COUNTY  
ENGINEER'S OFFICE  
BY: S. Blausen  
DATE: 9-30-96

Kevin Cannon  
Reg. No. 7224

7/24/96  
Date



32

ROM #12

# Cannon Land Surveying

7945 Twp. Rd. 114 NE  
New Lexington, Ohio 43764  
(614) 342-2835

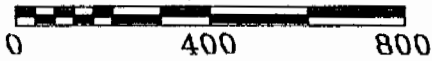


Bearings Shown Hereon are to an Assumed Meridian and Are Used to Denote Angles Only.  
Data References: U. S. G. S. Maps, Tax Maps, Deed Descriptions, and Existing Monumentation.

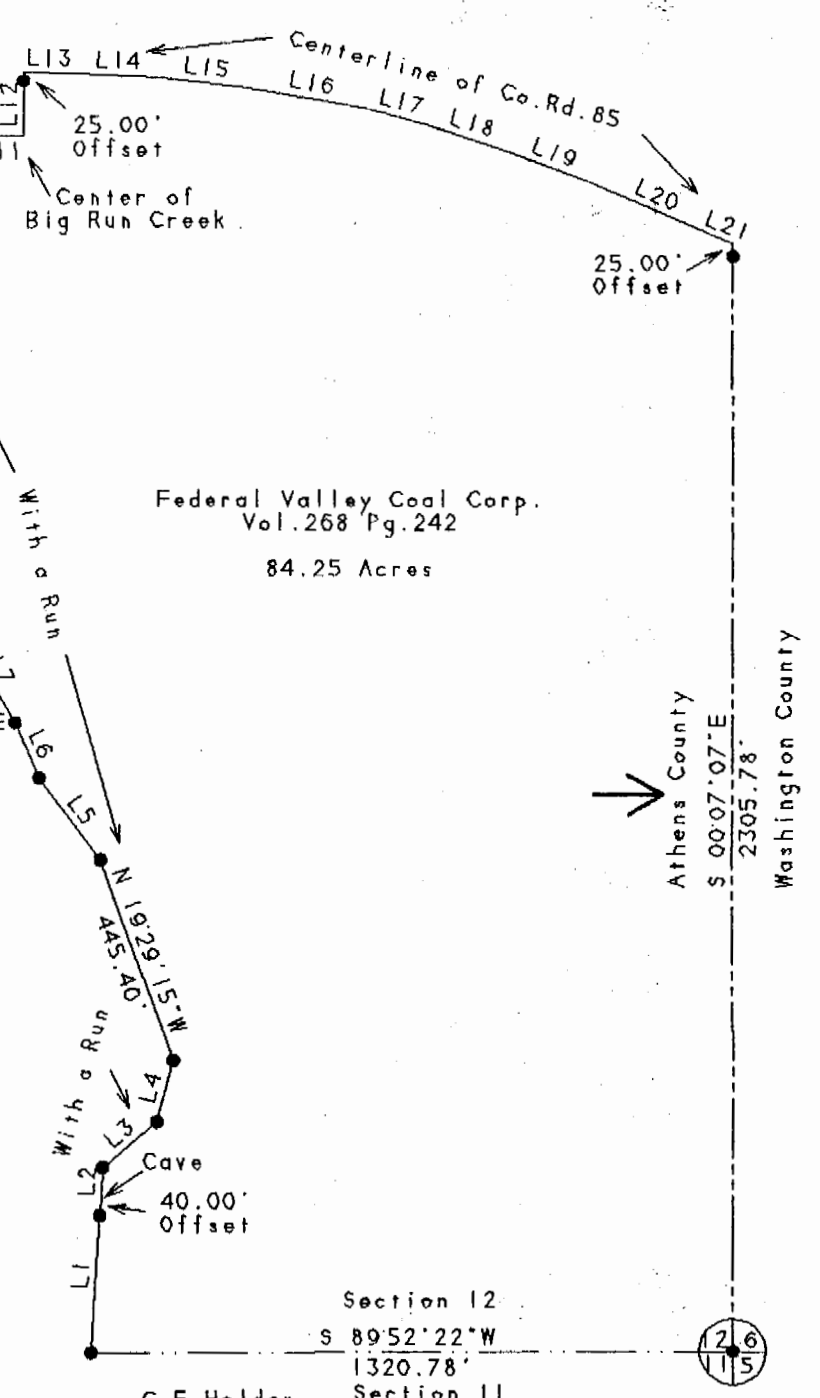
This Survey is Subject to any Facts That May be Disclosed by a Full and Accurate Title Search.

Daniel J. Wilkins  
Vol. 302 Pg. 582

Scale 1" = 400'



LINE	BEARING	DISTANCE
L 1	N 03°39'57"E	325.22'
L 2	N 02°53'10"E	60.02'
L 3	N 49°54'42"E	144.47'
L 4	N 14°56'02"E	131.08'
L 5	N 36°49'10"W	211.04'
L 6	N 23°44'08"W	126.76'
L 7	N 30°22'42"W	215.66'
L 8	N 00°17'38"E	214.31'
L 9	N 25°26'13"E	111.61'
L 10	N 01°49'12"E	333.98'
L 11	N 88°16'47"E	145.23'
L 12	N 00°07'07"W	129.14'
L 13	S 89°22'16"E	104.56'
L 14	S 87°10'59"E	179.30'
L 15	S 83°43'29"E	181.29'
L 16	S 79°44'50"E	251.67'
L 17	S 75°52'58"E	122.89'
L 18	S 71°32'05"E	177.69'
L 19	S 69°19'57"E	176.80'
L 20	S 65°53'57"E	276.52'
L 21	S 69°29'44"E	43.72'



Federal Valley Coal Corp.  
Vol. 268 Pg. 242  
84.25 Acres

C.F. Holden  
Vol. 222 Pg. 486

## Legend

- Iron Pin Set
- 5/8" Rebar W/Cap
- Iron Pin Found
- ⊗ Post
- ▲ R. R. Spike Set
- △ R. R. Spike Found
- ⊙ Drilled Hole 5/8"
- Stone Found
- PK Nail Set
- ⊙ PK Nail Found
- ✕✕ Fence
- ➔ Basis Of Bearings

33

Kevin Cannon  
Reg. # 7224

7/24/96  
Date

Survey For: Paul Oberhausen  
State: Ohio  
County: Athens  
Township: Rome  
T- 6 R- 12 Lot: N/A  
Section: 12  
City or Village: N/A  
Subdivision: N/A



Checked for Accuracy  
COUNTY ENGINEER'S OFFICE  
S. Blaus  
DATE: 9-30-96