

BRANNER SURVEYING

MEMBER-PROFESSIONAL LAND SURVEYORS OF OHIO

12500 N. PEACH RIDGE ROAD
ATHENS, OHIO 45701

JOHN M. BRANNER
Registered Land Surveyor

TELEPHONE
(614) 592-5778

DESCRIPTION OF A 0.74 ACRE TRACT

Situated in Section 16, T.6, R.12 Rome township, Athens County, Ohio and being more particularly described as follows:

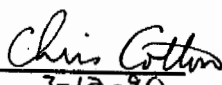
Commencing at a point where the North-line of the South-half of Section 16 intersects with the center-line of State Route 329, said point being the North-west corner of the Patricia K. Wilson 40 acre tract (Vol. 370, Page 318) and where an iron pin found bears East, 30.74 feet ; thence with center-line of State Route 329 the following courses and distances:

South 03 Degrees 04 Minutes 17 Seconds East, 118.50 feet
South 00 Degrees 11 Minutes 48 Seconds East, 165.27 feet
South 26 Degrees 03 Minutes 38 Seconds East, 92.94 feet
South 41 Degrees 46 Minutes 11 Seconds East, 123.98 feet
South 51 Degrees 27 Minutes 17 Seconds East, 229.31 feet
South 50 Degrees 25 Minutes 44 Seconds East, 298.37 feet
South 47 Degrees 56 Minutes 14 Seconds East, 328.22 feet
South 46 Degrees 55 Minutes 47 Seconds East, 226.84 feet to
the point of beginning for the tract of land herein described:

thence, leaving said road, South 27 Degrees 41 Minutes 33 Seconds West, 186.87 feet to an iron pin set, passing an iron pin set at 30.74 feet; thence, South 74 Degrees 47 Minutes 28 Seconds East, 329.23 feet to a point in State route 329, passing an iron pin set at 285.51 feet; thence, along State Route 329, North 36 Degrees 20 Minutes West, 123.20 feet to a point; thence, North 45 Degrees 58 Minutes 23 Seconds West, 219.55 feet to the point of beginning and containing 0.74 acres.

Subject to all easements and rights of way of record.


John M. Branner P.S. 6805

Description checked for
Mathematical Accuracy
ATHENS COUNTY
ENGINEER'S OFFICE
BY: 
DATE: 3-12-90

Rem #16

BRANNER SURVEYING
MEMBER-PROFESSIONAL LAND SURVEYORS OF OHIO

12500 N. PEACH RIDGE ROAD
ATHENS, OHIO 45701

JOHN M. BRANNER
Registered Land Surveyor

File → Bran 349
name

TELEPHONE
(614) 592-5778

ⁱⁿ
"Platbk7"

DESCRIPTION OF A 34.90 ACRE TRACT

Situated in Section 16, T.6, R.12 Rome township, Athens County, Ohio and being more particularly described as follows:

Beginning at a point where the North-line of the South-half of Section 16 intersects with the center-line of State Route 329, said point being the North-west corner of the Patricia K. Wilson 40 acre tract (Vol. 370, Page 318) and where an iron pin found bears East, 30.74 feet; thence with center-line of State Route 329 the following courses and distances:

South 03 Degrees 04 Minutes 17 Seconds East, 118.50 feet
South 00 Degrees 11 Minutes 48 Seconds East, 165.27 feet
South 26 Degrees 03 Minutes 38 Seconds East, 92.94 feet
South 41 Degrees 46 Minutes 11 Seconds East, 123.98 feet
South 51 Degrees 27 Minutes 17 Seconds East, 229.31 feet
South 50 Degrees 25 Minutes 44 Seconds East, 298.37 feet
South 47 Degrees 56 Minutes 14 Seconds East, 328.22 feet
South 46 Degrees 55 Minutes 47 Seconds East, 226.84 feet

thence, leaving said road, South 27 Degrees 41 Minutes 33 Seconds West, 186.87 feet to an iron pin set, passing an iron pin set at 30.74 feet; thence, South 74 Degrees 47 Minutes 28 Seconds East, 329.23 feet to a point in State route 329, passing an iron pin set at 285.51 feet; thence, along State Route 329, South 36 Degrees 20 Minutes 08 Seconds East, 82.98 feet to a point; thence, South 22 Degrees 47 Minutes 42 Seconds East, 180.63 feet to a point at the intersection of State route 329 with County Road 109; thence, with said County Road the following courses and distances:

South 85 Degrees 45 Minutes 25 Seconds East, 145.03 feet
South 47 Degrees 52 Minutes 55 Seconds East, 149.80 feet
South 26 Degrees 23 Minutes 24 Seconds East, 212.02 feet
South 17 Degrees 57 Minutes 55 Seconds East, 54.96 feet
South 25 Degrees 03 Minutes 33 Seconds East, 133.15 feet
South 28 Degrees 22 Minutes 23 Seconds East, 125.54 feet
South 19 Degrees 55 Minutes 29 Seconds East, 205.97 feet
South 21 Degrees 04 Minutes 46 Seconds East, 158.01 feet
South 32 Degrees 39 Minutes 44 Seconds East, 130.14 feet
South 43 Degrees 15 Minutes East, 108.21 feet
South 55 Degrees 32 Minutes 30 Seconds East, 141.27 feet to
to a rail road spike set;

CONTINUED ON NEXT PAGE

2
Rom 16

BRANNER SURVEYING

MEMBER-PROFESSIONAL LAND SURVEYORS OF OHIO

12500 N. PEACH RIDGE ROAD
ATHENS, OHIO 45701

JOHN M. BRANNER
Registered Land Surveyor

TELEPHONE
(614) 592-5778

thence, leaving said road, North 89 Degrees 55 Minutes 17 Seconds West, 233.26 feet to a point in center of the Hocking River, passing an iron pin set at 43.15 feet; thence, along said river, North 25 Degrees 33 Minutes 36 Seconds West, 260.64 feet to a point where the Hocking River meets Federal Creek; thence, along Federal Creek the following courses and distances:

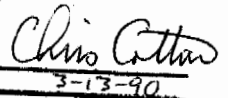
North 15 Degrees 48 Minutes West, 275.41 feet
North 27 Degrees 07 Minutes 16 Seconds West, 230.33 feet
North 59 Degrees 01 Minutes 28 Seconds West, 375.98 feet
North 61 Degrees 07 Minutes 19 Seconds West, 779.58 feet
North 75 Degrees 46 Minutes 27 Seconds West, 366.23 feet
North 69 Degrees 46 Minutes 30 Seconds West, 404.97 feet
North 49 Degrees 36 Minutes West, 308.59 feet
North 26 Degrees 33 Minutes 54 Seconds West, 145.34 feet
North 07 Degrees 45 Minutes 55 Seconds East, 222.04 feet
North 05 Degrees 42 Minutes 38 Seconds West, 201.00 feet
North 12 Degrees 25 Minutes 33 Seconds East, 605.09 feet to
a point in the half-section line of Section 16;

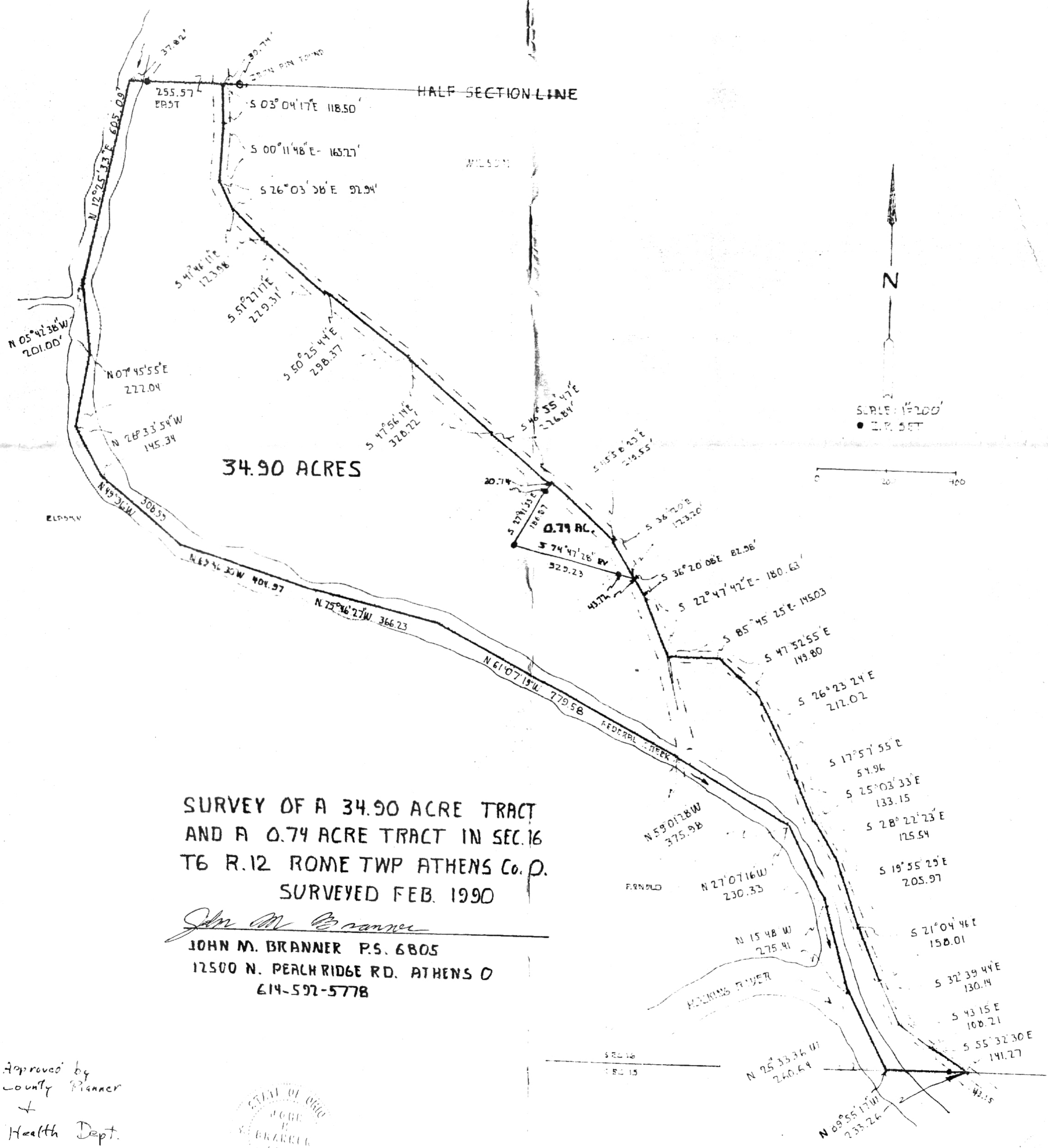
thence, along said line, East, 255.57 feet (passing an iron pin set in line tree stump) to a point in State Rote 329, said point being the point of beginning and containing 34.90 acres.

Subject to all easement and rights of way of record.


John M. Branner P. S. 6805

Description checked for
Mathematical Accuracy
ATHENS COUNTY
ENGINEER'S OFFICE
BY: _____
DATE: _____


3-13-90



SURVEY OF A 34.90 ACRE TRACT
 AND A 0.74 ACRE TRACT IN SEC. 16
 T6 R. 12 ROME TWP ATHENS Co. O.
 SURVEYED FEB. 1990

John M. Branner
 JOHN M. BRANNER P.S. 6805
 12500 N. PEACH RIDGE RD. ATHENS O
 614-592-5778

Approved by
 County Planner
 +
 Health Dept.

