

SURVEY DESCRIPTION OF A 171.463 ACRE TRACT ON STATE ROUTE 329

Situated in Rome Township, Athens County, Ohio; being part of Section 18, Township 6, Range 12; and being more particularly described as follows:

Commencing for reference at a 5/8" iron pin found at the Northwest corner of Section 18; thence with the West line of Section 18 South 0 degrees 00 minutes 00 seconds West a distance of 1674.67 feet to a 5/8" iron pin set, passing 5/8" iron pins set at distances of 294.68 feet and 998.31 feet, and being the point of **Beginning** of the tract of land to be described;

thence leaving the West line of Section 18 North 77 degrees 47 minutes 26 seconds East a distance of 2275.04 feet to a PK nail set in the center of State Route 329, and passing a 5/8" iron pin set at a distance of 2245.04 feet;

thence with the center of State Route 329 the following two bearings and distances:

- 1) South 74 degrees 45 minutes 10 seconds East a distance of 50.18 feet to a PK nail set;
- 2) South 78 degrees 25 minutes 02 seconds East a distance of 63.11 feet to a PK nail set;

thence leaving the center of State Route 329 South 12 degrees 05 minutes 53 seconds East a distance of 798.92 feet to a 5/8" iron pin set and passing a 5/8" iron pin set at a distance of 614.68 feet;

thence South 16 degrees 03 minutes 15 seconds West a distance of 2006.24 feet and passing 5/8" iron pins set at distances of 190.90 feet, 395.51 feet, 601.60 feet, 806.77 feet, 1008.25 feet, 1206.24 feet 1406.24 feet, 1606.24 feet, and 1806.24 feet;

thence South 73 degrees 56 minutes 45 seconds East a distance of 1252.22 feet to a point in the center of Federal Creek, passing 5/8" iron pins set at distances of 841.36 feet, 985.66 feet and 1055.66 feet feet and passing a MAG nail set in the center of State Route 329 at a distance of 1015.66 feet;

thence with the center of Federal Creek the following two bearings and distances:

- 1) South 14 degrees 40 minutes 59 seconds West a distance of 186.08 feet to a point;
- 2) South 18 degrees 43 minutes 45 seconds West a distance of 13.99 feet to a point;

thence leaving the center of Federal Creek North 73 degrees 56 minutes 45 seconds West a distance of 1256.02 feet to a 5/8" iron pin set, passing 5/8" iron pins set at distances of 271.79 feet, 301.79 feet, and 379.18 feet and a MAG nail set in the center of State Route 329 at a distance of 286.79 feet;

thence South 0 degrees 00 minutes 00 seconds West a distance of 1298.59 feet to a 5/8" iron pin set on the South line of Section 18 and passing 5/8" iron pins set at distances of 208.12 feet, 416.24 feet, 624.79 feet and 978.40 feet;

thence with the South line of Section 18 South 89 degrees 26 minutes 29 seconds West a distance of 901.23 feet to a 5/8" iron pin set;

thence leaving the South line of Section 18 North 0 degrees 00 minutes 00 seconds East a distance of 1128.60 feet to a 5/8" iron pin set;

thence North 67 degrees 35 minutes 42 seconds West a distance of 1070.78 feet to a 5/8" iron pin set on the West line of Section 18;

thence with the West line of Section 18 North 0 degrees 00 minutes 00 seconds East a distance of 2216.75 feet to the point of beginning, containing 171.463 acres more or less, and subject to the public easement of State Route 329 and any other public or private easements of record.

The above 171.463 acre survey is intended to describe part of the 341.034 acre tract as deeded to Larry P. Gerstner and James C. Britton by deed reference Volume OR263, Page 1295, Athens County Recorder's Office. This survey was based upon information obtained from tax maps, deed descriptions, previous surveys, existing monumentation, and an existing public road. The reference bearing for this survey is the West line of Section 18 as North 0 degrees 00 minutes 00 seconds East. Bearings are based upon an assumed meridian and are to denote angles only. All iron pins set by this survey are 5/8" by 30" and are capped by a 1-1/4" plastic identification cap stamped LPG-6344. The above described property was surveyed by Larry P. Gerstner, Ohio Registered Surveyor No. 6344, on February 22, 1998, December 14, 1998, September 23, 1999, October 18, 1999, and January 25, 2000.



Description checked for
Mathematical Accuracy
ATHENS COUNTY
ENGINEER'S OFFICE
BY: S. Blause
DATE: 3-27-2000

Larry P. Gerstner

000014

Survey by:
Larry P. Gerstner - Engineering and Surveying
9 East Second Street, Suite A, Logan, Ohio 43138 385-4260

20m #18

PLAT OF A 171.463 ACRE TRACT ON STATE ROUTE 329

Situated in Rome Township, Athens County, Ohio; being part of Section 18, Township 6, Range 12.

REFERENCES:

- Tax maps
- Deed descriptions
- Previous surveys
- Existing monumentation
- Existing public road

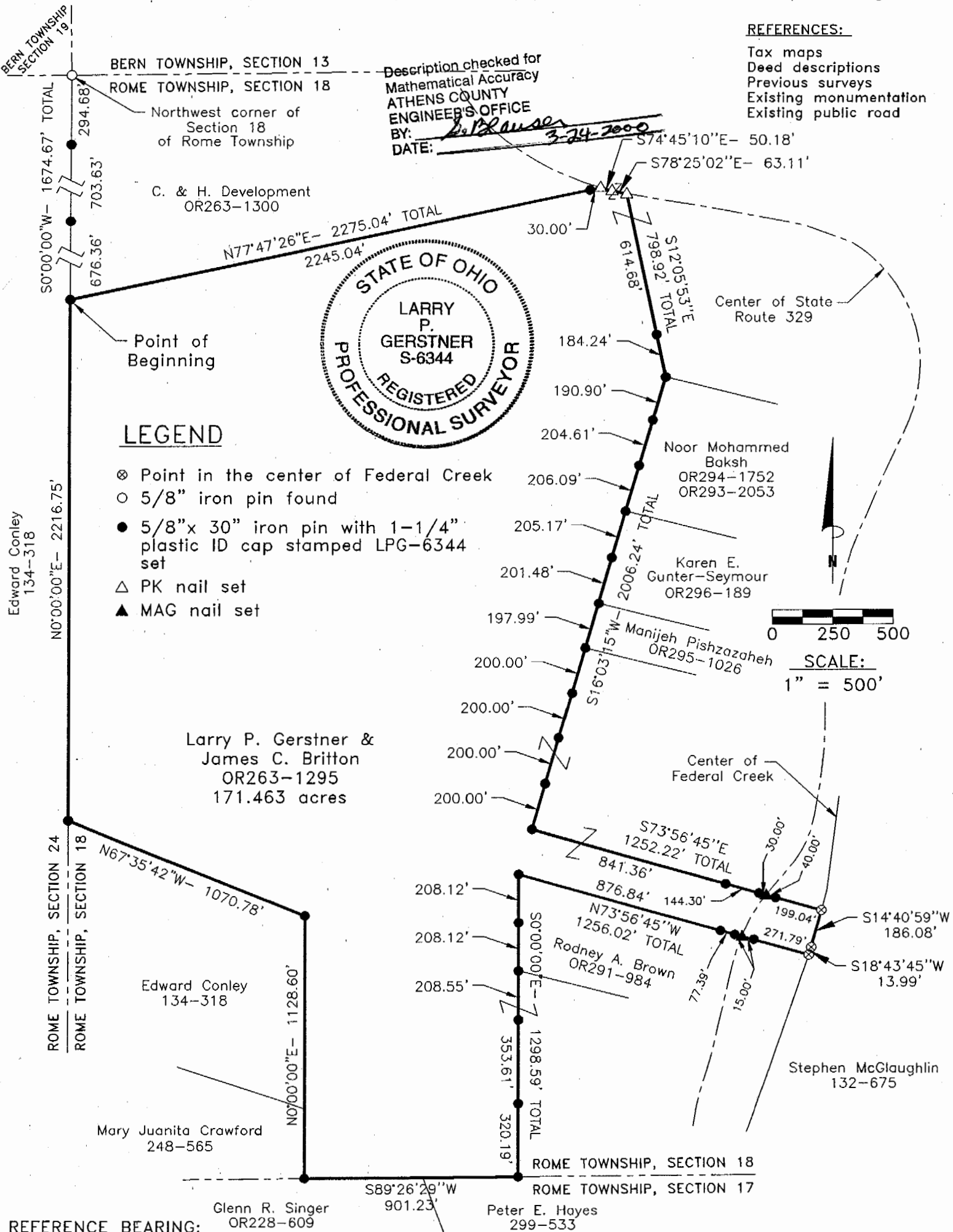
Description checked for
Mathematical Accuracy
ATHENS COUNTY
ENGINEER'S OFFICE
BY: *L.P. Gerstner*
DATE: *3-24-2000*



LEGEND

- ⊗ Point in the center of Federal Creek
- 5/8" iron pin found
- 5/8"x 30" iron pin with 1-1/4" plastic ID cap stamped LPG-6344 set
- △ PK nail set
- ▲ MAG nail set

Larry P. Gerstner &
James C. Britton
OR263-1295
171.463 acres



REFERENCE BEARING:

The West line of Section 18 as North 0 degrees 00 minutes 00 seconds East. Bearings are based upon an assumed meridian and are to denote angles only.

CERTIFICATION:

I hereby certify that an actual survey was made under my supervision of the premises shown hereon on the 22nd day of February, 1998, the 14th day of December, 1998, the 23rd day of September, 1999, the 18th day of October, 1999, and the 25th day of January, 2000 and that the plat is a correct representation of the premises as described by said survey.

Larry P. Gerstner
Registered Surveyor No. 6344

Survey by:

Larry P. Gerstner - Engineering and Surveying
9 East Second Street, Suite A, Logan, Ohio 43138
(740) 385-4260

000015