

**SURVEY DESCRIPTION OF A 25.000 ACRE TRACT FOR C. AND H. DEVELOPMENT**

Situated in Rome Township, Athens County, Ohio; being part of Section 18, Township 6, Range 12; and being more particularly described as follows:

Commencing for reference at a 5/8" iron pin found at the Northwest corner of said Section 18; thence with the West line of said Section 18 South 00 degrees 00 minutes 00 seconds East a distance of 998.32 feet to a 5/8" iron pin set and being the point of **Beginning** of the tract of land to be described;

thence leaving the West line of Section 18 North 83 degrees 46 minutes 11 seconds East a distance of 1668.08 feet to a PK nail set in the center of State Route 329 and passing a 5/8" iron pin set at a distance of 1638.08 feet;

thence with the center of State Route 329 the following ten bearings and distances:

- 1) South 35 degrees 05 minutes 42 seconds East a distance of 54.41 feet to a PK nail set;
- 2) South 39 degrees 58 minutes 22 seconds East a distance of 60.72 feet to a PK nail set;
- 3) South 45 degrees 30 minutes 22 seconds East a distance of 62.73 feet to a PK nail set;
- 4) South 50 degrees 46 minutes 17 seconds East a distance of 66.74 feet to a PK nail set;
- 5) South 54 degrees 47 minutes 03 seconds East a distance of 71.74 feet to a PK nail set;
- 6) South 58 degrees 45 minutes 16 seconds East a distance of 83.83 feet to a PK nail set;
- 7) South 61 degrees 38 minutes 20 seconds East a distance of 70.54 feet to a PK nail set;
- 8) South 65 degrees 31 minutes 40 seconds East a distance of 70.88 feet to a PK nail set;
- 9) South 68 degrees 49 minutes 42 seconds East a distance of 74.98 feet to a PK nail set;
- 10) South 71 degrees 21 minutes 59 seconds East a distance of 75.81 feet to a PK nail set;

thence leaving the center of State Route 329 South 77 degrees 47 minutes 26 seconds West a distance of 2275.04 feet to a 5/8" iron pin set on the West line of Section 18 and passing a 5/8" iron pin set at a distance of 30.00 feet;

thence with the West line of Section 18 North 0 degrees 00 minutes 00 seconds East a distance of 676.36 feet to the point of beginning, containing 25.000 acres more or less, and subject to the public easement of State Route 329 and any other public or private easements of record.

The above 25.000 acre survey is intended to describe part of the 324 acre tract as deeded to C & H Development, deed reference Volume 240, Page 234, Athens County Recorder's Office. This survey was based upon information obtained from tax maps, deed descriptions, previous surveys, existing monumentation, and an existing public road. The reference bearing for this survey is the West line of Section 18 as North 0 degrees 00 minutes 00 seconds East. Bearings are based upon an assumed meridian and are to denote angles only. All iron pins set by this survey are 5/8" by 30" and are capped by a 1-1/4" plastic identification cap stamped LPG-6344. The above described property was surveyed by Larry P. Gerstner, Ohio Registered Surveyor No. 6344, on February 22, 1998.



Description checked for  
Mathematical Accuracy  
ATHENS COUNTY  
ENGINEER'S OFFICE  
BY: S. Blauson  
DATE: 2-24-98

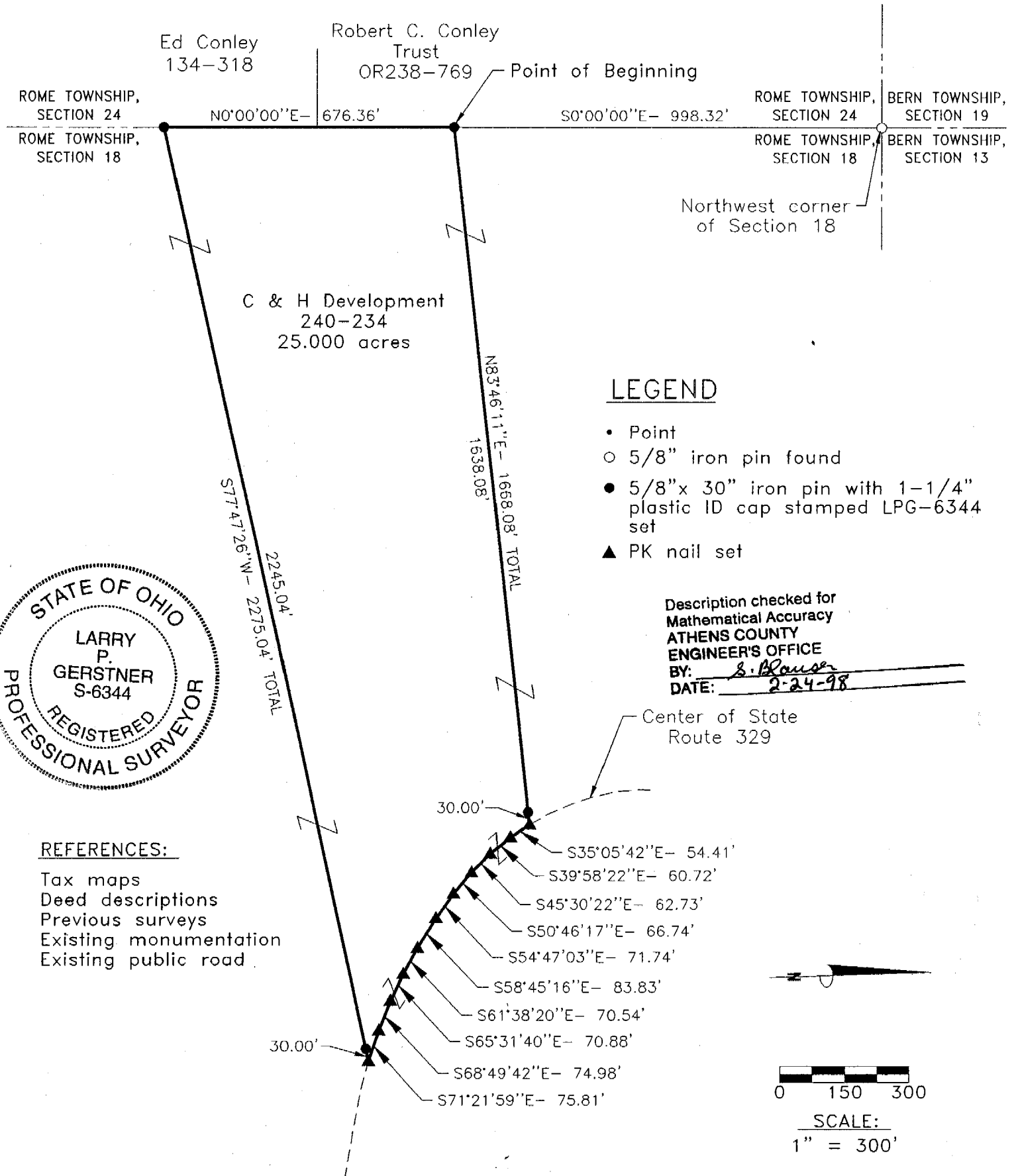
A handwritten signature in cursive script that reads "Larry P. Gerstner".

Survey by:  
Larry P. Gerstner - Engineering and Surveying  
9 East Second Street, Suite A, Logan, Ohio 43138 385-4260

22

PLAT OF A 25.000 ACRE TRACT FOR C. AND H. DEVELOPMENT

Situated in Rome Township, Athens County, Ohio; being part of Section 18, Township 6, Range 12.



**LEGEND**

- Point
- 5/8" iron pin found
- 5/8"x 30" iron pin with 1-1/4" plastic ID cap stamped LPG-6344 set
- ▲ PK nail set

Description checked for  
 Mathematical Accuracy  
 ATHENS COUNTY  
 ENGINEER'S OFFICE  
 BY: S. Blauer  
 DATE: 2-24-98

**REFERENCES:**

- Tax maps
- Deed descriptions
- Previous surveys
- Existing monumentation
- Existing public road

**REFERENCE BEARING:**

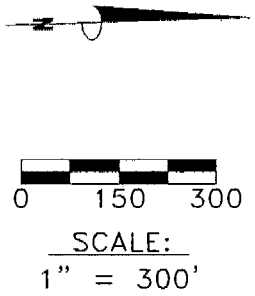
The West line of Section 18 as North 0 degrees 00 minutes 00 seconds East. Bearings are based upon an assumed meridian and are to denote angles only.

**CERTIFICATION:**

I hereby certify that an actual survey was made under my supervision of the premises shown hereon on the 22rd day of February, 1998 and that the plat is a correct representation of the premises as described by said survey.

Survey by: Larry P. Gerstner - Engineering and Surveying  
 9 East Second Street, Suite A, Logan, Ohio 43138  
 (614) 385-4260

Larry P. Gerstner  
 Registered Surveyor No. 6344



23  
 ROW #18