



ROBINSON SURVEYING

MEMBER-PROFESSIONAL LAND SURVEYORS OF OHIO
12355 LIARS CORNER ROAD, MILLFIELD, OHIO 45761

ALAN D. ROBINSON
Registered Land Surveyor

TELEPHONE
(740) 593-8774

DESCRIPTION OF A 27.085 ACRE TRACT

Situated in Section 25, Town 6, Range 12, Rome Township, Athens County, Ohio, and being a part of a tract described in Volume 207 Page 278 Official Records of Athens County and being more particularly described as follows:

Commencing at an iron pin found at the Southeast corner of Lot 30 in the Village of Guysville; thence South 2 degrees 28 minutes 14 seconds West, a distance of 375.70 feet to a point in the North Bank of the Hocking River, said point being the POINT OF BEGINNING of the following described tract;

thence, following said RiverBank, South 87 degrees 28 minutes 55 seconds East, a distance of 49.50 feet to an iron pin set; ✓

thence, leaving said River Bank following the East line of the Village of Guysville, North 2 degrees 27 minutes 59 seconds East, a distance of 401.31 feet to an iron pin found at the Southwest corner of a ✓ 1.704 acre tract described in Volume 218 Page 334 Official Records of Athens County;

thence, following said Tract, North 2 degrees 27 minutes 59 seconds East along said line, a distance of 104.36 feet to an iron pin found, said iron pin found being the point of curvature of a non-tangent curve, concave to the north, having a radius of 5679.58 feet, a central angle of 2 degrees 13 minutes 34 seconds, and a chord of 220.65 feet bearing North 74 degrees 37 minutes 54 seconds East;

thence east along said curve, a distance of 220.66 feet to an iron pin found; ✓

thence, leaving said tract, North 16 degrees 43 minutes 21 seconds West, a distance of 69.82 feet to ✓ a point in State Route 329, passing an iron pin set at 36.82 feet;

thence, following said State Route 329, North 66 degrees 56 minutes 31 seconds East, a distance of 386.19 feet to a point; ✓

thence North 65 degrees 58 minutes 44 seconds East, a distance of 147.83 feet to a point; ✓

thence, leaving said Road, South 24 degrees 13 minutes 01 second East, a distance of 108.28 feet to ✓ a point, passing an iron pin found at 23.49 feet, said point being the point of curvature of a non-tangent curve, concave to the north, having a radius of 5679.58 feet, a central angle of 0 degrees 30 minutes 16 seconds, and a chord of 50.00 feet bearing South 68 degrees 16 minutes 11 seconds West; ✓

thence west along said curve, a distance of 50.00 feet to an iron pin set at the North east corner of the aforementioned 1.704 acre tract;

thence, following said tract, South 22 degrees 36 minutes 38 seconds East, a distance of 100.02 feet ✓ to an iron pin found, said iron pin found being the point of curvature of a non-tangent curve, concave to the northwest, having a radius of 5779.58 feet, a central angle of 5 degrees 54 minutes 14 ✓ seconds, and a chord of 595.27 feet bearing North 65 degrees 32 minutes 55 seconds East; ✓

thence northeast along said curve, a distance of 595.53 feet to a point;

thence South 53 degrees 23 minutes 23 seconds East, a distance of 222.30 feet to a point in the ✓ Hocking River;

thence, following said River, North 89 degrees 17 minutes 02 seconds West, a distance of 275.49 ✓ feet;

thence South 62 degrees 04 minutes 16 seconds West, a distance of 323.48 feet; ✓

thence South 19 degrees 35 minutes 32 seconds West, a distance of 205.93 feet; ✓

thence South 21 degrees 31 minutes 05 seconds East, a distance of 520.73 feet; ✓

thence South 3 degrees 56 minutes 28 seconds West, a distance of 143.58 feet; ✓

thence South 87 degrees 58 minutes 02 seconds West, a distance of 130.95 feet; ✓

thence, leaving said River following the Old River bed, North 8 degrees 27 minutes 22 seconds West, ✓ a distance of 553.04 feet;

thence South 84 degrees 32 minutes 38 seconds West, a distance of 122.80 feet; ✓

thence South 82 degrees 32 minutes 38 seconds West, a distance of 330.00 feet; ✓

thence South 50 degrees 02 minutes 38 seconds West, a distance of 198.00 feet; ✓

thence South 0 degrees 02 minutes 38 seconds West, a distance of 66.00 feet; ✓

thence South 32 degrees 57 minutes 22 seconds East, a distance of 132.00 feet; ✓

thence South 26 degrees 42 minutes 22 seconds East, a distance of 121.28 feet to a point in the ✓ aforementioned Hocking River;

thence, South 26 degrees 42 minutes 22 seconds East along said line, a distance of 208.72 feet; ✓

thence South 8 degrees 32 minutes 38 seconds West, a distance of 214.50 feet; ✓

Room # 25

thence South 29 degrees 02 minutes 38 seconds West, a distance of 148.50 feet; ✓
thence South 61 degrees 32 minutes 38 seconds West, a distance of 198.00 feet; ✓
thence North 83 degrees 26 minutes 11 seconds West, a distance of 348.76 feet; ✓
thence North 34 degrees 14 minutes 35 seconds West, a distance of 978.22 feet to a point in the ✓
aforementioned Hocking River;
thence, leaving said Hocking River, North 2 degrees 27 minutes 59 seconds East, a distance of
127.58 feet to a point in the North bank of said River; ✓
thence, following said North bank of said River, South 73 degrees 50 minutes 17 seconds East, a
distance of 729.88 feet to the POINT OF BEGINNING; said described tract containing 27.085 acres ✓
(1,179,831.0647 square feet).
Excepting 1.695 acres (1.704 Acres Deed) described in the aforementioned 1.704-acre tract,
Containing 25.390 acres after said Exception.

Bearings are based previous Surveys and are used to denote angles only.
Subject to all easements and right-of-way of record.

All iron pins set are 5/8 inch by 30-inch long rebar with a yellow cap stamped Alan Robinson RLS
8049.

Alan D. Robinson P.S. 8049 bases the above description on a field Survey completed March 26,
2001,

Alan D. Robinson



Description checked for
Mathematical Accuracy
ATHENS COUNTY
ENGINEER'S OFFICE
BY: *S. Blausen*
DATE: *3-26-01*



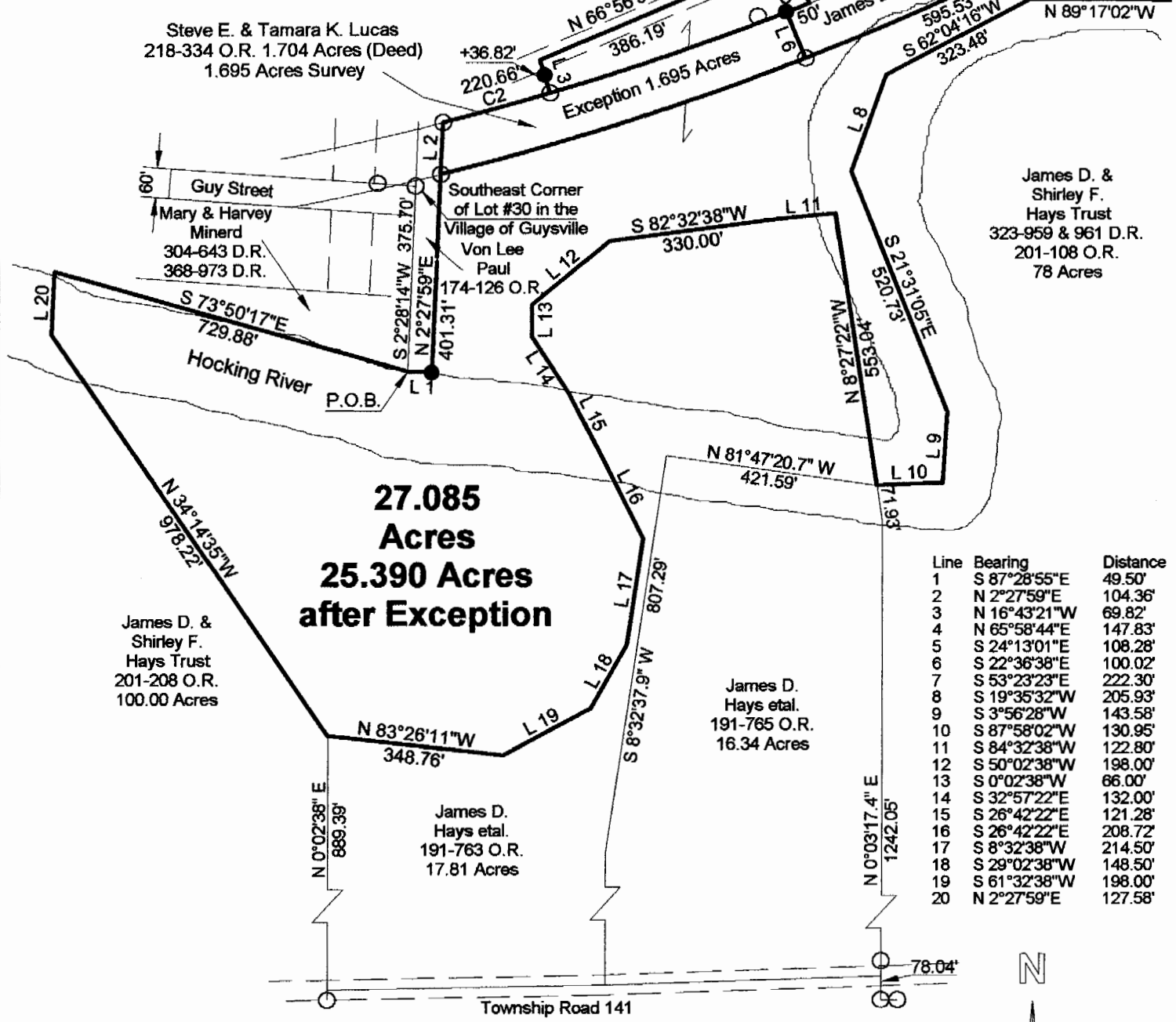
ROBINSON SURVEYING

Darin M. & Kellie L. Hayden
207-278 O.R.

Darin M. & Kellie L. hayden
266-1136 O.R.
5.56 Ac.

12355 Liars Corner Rd.
Millfield, Ohio 45761
(740) 593-8774
1-800-296-9984

Curve	Delta Angle	Radius	Arc	Tangent	Chord	Chord Bearing
1	5°30'04"	5679.56	545.32	272.87	545.11	S 70°45'58" W
2	2°13'34"	5679.58	220.66	110.35	220.65	N 74°37'54" E
3	0°30'16"	5679.58	50.00	25.00	50.00	S 68°16'11" W
4	5°54'14"	5779.58	595.53	298.03	595.27	N 65°32'55" E



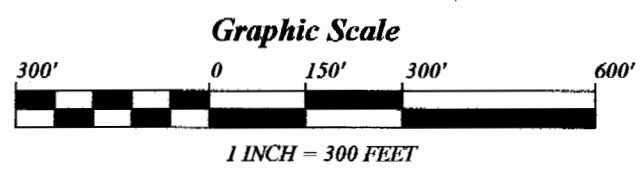
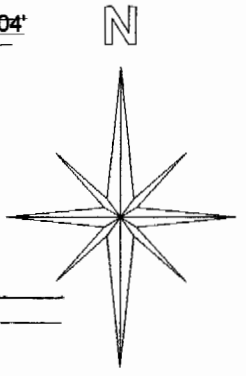
Line	Bearing	Distance
1	S 87°28'55"E	49.50'
2	N 2°27'59"E	104.36'
3	N 16°43'21"W	69.82'
4	N 65°58'44"E	147.83'
5	S 24°13'01"E	108.28'
6	S 22°36'38"E	100.02'
7	S 53°23'23"E	222.30'
8	S 19°35'32"W	205.93'
9	S 3°56'28"W	143.58'
10	S 87°58'02"W	130.95'
11	S 84°32'38"W	122.80'
12	S 50°02'38"W	198.00'
13	S 0°02'38"W	66.00'
14	S 32°57'22"E	132.00'
15	S 26°42'22"E	121.28'
16	S 26°42'22"E	208.72'
17	S 8°32'38"W	214.50'
18	S 29°02'38"W	148.50'
19	S 61°32'38"W	198.00'
20	N 2°27'59"E	127.58'

- = Iron Pin Set W/A Yellow Cap
Stamped Alan Robinson RLS 8049
- = Iron Pin Found
- △ = Rail Road Spike Set
- ▲ = Rail Road Spike found
- ☒ = Stone Found
- M = Measured
- D = Deed
- C = Calculated

BEARING REFERENCE
BASED ON PREVIOUS SURVEYS AND
ARE USED TO DENOTE ANGLES ONLY

References
Deeds as Noted
Previous Surveys
Current Tax Plats
Existing Monumentation

Description checked for
Mathematical Accuracy
ATHENS COUNTY
ENGINEER'S OFFICE
BY: *S. Blausen*
DATE: *3-26-01*



Plat of Survey of 27.085 Acre Tract 25.390 Acre Tract after Exception
 Surveyed for: James Hays Date 03/26/2001
 Subdivision:-----
 Section 25, Town 6, Range 12, Rome Township
 Athens County, State of Ohio
 Alan D. Robinson Registered Professional Land Surveyor No. 8049
Alan D. Robinson

