



SOUTHEASTERN LAND SURVEYS

LEONARD F. SWOYER
REGISTERED PROFESSIONAL LAND SURVEYOR

3428 Pleasant Hill Road
Athens, Ohio 45701
614/593-8701

Situated in the south half of Section 26, Town 6, Range 12, Rome Township, Athens County, Ohio and described as follows:

Commencing at the northeast corner of the southeast quarter of said Section 26; thence on an assumed bearing of North 86 degrees 59 minutes 12 seconds West, a distance of 858.66 feet (deed 292-115 Athens County Deed Records) to a point, the northeast corner of a 45.31 acre tract described in Volume 292 Page 115 of the Athens County Deed Records; thence along the east line of said 45.31 acre tract South 27 degrees 28 minutes 55 seconds West, a distance of 141.95 feet to a set iron pin, THE TRUE POINT OF BEGINNING; thence leaving the said east line South 19 degrees 57 minutes 29 seconds East, a distance of 186.81 feet to a set iron pin; thence North 65 degrees 48 minutes 11 seconds East, a distance of 267.71 feet to a set iron pin; thence South 66 degrees 50 minutes 34 seconds East, a distance of 417.18 feet to a set iron pin; thence South 60 degrees 57 minutes 14 seconds East, a distance of 378.19 feet to a set iron pin; thence South 85 degrees 24 minutes 35 seconds East, a distance of 148.92 feet to a set iron pin; thence North 87 degrees 07 minutes 57 seconds East, a distance of 9.76 feet to a point in the center of Rome Township Road 226; thence along the center of said Rome Township Road 226 the following six courses and distances 1. South 3 degrees 50 minutes 02 seconds East, a distance of 40.31 feet to a point; thence 2. South 3 degrees 05 minutes 46 seconds West, a distance of 69.80 feet to a point; thence 3. South 6 degrees 34 minutes 31 seconds West, a distance of 129.70 feet to a point; thence 4. South 8 degrees 51 minutes 56 seconds West, a distance of 65.51 feet to a point; thence 5. South 9 degrees 17 minutes 56 seconds West, a distance of 30.64 feet to a point; thence 6. South 10 degrees 35 minutes 31 seconds West, a distance of 40.02 feet to a point; thence leaving the said Rome Township Road 226 and along the north line of a 4.82 acre tract described in Volume 106 Page 795 of the Athens County Official Deed Records and the north line a 11.60 acre tract described in Volume 75 Page 263 of the Athens County Official Deed Records North 85 degrees 55 minutes 47 seconds West, (passing a set iron pin at 66.43 feet and a found

87

LOT 16

iron pin at 343.26 feet) for a total distance of 574.32 feet to a found iron pin at the northwest corner of said 11.60 acre tract; thence along the north line of a 28.35 acre tract described in Volume 221 Page 285 North 57 degrees 50 minutes 46 seconds West, a distance of 857.22 feet to a found stone at the northwest corner of said 28.35 acre tract; thence along the east property line of the aforementioned 45.31 acre tract North 27 degrees 28 minutes 55 seconds East, a distance of 339.36 feet to the point of beginning and containing 13.0254 acres, and being a part of tract XVII in Volume 382 Page 433 of the Athens County Deed Records.

Note: Unless otherwise noted, all set iron pins are 5/8 inch diameter rebar and 30 inches in length and capped with a plastic identification marker inscribed L.F. Swoyer R.L.S. 6765.

The above description was prepared under the supervision of Leonard F. Swoyer Professional Land Surveyor Number 6765 and based on a survey performed by Southeastern Land Surveys dated December 6, 1995.

Subject to all easements and right of ways of record.

Description checked for
Mathematical Accuracy
ATHENS COUNTY
ENGINEER'S OFFICE
BY: S. Blauw
DATE: 12-8-95

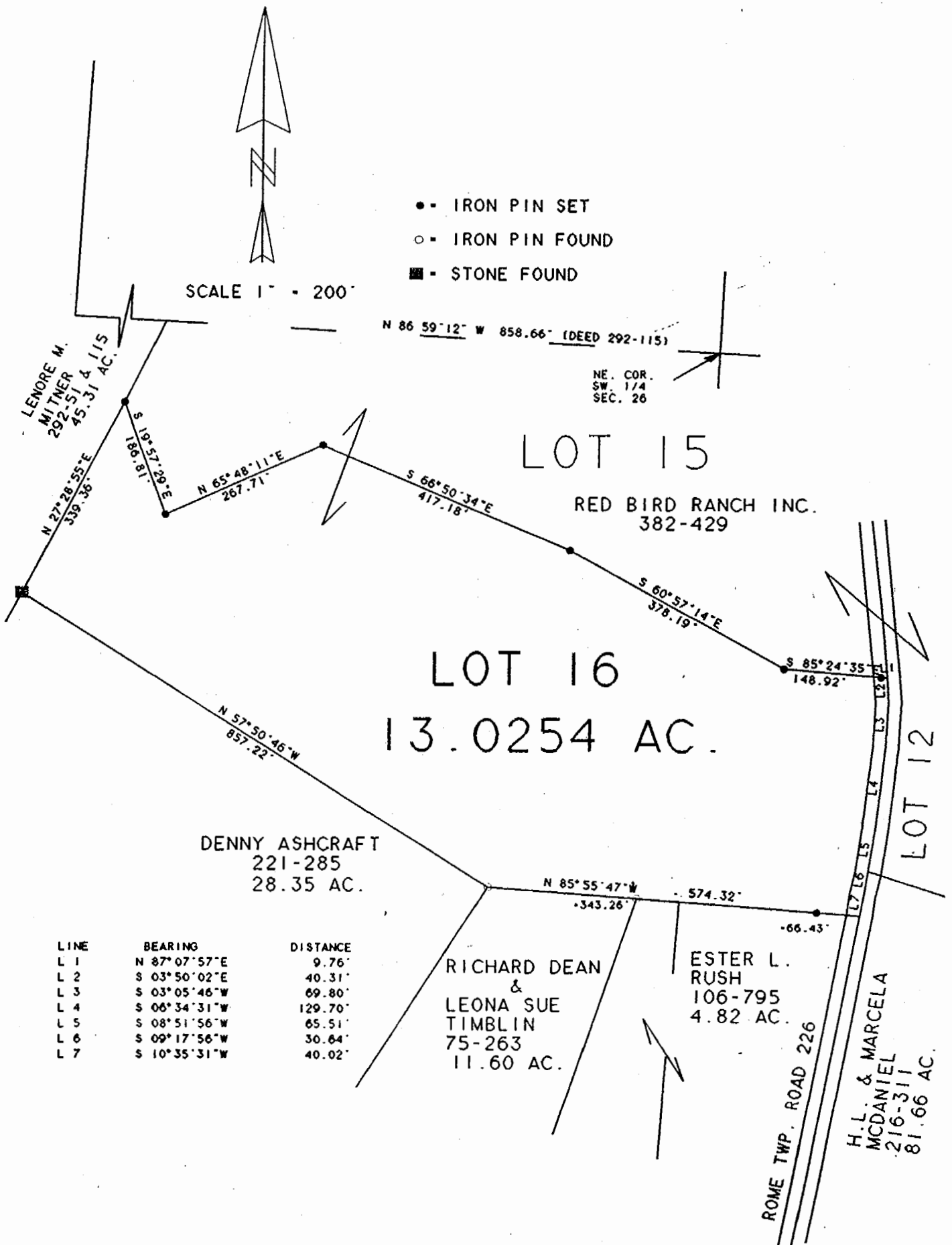
88



SOUTHEASTERN LAND SURVEYS

LEONARD F. SWOYER
REGISTERED PROFESSIONAL LAND SURVEYOR

3428 Pleasant Hill Road
Athens, Ohio 45701
614/593-8701



Plat of 13.0254 Ac. Scale 1" = 200'

Surveyed for RED BIRD RANCH Date DEC. 6, 1995

Subdivision south half

Township Rome Section 26 Town 6 Range 12

County Athens State Oh.

Leonard F. Swoyer Jr.
Leonard F. Swoyer Jr. Reg. Prof. Land Surveyor No. 6765

89
ROM #26