



SOUTHEASTERN LAND SURVEYS

LEONARD F. SWOYER
REGISTERED PROFESSIONAL LAND SURVEYOR

3428 Pleasant Hill Road
Athens, Ohio 45701
614/593-8701

Situated in the south half of Fraction 33 Section 27, Town 6, Range 12, Rome Township, Athens County, Ohio and described as follows:

Commencing at a found stone at the southwest corner of said Section 27, **THE TRUE POINT OF BEGINNING**; thence on an assumed bearing along the west line of said Section 27 North 4 degrees 01 minute 37 seconds East, a distance of 1160.40 feet to a set iron pin; thence leaving the westline of said Section 27 South 85 degrees 58 minutes 23 seconds East (passing a set iron pin at 808.41 feet) for a total distance of 828.41 feet to a point in the center of Rome Township Road 226; thence along the center of said Rome Township 226 the following sixteen bearings and distances 1. South 2 degrees 47 minutes 54 seconds West, a distance of 10.49 feet to a point; thence 2. South 6 degrees 34 minutes 28 seconds West, a distance of 160.89 feet to a point; thence 3. South 16 degrees 43 minutes 22 seconds West, a distance of 62.54 feet to a point; thence 4. South 20 degrees 37 minutes 40 seconds West, a distance of 80.52 feet to a point; thence 5. South 25 degrees 02 minutes 16 seconds West, a distance of 24.61 feet to a point; thence 6. South 25 degrees 02 minutes 15 seconds West, a distance of 104.10 feet to a point; thence 7. South 30 degrees 37 minutes 15 seconds West, a distance of 132.02 feet to a point; thence 8. South 37 degrees 16 minutes 08 seconds West, a distance of 113.01 feet to a point; thence 9. South 52 degrees 06 minutes 48 seconds West, a distance of 48.40 feet to a point; thence 10. South 54 degrees 05 minutes 42 seconds West, a distance of 54.93 feet to a point; thence 11. South 43 degrees 57 minutes 43 seconds West, a distance of 58.57 feet to a point; thence 12. South 29 degrees 50 minutes 42 seconds West, a distance of 30.98 feet to a point; thence 13. South 31 degrees 55 minutes 00 seconds West, a distance of 120.44 feet to a point; thence 14. South 27 degrees 39 minutes 38 seconds West, a distance of 73.77 feet to a point; thence 15. South 23 degrees 11 minutes 14 seconds West, a distance of 102.66 feet to a point; thence 16. South 18 degrees 53 minutes 26 seconds West, a distance of 123.86 feet to a point; thence leaving the center of said Rome Township Road 226 and along the north property line of a 28.48 acre tract described

Description checked for
Mathematical Accuracy
ATHENS COUNTY
ENGINEER'S OFFICE
BY: S. Blouse
DATE: 12-8-95

PROPERTY

CONSTRUCTION

SUBDIVISIONS

75

LOT 1

in Volume 373 Page 471 of the Athens County Deed Records North 83 degrees 47 minutes 28 seconds West (passing a set iron pin at 15.00 feet) for a total distance of 337.18 feet to the point of beginning and containing 16.5275 acres, and being a part of tract XV described in Volume 383 Page 433 of the Athens County Deed Records.

Note: Unless otherwise noted, all set iron pins are 5/8 inch diameter rebar and 30 inches in length and capped with a plastic identification marker inscribed L.F. Swoyer R.L.S. 6765.

The above description was prepared under the supervision of Leonard F. Swoyer Professional Land Surveyor Number 6765 and based on a survey performed by Southeastern Land Surveys dated December 6, 1995.

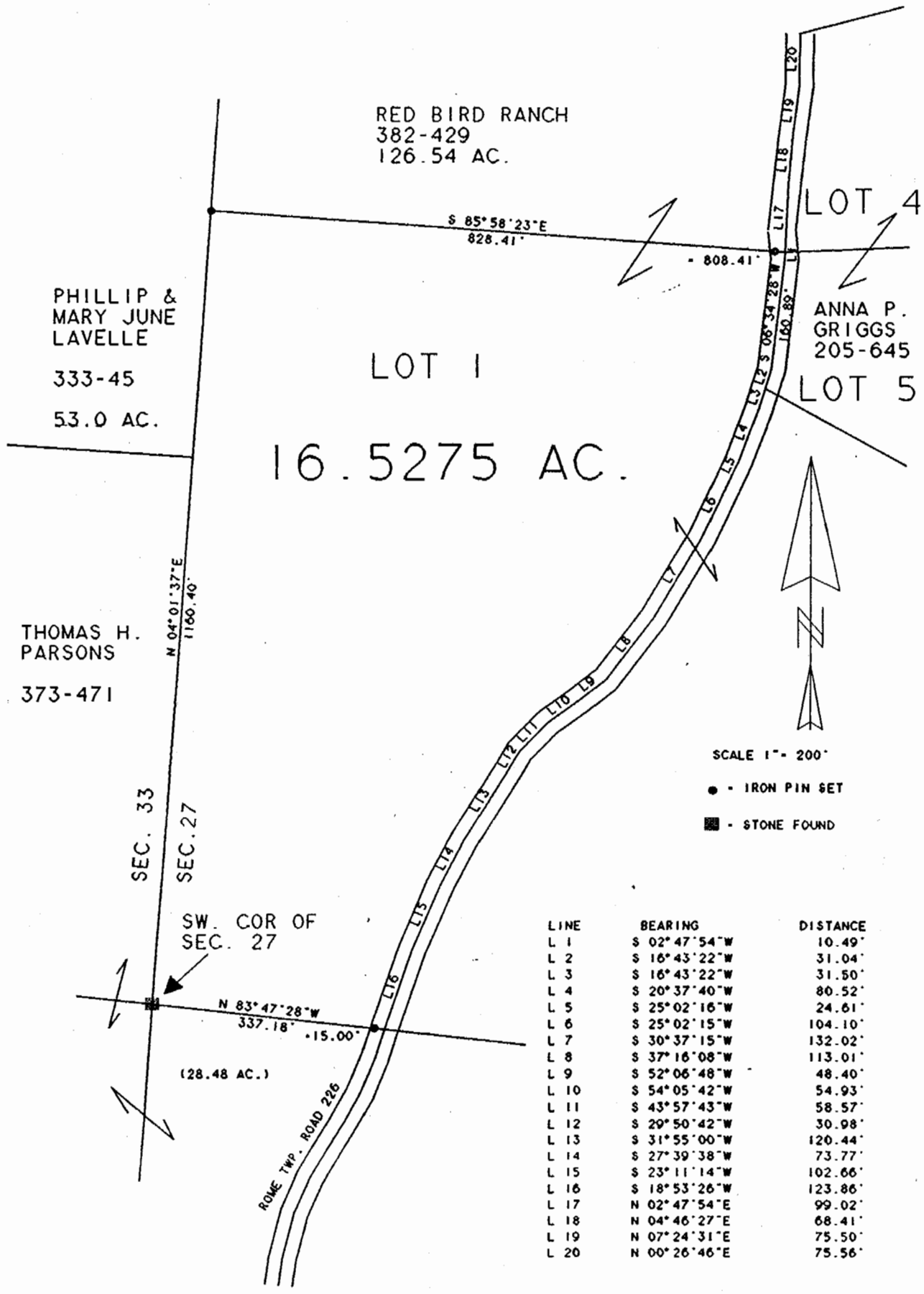
Subject to all easements and right of ways of record.



SOUTHEASTERN LAND SURVEYS

LEONARD F. SWOYER
REGISTERED PROFESSIONAL LAND SURVEYOR

3428 Pleasant Hill Road
Athens, Ohio 45701
614/593-8701



Plat of 16.5275 Acres Scale 1" = 200'
 Surveyed for REDBIRD RANCH INC. Date DEC. 6, 1995
 Subdivision SOUTH HALF OF FRACTION 33
 Township ROME Section 27 Town 6 Range 12
 Corporation ----- County ATHENS State OHIO

Leonard F. Swoyer Jr.
 Leonard F. Swoyer Jr. Reg. Prof. Land Surveyor No. 6765

77

ROM # 27