

Branner Surveying

**12500 N. Peach Ridge
Athens, Ohio**

Situated in Section 30, T.6, R.12, Rome Township, Athens County, Ohio and being more particularly described as follows:

Beginning at a the South-east corner of a 5.110 acre tract (254-704) and being in County Road 84, said point bears South 30 degrees 06 minutes 17 seconds West, 1191.84 feet from the North-east corner of Section 30;

Thence, along said road, South 24 degrees 56 minutes 52 seconds West, a distance of 97.21 feet to a point,

Thence, South 22 degrees 53 minutes 22 seconds West, a distance of 207.69 feet to a point,

Thence, South 13 degrees 41 minutes 24 seconds West, a distance 111.58 feet to a point,

Thence, South 9 degrees 20 minutes 22 seconds West, a distance of 197.32 feet to a point,

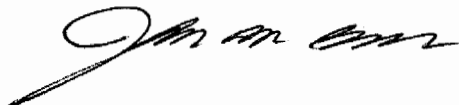
Thence, leaving said road, North 82 degrees 56 minutes 20 seconds West, a distance of 138.01 feet to a iron pin set, passing an iron pin set at 36.44 feet,

Thence, North 11 degrees 33 minutes 44 seconds West, a distance of 360.26 feet to an iron pin set, .

Thence, North 0 degrees 9 minutes 9 seconds West, a distance of 246.47 feet to an iron pin set,

Thence, South 85 degrees 2 minutes 53 seconds East, a distance of 391.50 feet to the point of beginning, passing an iron pin found at 360.68 feet and containing 3.544 acres. Subject to all easements and rights of way.

Based on a field survey completed August 2003, by John M. Branner, P.S. 6508.



Description checked for
Mathematical Accuracy
ATHENS COUNTY
ENGINEER'S OFFICE
BY: S. Blause
DATE: 8-12-03

Rom # 30

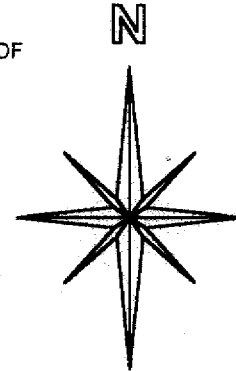
JONATHAN HUNT
5.110 AC.
254-704

S 85°02'53"E
391.50'

+360.68'

○ +20.5'

P.O.B. BEARS
S 30°06'17" W
1191.84'
FROM N.E. COR OF
SECTION 30



SCALE 1 INCH = 100 FEET

● = IRON PIN SET
○ = IRON PIN FOUND

N 0°09'09"W
246.47'

3.544 Acres

S 22°53'22"W
207.69'

C.R. 84 FELTON ROAD

S 13°41'24"W
111.58'

S 9°20'22"W
197.32'

N 11°33'44"W
360.26'

N 82°56'20"W
138.01'
+36.44'

RON FAUBER
276-1281

SURVEY OF A 3.544 ACRE TRACT
IN SECTION 30, T.6, R.12,
ROME TOWNSHIP
ATHENS COUNTY, OHIO
SURVEYED AUGUST 2003

BY: 
JOHN M. BRANNER P.S. 6805
12500 N. PEACH RIDGE ROAD
ATHENS, OHIO 45701
(740) 592-5778



Description checked for
Mathematical Accuracy
ATHENS COUNTY
ENGINEER'S OFFICE
BY: S. Blaylock
DATE: 8-17-03

Branner Surveying

**12500 N. Peach Ridge
Athens, Ohio**

Situated in Section 30, T.6, R.12, Rome Township, Athens County, Ohio and being more particularly described as follows:

Beginning at a point where Grantor's South-line intersects County Road 84, said point bears from the northeast corner of Section 30, South 24 degrees 11 minutes 52 seconds West, a distance 2176.32 feet.

Thence, leaving said road, South 50 degrees 35 minutes 34 seconds West, a distance of 258.31 feet to an iron pin set, passing an iron pin set at 103.38 feet,

Thence, North 66 degrees 14 minutes 1 second West, a distance of 128.83 feet to an iron pin set,

Thence, North 20 degrees 49 minutes 43 seconds East, a distance 364.04 feet to an iron pin set,

Thence, South 77 degrees 6 minutes 29 seconds East, a distance of 258.64 feet to a point in County Road 84, passing an iron pin set at 229.50 feet,

Thence, along said road, South 20 degrees 35 minutes 58 seconds West, a distance of 182.12 feet to the point of beginning and containing 1.950 acres.

Subject to all easements and rights of way.

Based on a field survey completed August 2003, by John M. Branner, P.S. 6508.

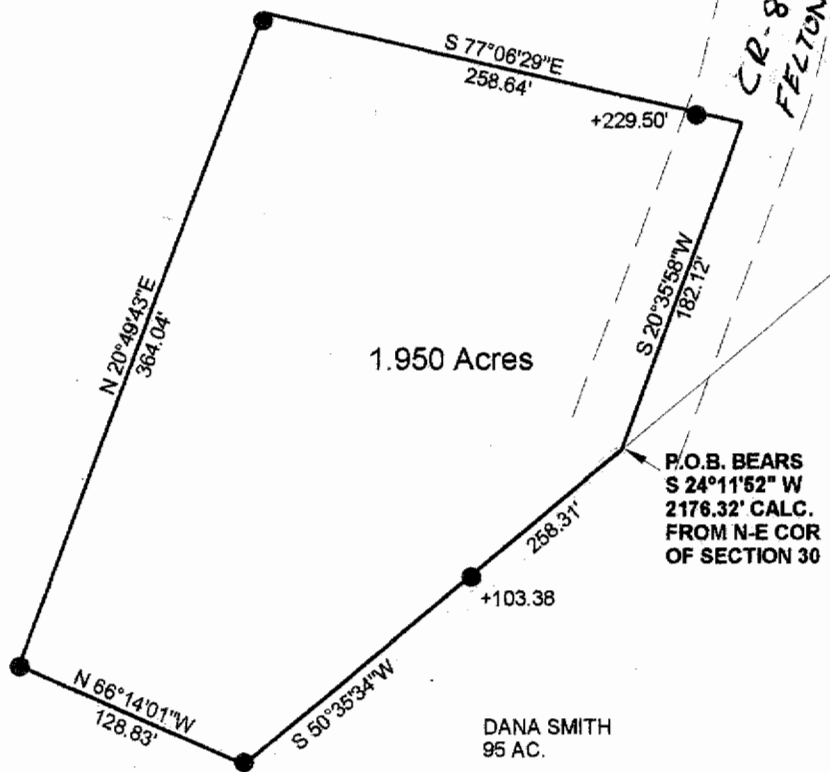


Description checked for
Mathematical Accuracy
ATHENS COUNTY
ENGINEER'S OFFICE
BY: S. Blausen
DATE: 8-12-03

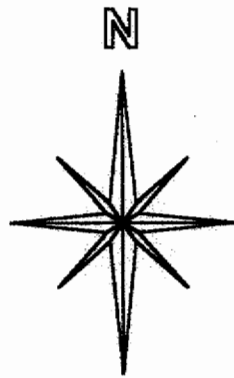
Rom # 30

RON FAUBER
276-1281

4.9441 AC.



CR-84
FELTON RD.



SCALE 1 INCH = 100 FEET
● = IRON PIN SET
○ = IRON PIN FOUND

SURVEY OF A 1.950 ACRE TRACT
IN SECTION 30, T.6, R.12,
ROME TOWNSHIP
ATHENS COUNTY, OHIO
SURVEYED AUGUST 2003

Description checked for
Mathematical Accuracy
ATHENS COUNTY
ENGINEER'S OFFICE
BY:
DATE:

S. Blausen
8-12-03

BY: *John M. Branner*
JOHN M. BRANNER P.S. 6805
12500 N. PEACH RIDGE ROAD
ATHENS, OHIO 45701
(740) 592-5778

