

VERNON

VERNON SURVEYING CO. PROFESSIONAL SURVEYORS

November 24, 1998
98-4347

Legal Description
60.1669 Acres
To Be Conveyed To
Ellen Grambling

Situated in the State of Ohio, Athens County, Rome Township, and being part of Section 31, Town 6N, Range 11W, more particularly described as follows:

Commencing for reference and beginning at an iron pin found at the northeast corner of Section 31; thence with the easterly line of Section 31 S 00-07-19 W a distance of 618.49 feet to the centerline of Athens Township Road 574, and passing an iron pin found 590.20 feet distant; thence with the centerline of Athens Township Road 574 the following twelve (12) courses:

thence N 85-01-16 W a distance of 283.83 feet to a point;
thence N 89-30-37 W a distance of 197.46 feet to a point;
thence S 63-06-38 W a distance of 400.83 feet to a point;
thence S 45-01-22 W a distance of 182.00 feet to a point;
thence S 32-02-14 W a distance of 174.51 feet to a point;
thence S 50-23-43 W a distance of 165.23 feet to a point;
thence S 64-19-49 W a distance of 192.65 feet to a point;
thence S 84-40-18 W a distance of 213.39 feet to a point;
thence S 64-03-43 W a distance of 260.47 feet to a point;
thence S 47-44-42 W a distance of 459.83 feet to a point;
thence S 29-46-21 W a distance of 145.13 feet to a point;
thence S 21-30-12 W a distance of 107.13 feet to a point;

Description checked for
Mathematical Accuracy
ATHENS COUNTY
ENGINEER'S OFFICE
BY: *S. Blanton*
DATE: *12-21-98*

thence leaving the centerline of Athens Township Road 574 N 89-59-16 W a total distance of 131.45 feet to an iron pin found, and passing an iron pin set at 11.33 feet distant; thence N 00-03-27 E a distance of 1907.89 feet to an iron pin set in the northerly line of Section 31, and passing an iron pin set at 1684.85 feet distant; thence with the northerly line of Section 31 S 89-59-16 E a distance of 2389.20 feet, and passing an iron pin set at 403.58 feet distant, to the place of beginning, containing 60.1669 acres, more or less, but subject to all legal highways, rights-of-way, easements, and restrictions of record.

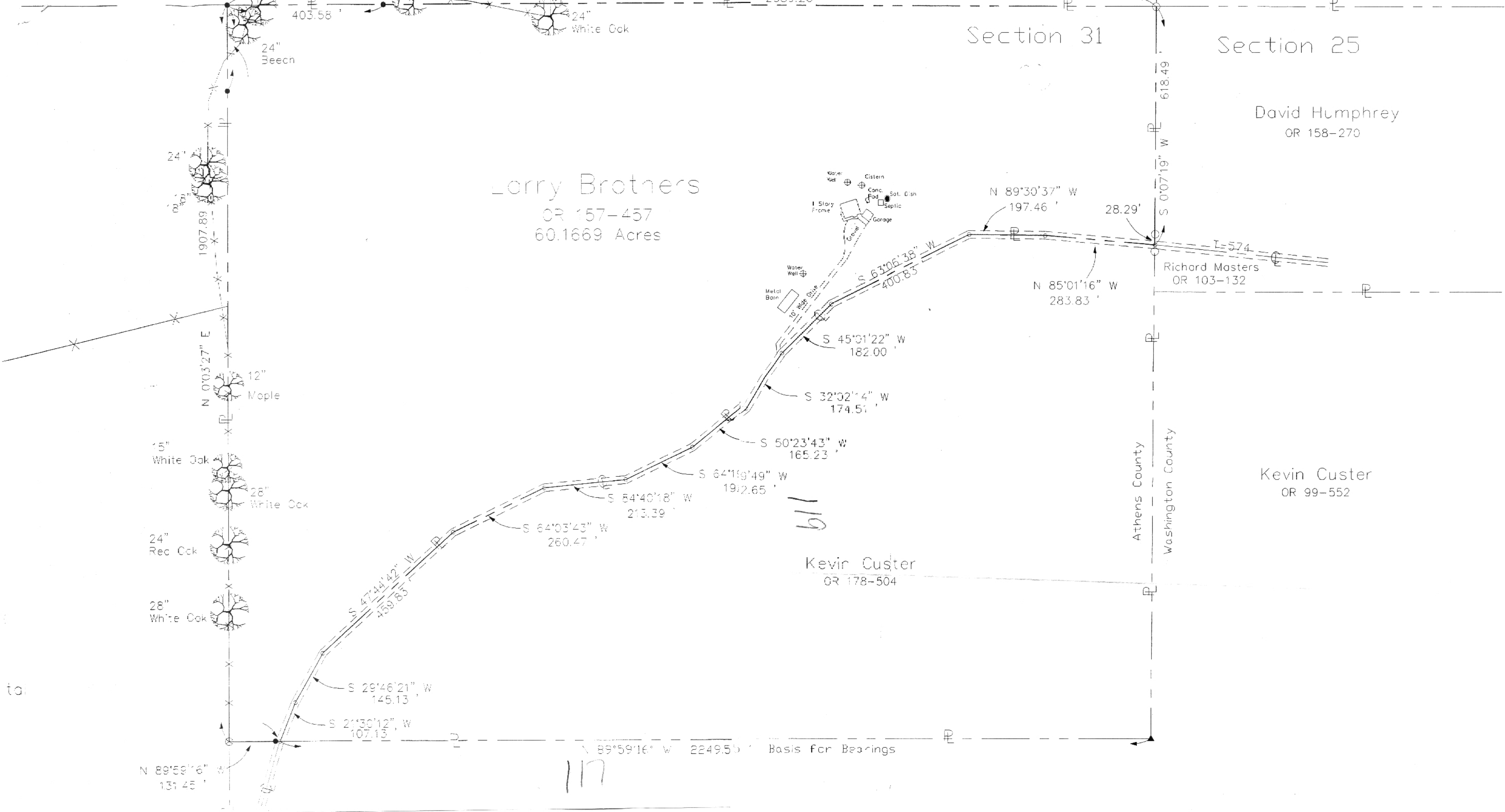
112
Rom # 31

VERNON

VERNON SURVEYING CO. PROFESSIONAL SURVEYORS

North is based on an assumed meridian and all bearings shown are used to denote horizontal angles only. All iron pins set are 5/8-inch by 34-inch length rebar with a plastic cap stamped "Vernon OH6282 WV550."

This legal description was prepared by Robert G. Vernon, Professional Surveyor No. OH6282, WV 550, based on field surveys in November, 1998.



120
H. W. Wagon

12/2/98

POST OFFICE BOX 741
MARIETTA, OH 45750
TELEPHONE (740) 373-8397
FAX (740) 373-8266