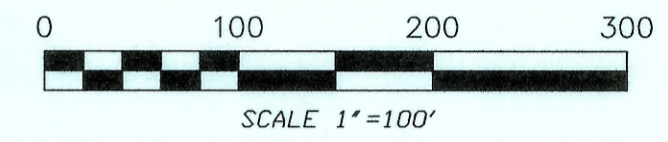
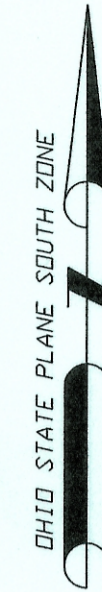


Description Checked for
Mathematical Accuracy
Athens County
ENGINEER'S OFFICE
BY: *Brandt McMillan*
DATE: 9/15/16



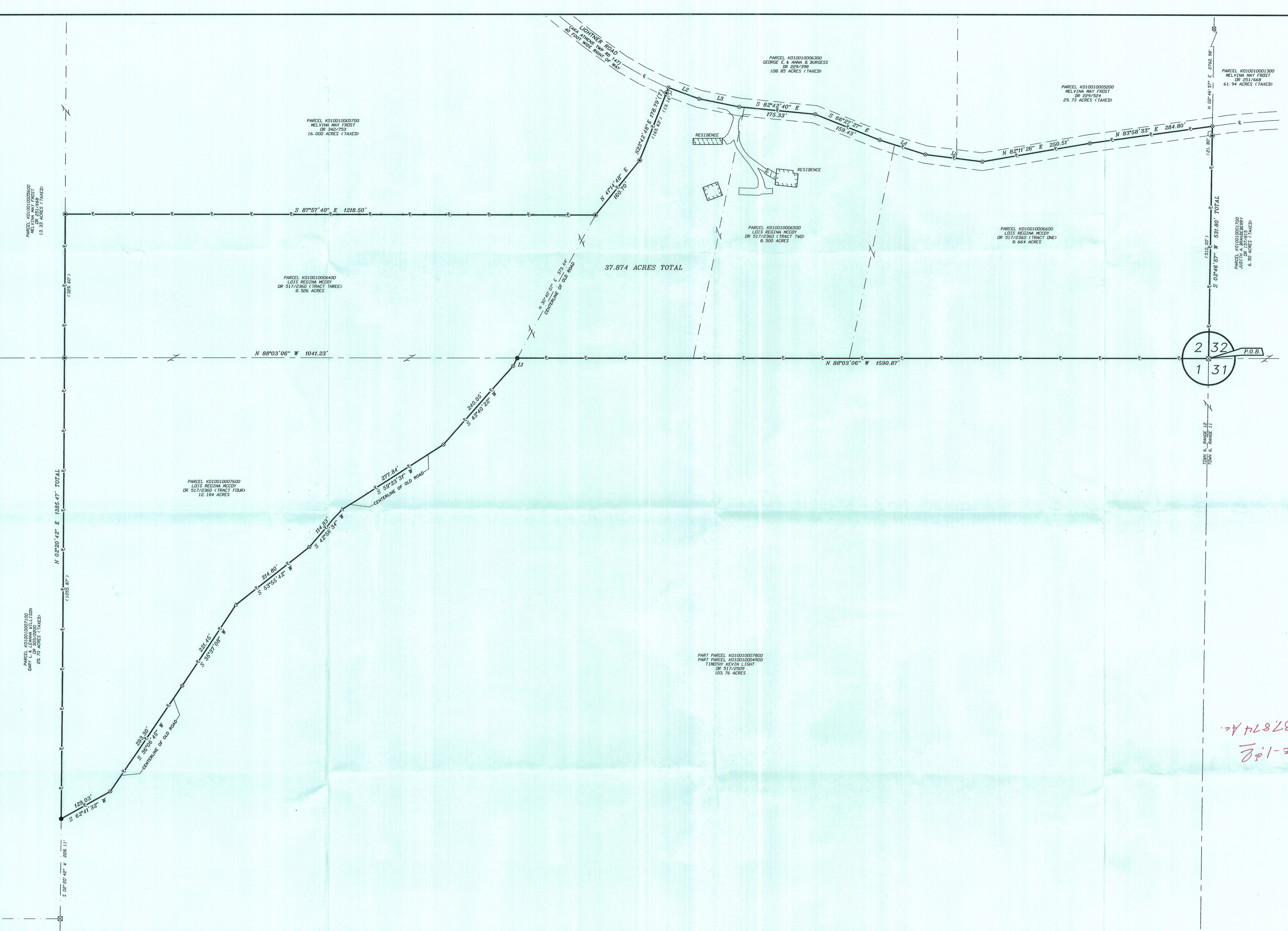
LEGEND
THESE SYMBOLS AND LINES MAY BE FOUND IN THE DRAWING:

●	SET 5/8" CAPPED REBAR
⊠	FOUND MARKED STONE
△	FOUND NAIL
●	FOUND ROD
○	POINT
—	PROPERTY LINE
- - -	RIGHT OF WAY
- - -	SECTION LINE
- - -	ADJOINER LINE
- - -	BARBED WIRE FENCE
- - -	RUN/DITCH
	STRUCTURE

LINE	BEARING	DISTANCE
L1	S 50°47'56" W	20.72'
L2	S 67°55'26" E	74.94'
L3	S 76°53'31" E	94.94'
L4	S 20°39'35" E	110.11'
L5	S 80°58'37" E	131.67'

REFERENCES:
BEING A PART OF THE NE 1/4 OF SECTION 1, TOWN 6, RANGE 12 & A PART OF THE SE 1/4 OF SECTION 2, TOWN 6, RANGE 12 ROME TOWNSHIP, ATHENS COUNTY, OHIO
OFFICIAL RECORD: 517, PAGE: 2360
OFFICIAL RECORD: 194, PAGE: 676
OFFICIAL RECORD: 194, PAGE: 674
OFFICIAL RECORD: 517, PAGE: 2360
DEED RECORD: 117, PAGE: 371
PLATS ON RECORD IN THE FILES OF THE ATHENS COUNTY, OHIO, ENGINEER'S OFFICE:
ROME TOWNSHIP TAX PARCELS:
PCL: K010010006400-(8.526 AC)
PCL: K010010006500-(8.500 AC)
PCL: K010010006600-(8.664 AC)
PCL: K010010007600-(12.184 AC)

37874 AC. (PC) ST
Route 11E



PROJECT INFORMATION	REVISIONS:
DRAWN BY: RRC II	1.
CHECKED BY: WBS, RRC II	2.
PROJECT: #2166609	3.
DATE: 7/22/2016	4.



PICKERING ASSOCIATES
11283 EMERSON AVENUE, PARKERSBURG, WV 26104
(304) 464-5305 PICKERING USA.COM
Architects • Engineers • Surveyors

PART OF SECTIONS 1 AND 2, TOWN 6, RANGE 12
ROME TOWNSHIP
ATHENS COUNTY, OHIO

BOUNDARY SURVEY PLAT
37.874 ACRES

BOUNDARY SURVEY

SHEET NUMBER
51