

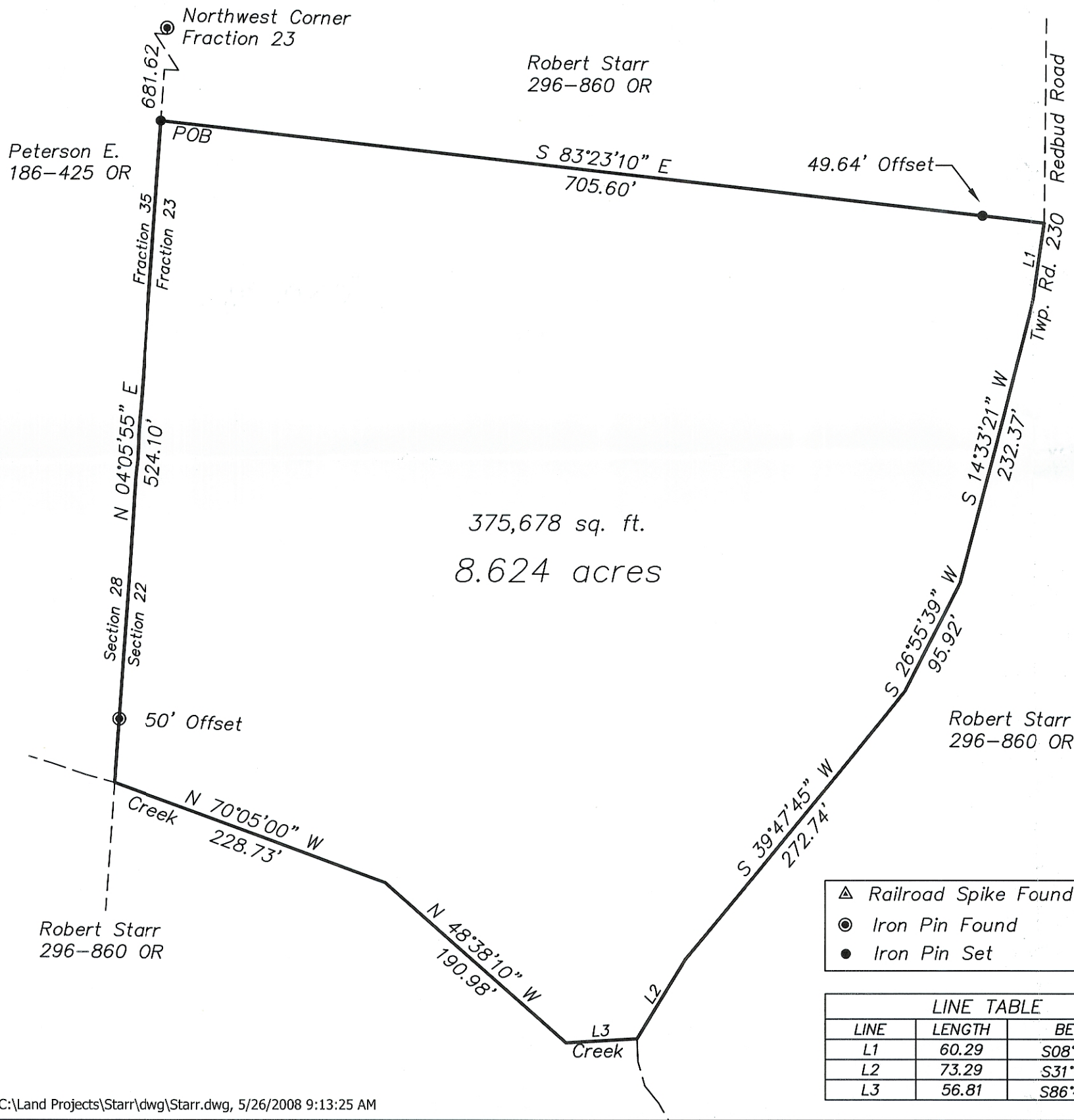
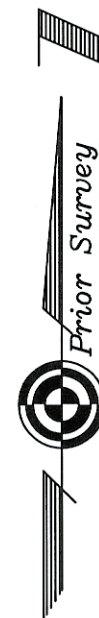
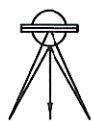
C. TIM NEWMAN
Professional Surveyor

66 Elmwood Place
Athens, Ohio 45701

740-594-1884
FAX 740-594-9413

Member of Professional
Land Surveyors of Ohio

Land Surveys, Subdivisions



375,678 sq. ft.
8.624 acres

Plat of Survey of 8.624 Acres
Situating in Fraction 23, Section 22,
Town 6, Range 12, Rome Township,
Athens County, Ohio
Surveyed for: Bob Starr

Charles T. Newman
Charles T. Newman



Description Checked for
Mathematical Accuracy
Athens County
ENGINEER'S OFFICE
BY: *[Signature]*
DATE: 5/27/08

- ▲ Railroad Spike Found
- Iron Pin Found
- Iron Pin Set

LINE TABLE		
LINE	LENGTH	BEARING
L1	60.29	S08°30'11"W
L2	73.29	S31°10'42"W
L3	56.81	S86°40'35"W

