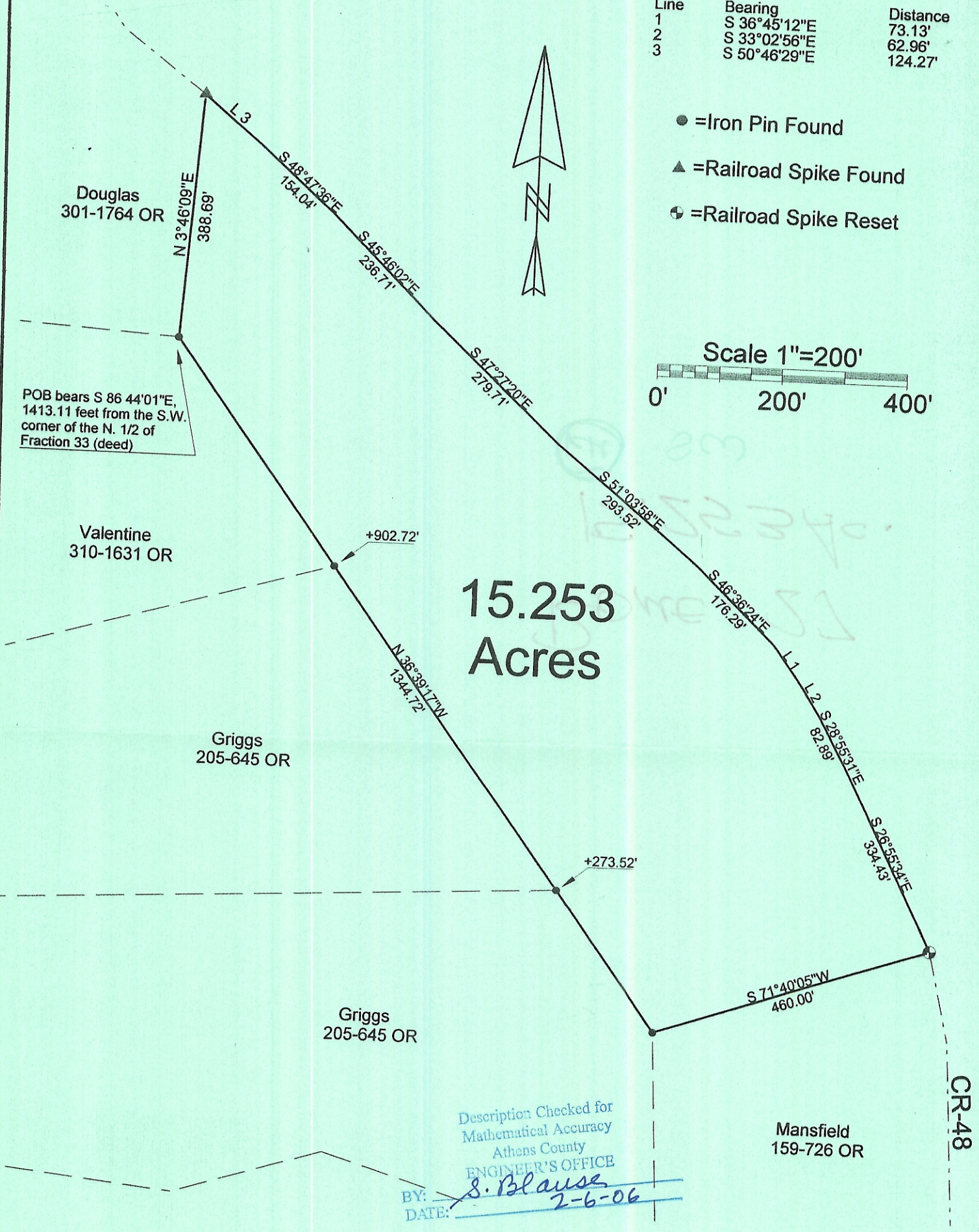
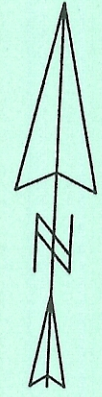
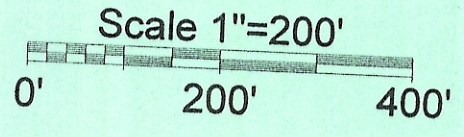


HIGHLAND SURVEYING Ltd.
Registered Professional Land Surveyor

Line	Bearing	Distance
1	S 36°45'12"E	73.13'
2	S 33°02'56"E	62.96'
3	S 50°46'29"E	124.27'

- =Iron Pin Found
- ▲ =Railroad Spike Found
- ⊕ =Railroad Spike Reset



Description Checked for
Mathematical Accuracy
Athens County
ENGINEER'S OFFICE
BY: S. Blause
DATE: 2-6-06

PLAT OF SURVEY OF A 15.253 AC. TRACT
 SURVEYED FOR GLEN LACKEY
 SUBDIVISION FRACTION 33
 TOWNSHIP ROME SECTION 27 TOWN 6 RANGE 12
 CORPORATION - COUNTY ATHENS STATE OHIO
 SCALE 1"= 200' DATE FEB, 2006

STATE OF OHIO
 KENNETH E. HIGHLAND
 S-7581
 REGISTERED PROFESSIONAL LAND SURVEYOR

[Signature]
 Kenneth E. Highland S-7581

Kenneth E. Highland
 80 Fayette St.
 Nelsonville, Ohio 45764
 740-753-1264