

Description Checked for
Mathematical Accuracy
Athens County
ENGINEER'S OFFICE

BY: Ronald Williams
DATE: 2/24/16



C. Thomas Smith
Ohio Professional Surveyor No. 6844
P.O. Box 393
Racine, Ohio 45771
740-949-2524

Description of survey for Thomas S. Brandeberry
Tract One

Being a part of tracts of land transferred to Thomas S. Brandeberry as recorded in Official Records Volume 469 at page 563 Athens County Recorder's Office, Athens County, Ohio, being a part of Section 31, Township-6, Range-11, Rome Township, Athens County, State of Ohio and more particularly described as follows;

Beginning at a point in the centerline of State Route 144 which bears South08°50'01"West, a distance of 476.55 feet and South81°09'59"East, a distance of 848.43 feet from an existing stone being the northwest corner of said Section 31, T-6, R-11;

Thence leaving said centerline South77°29'30"East, passing thru a 5/8" iron pin set at a distance of 31.11 feet and going a total distance of 152.34 feet to a point in the centerline of the Hocking River;

Thence along said centerline the following thirteen courses;

1. South28°46'57"East, a distance of 63.22 feet to a point;
2. South28°02'28"East, a distance of 281.83 feet to a point;
3. South29°39'35"East, a distance of 187.37 feet to a point;
4. South26°47'22"East, a distance of 166.04 feet to a point;
5. South10°20'05"East, a distance of 166.92 feet to a point;
6. South02°08'27"West, a distance of 138.55 feet to a point;
7. South24°08'23"West, a distance of 155.01 feet to a point;
8. South23°14'01"West, a distance of 248.85 feet to a point;
9. South29°00'33"West, a distance of 258.04 feet to a point;
10. South44°59'42"West, a distance of 521.46 feet to a point;
11. South27°11'28"West, a distance of 128.49 feet to a point;
12. South22°07'57"West, a distance of 84.59 feet to a point;
13. South08°31'55"West, a distance of 308.33 feet to a point being the northeast corner of a 2.18 acre tract transferred to Edward McClure as recorded in Official Records Volume 435 at page2165;

Thence leaving the centerline of said Hocking River and along the north line of said 2.18 acre tract North82°48'29"West, passing thru an existing iron pin at a distance of 62.53 feet and going a total distance of 77.32 feet to a point in the centerline of State Route 144;

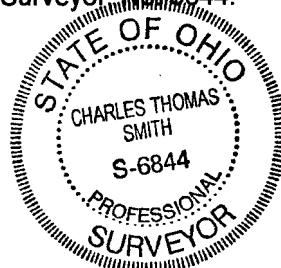
Thence leaving said north line and along said centerline the following fourteen courses;

1. North05°39'48"East, a distance of 377.44 feet to a point;
2. North05°26'52"East, a distance of 126.70 feet to a point;
3. North07°25'13"East, a distance of 162.07 feet to a point;
4. North08°56'49"East, a distance of 210.45 feet to a point;
5. North10°27'42"East, a distance of 91.15 feet to a point;
6. North11°46'55"East, a distance of 85.98 feet to a point;
7. North12°27'45"East, a distance of 209.79 feet to a point;
8. North10°53'39"East, a distance of 109.15 feet to a point;
9. North08°45'12"East, a distance of 314.51 feet to a point;
10. North09°48'27"East, a distance of 150.80 feet to a point;
11. North10°11'36"East, a distance of 160.67 feet to a point;
12. North08°46'14"East, a distance of 100.41 feet to a point;
13. North07°56'15"East, a distance of 207.71 feet to a point;
14. thence North07°06'14"East, a distance of 125.55 feet to the principal point of beginning containing 21.2359 acres more or less subject to all legal easements and rights of way.

All iron pins set are 5/8"X30" rebar with plastic ID cap stamped "CTS-6844".

The above description was prepared from an actual survey completed on the 22nd day of February, 2016, by C. Thomas Smith, Ohio Professional Surveyor No. 6844.

C. Thomas Smith
Ohio Professional Surveyor No. 6844



P.O.B. bears
 S 08°50'01" W 476.55' &
 S 81°09'59" E 848.43'
 from stone being Nw cor,
 Sec. 31, T-6, R-11

Instrument Book Page
 201600001177 OR 517 2511

BEING A PART OF SECTION 31,
 TOWNSHIP-6, RANGE-11
 ROME TOWNSHIP, ATHENS COUNTY,
 STATE OF OHIO.



LEGEND

△	Iron pin set
▲	Iron pin found
•	Point

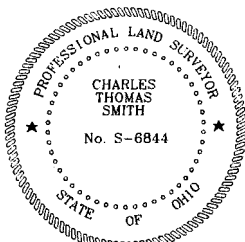
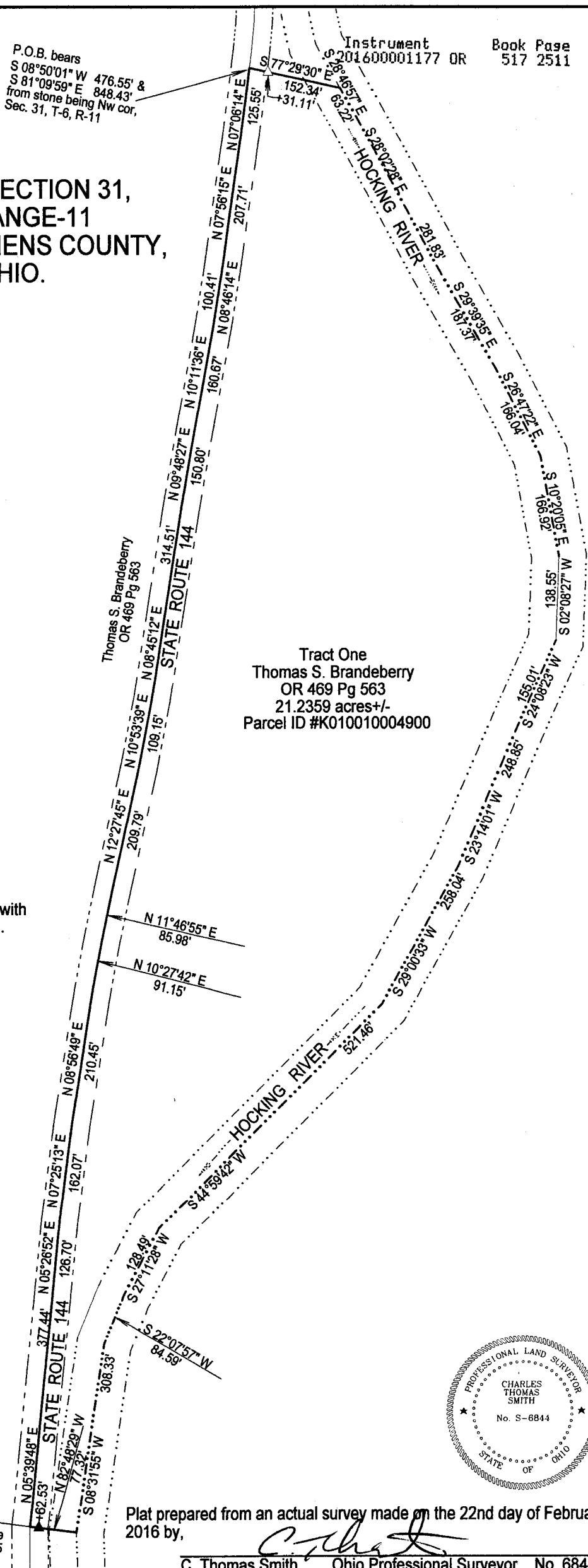
REFERENCES
 Current Tax Plats
 Previous surveys
 Deeds: as noted
 Aerial Photographs
 U.S.G.S. Topo Maps

Note: Bearings are assumed and are for the determination of angles only.

All iron pins set are 5/8"X30" rebar with plastic ID cap stamped "CTS-6844".

Thomas S. Brandeberry
 OR 469 Pg 563

Tract One
 Thomas S. Brandeberry
 OR 469 Pg 563
 21.2359 acres +/-
 Parcel ID #K010010004900



Surveyed and platted by
 C. Thomas Smith
 Ohio Professional Surveyor No 6844
 P.O. Box 393
 Racine, Ohio 45771
 740-949-2524

Edward McClure
 OR 435 Pg 2165
 2.18 ac +/-

Plat prepared from an actual survey made on the 22nd day of February, 2016 by,

C. Thomas Smith Ohio Professional Surveyor No. 6844