

5.6  
35.36  
N00°30'53"E  
1492.65'

N00°30'53"E 4135.60' Section 6 Canaan Township 6 1  
Section 36 Rome Township 36 31 Ames

Deer Trail Farms  
115-704 OR

LINE TABLE		
LINE	LENGTH	BEARING
L1	969.01	N15°11'04"E
L2	909.28	S00°39'06"W
L3	1351.56	N87°27'16"W
L4	409.74	N89°31'56"E
L5	122.32	S86°18'04"E
L6	355.95	S87°10'04"E
L7	53.19	S65°57'04"E
L8	73.72	S84°22'46"E
L9	103.60	S70°16'45"E

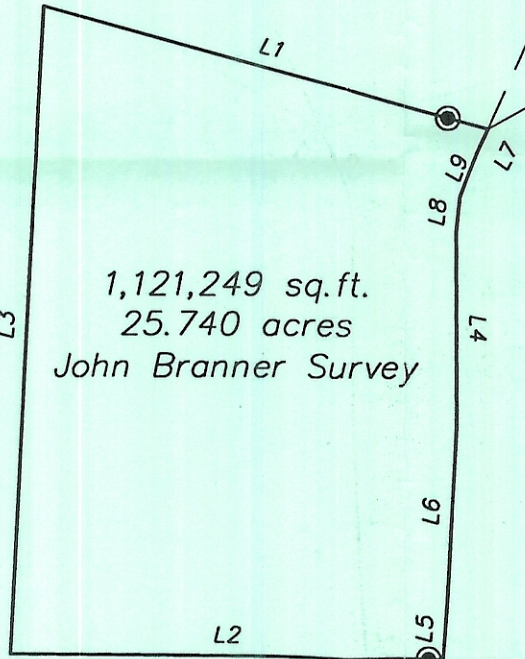
9,326,263 sq. ft.  
214.102 acres

Plat of Survey of 188.362 Acres  
Situated in Section 36, Town 6,  
Range 12, Rome Township,  
Athens County, Ohio  
Surveyed June 1999 for:  
Larry Webb

*Gregory K. Wright*  
Gregory K. Wright

N 89°51'39" W  
2665.04'

214.102 acres  
-25.740 acres  
188.362 acres



1,121,249 sq. ft.  
25.740 acres  
John Branner Survey

1222.05'  
S 00°21'29" W

Section 36 Rome  
Section 31 Bern

1334.78'  
S 89°58'01" E

Deer Trail Farms  
115-704 OR

Description checked for  
Mathematical Accuracy  
ATHENS COUNTY  
ENGINEER'S OFFICE  
BY: *S. Blause*  
DATE: *7-6-99*

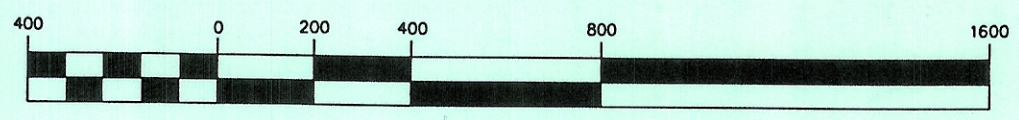
- △ = Railroad Spike Found
- ▲ = Railroad Spike Set
- ⊙ = Iron Pin Found
- = Iron Pin Set
- = Stone Found
- = Monument Found

2882.20' S 00°32'44" W

Robert W. & Carla S. Karn  
138-455 OR

Deer Trail Farms  
115-704 OR

GRAPHIC SCALE



( IN FEET )  
1 inch = 400 ft.



*Gregory K. Wright*  
Professional Engineer  
Professional Surveyor

11684 Channingway Blvd  
The Plains, Ohio 45780  
740-797-4142  
FAX 740-797-8623