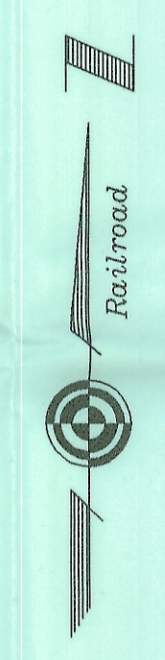


31  
 9. JOL 90  
 1.00300  
 JLLS  
 HOME-3



- △ = Railroad Spike Found
- ▲ = Railroad Spike Set
- = Iron Pin Found
- = Iron Pin Set
- = Stone Found
- = Monument Found

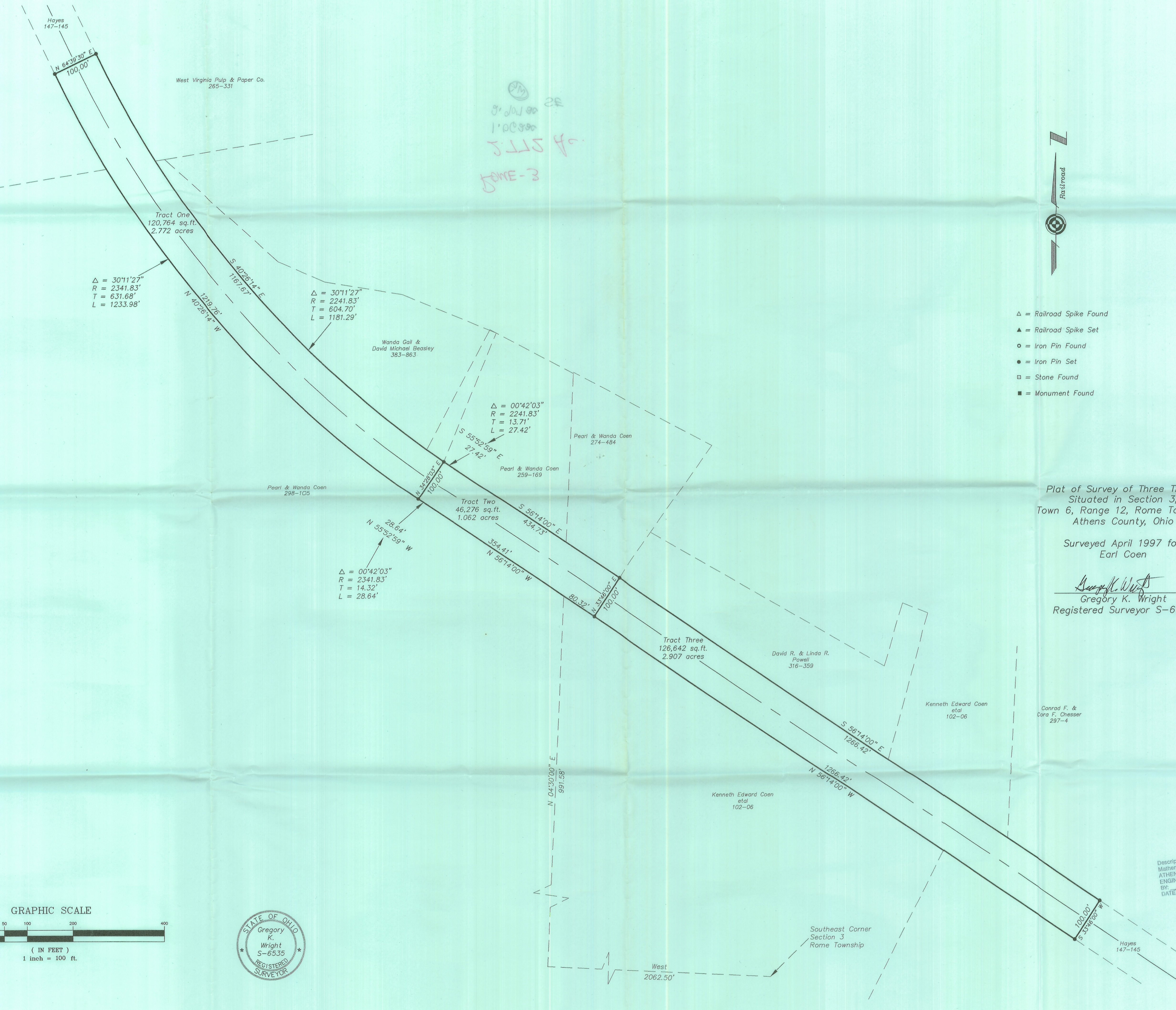
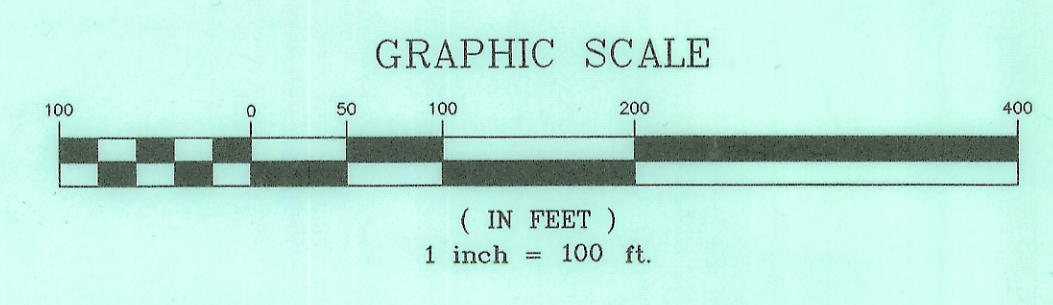
Plat of Survey of Three Tracts  
 Situated in Section 3,  
 Town 6, Range 12, Rome Township  
 Athens County, Ohio

Surveyed April 1997 for:  
 Earl Coen

*Gregory K. Wright*  
 Gregory K. Wright  
 Registered Surveyor S-6535

Description checked for  
 Mathematical Accuracy  
 ATHENS COUNTY  
 ENGINEERS OFFICE  
 BY *S. Blawie*  
 DATE: 6-17-97

"Approved by the Athens  
 County Regional Planning  
 Commission; No plat  
 Required"  
*S. Blawie* 3/23/2001  
 Planning Director Date  
*with deed language making  
 parcels continuous and  
 contiguous (see signed  
 descriptions).*



△ = 30°11'27"  
 R = 2341.83'  
 T = 631.68'  
 L = 1233.98'

△ = 30°11'27"  
 R = 2241.83'  
 T = 604.70'  
 L = 1181.29'

△ = 00°42'03"  
 R = 2241.83'  
 T = 13.71'  
 L = 27.42'

△ = 00°42'03"  
 R = 2341.83'  
 T = 14.32'  
 L = 28.64'