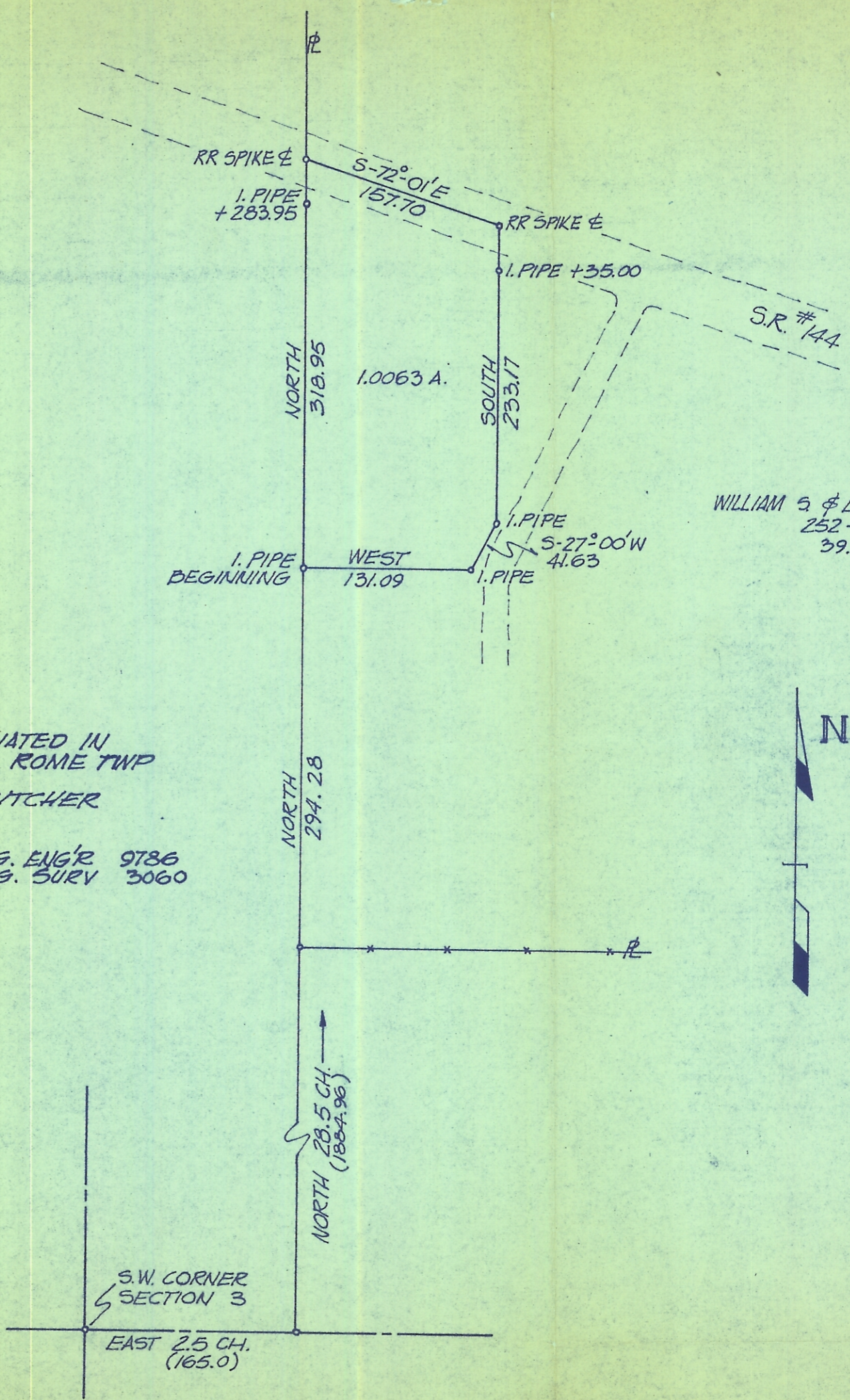


Rec 3
Rome
310-459

Rec 3



WILLIAM S. & LELA H. BUTCHER
252-237
39.30 A.

SURVEY OF 1.0063 ACRES SITUATED IN
SECTION 3 TOWN 6 RANGE 12 ROME TWP
ATHENS CO. OHIO
FOR WILLIAM S. & LELA H. BUTCHER
SOLD TO

SURVEYED BY F.A. DIXON REG. ENGR 9786
AUGUST 8, 1972 REG. SURV 3060
SCALE 1" = 100'

