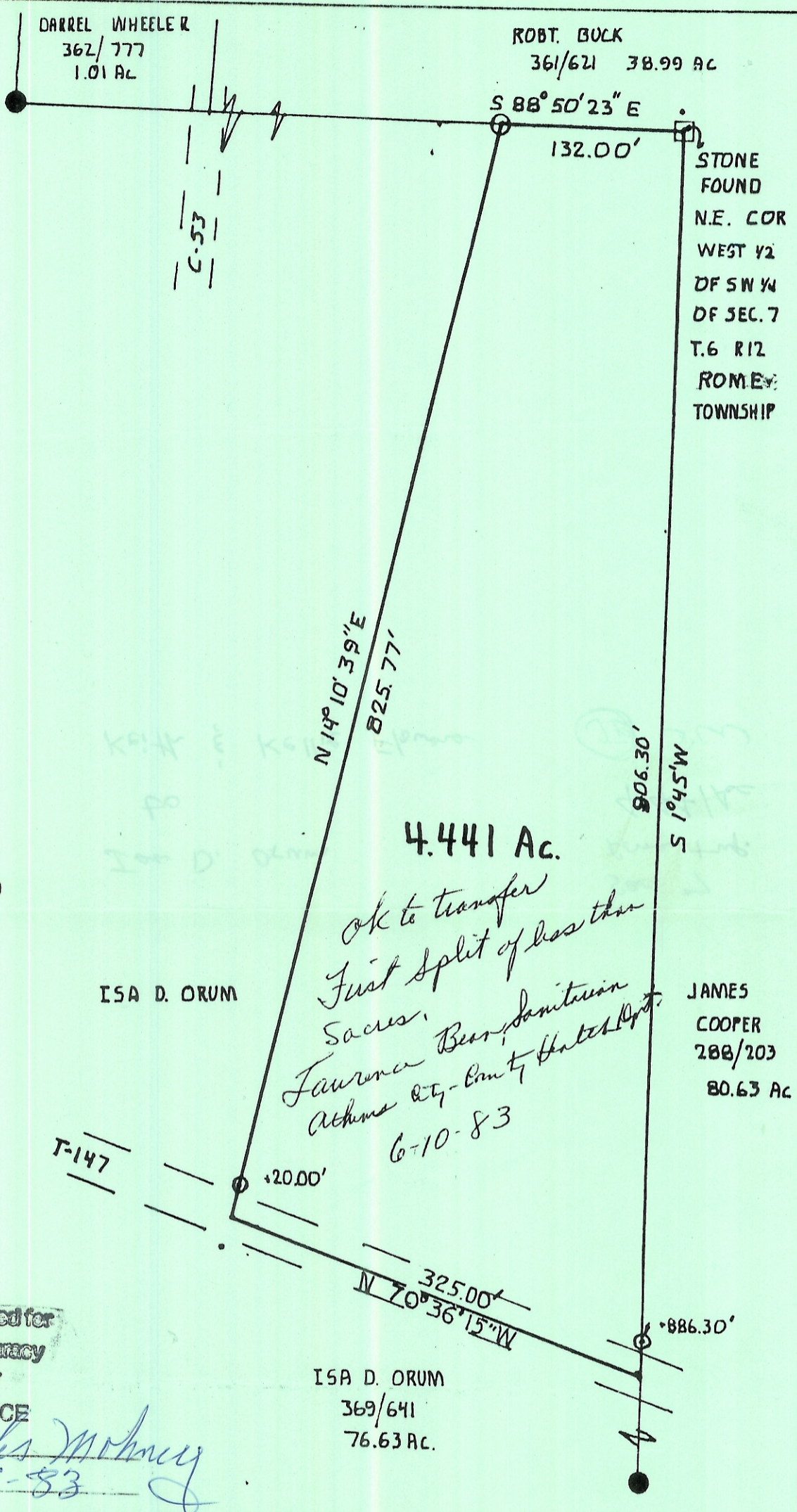


SCALE: 1"=100'
 ●=IRON PIN FOUND
 ○=IRON PIN SET



Description checked for
 Mathematical Accuracy

ATHENS COUNTY
 ENGINEER'S OFFICE

BY: *Charles Mohrney*
 6-16-83

SURVEY OF A 4.441 AC. TRACT IN
 SECTION 7, T.6, R.12, ROMEY
 TOWNSHIP, ATHENS Co., OHIO
 FOR ROBERT HART
 SURVEYED JUNE 1983

PREPARED BY:
 BRANNER SURVEYING
 Rt. 3, ATHENS OHIO
 614-592-5770
John M. Branner
 JOHN M. BRANNER.
 REG. SURVEYOR-6805

