

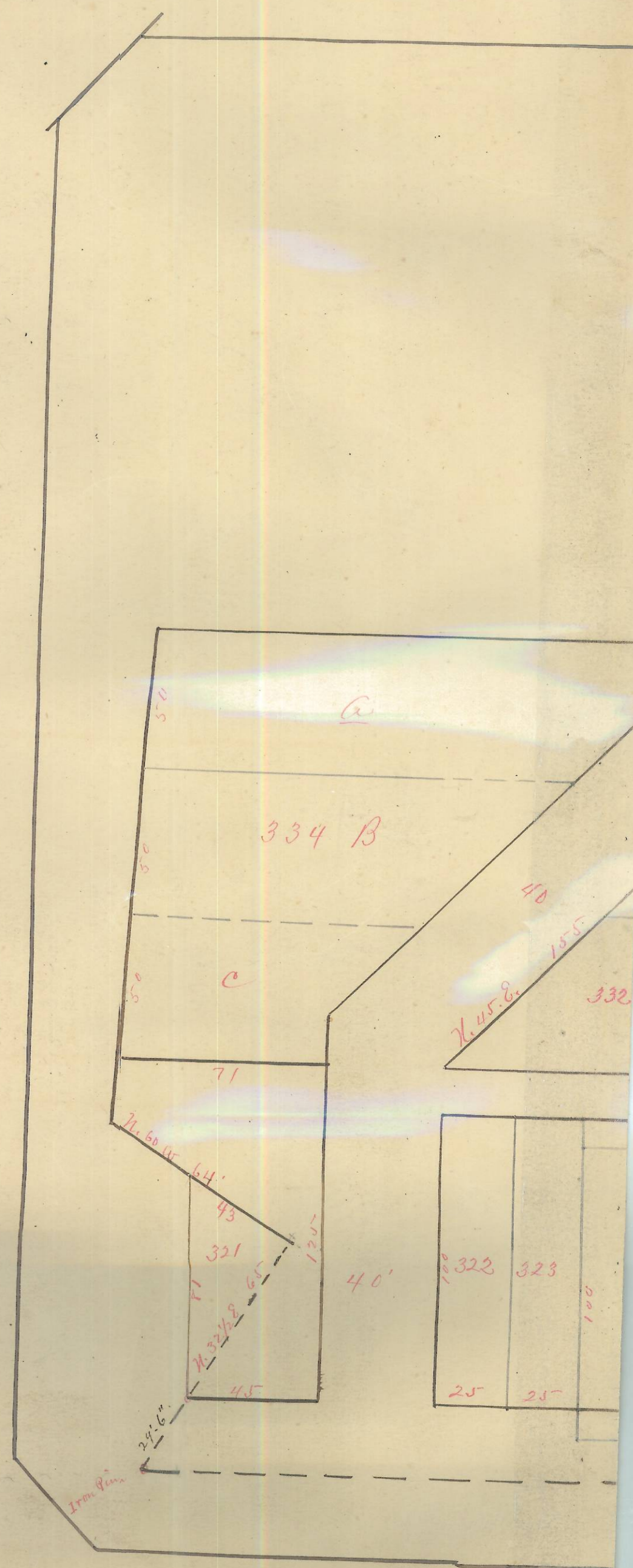
Old Plat Book # 2, page # 50

THOMAS G. WRIGHT'S ADD. to SEDALIA - OLD PLAT BOOK # 2, pgs. 50+51
For Additional Section of map See Envelope # 118A

50

ENVELOPE: 117B

THOMAS G. WRIGHT'S ADDITION
SEDALIA

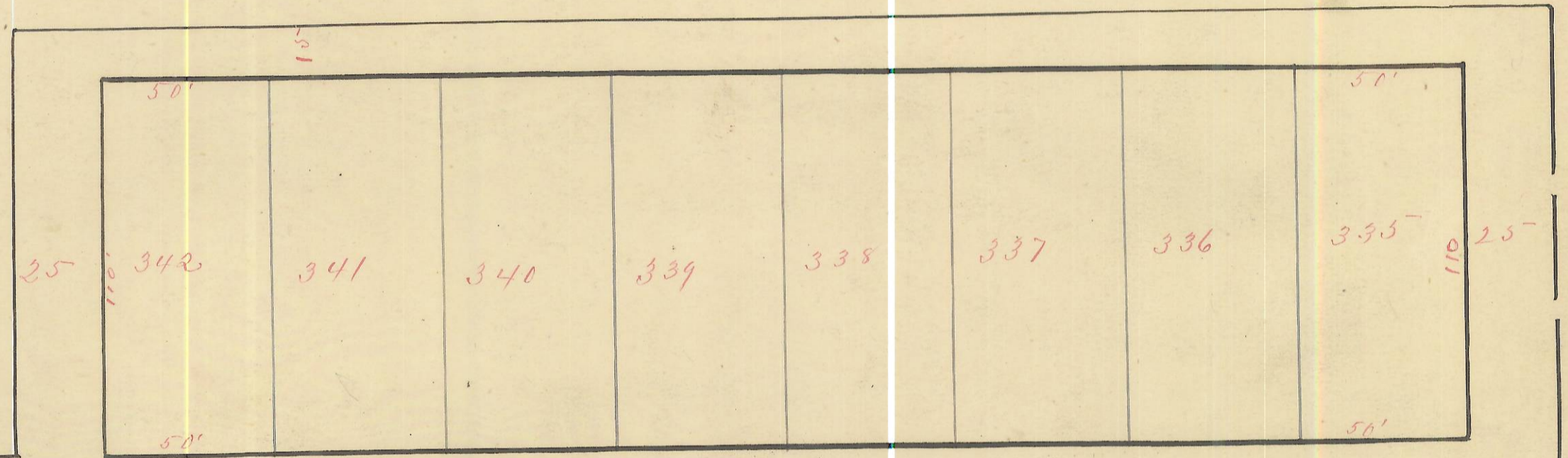


ENVELOPE: 118A
THOMAS G. WRIGHT'S ADDITION
SEDALIA

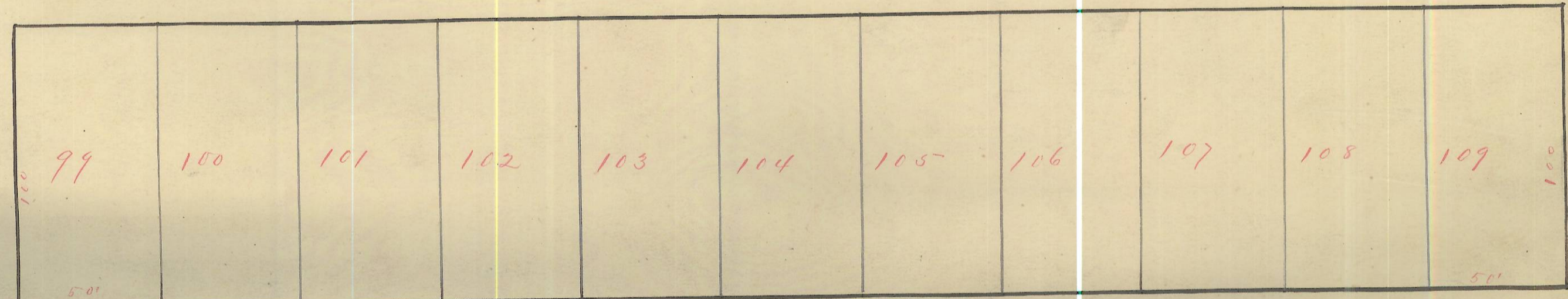
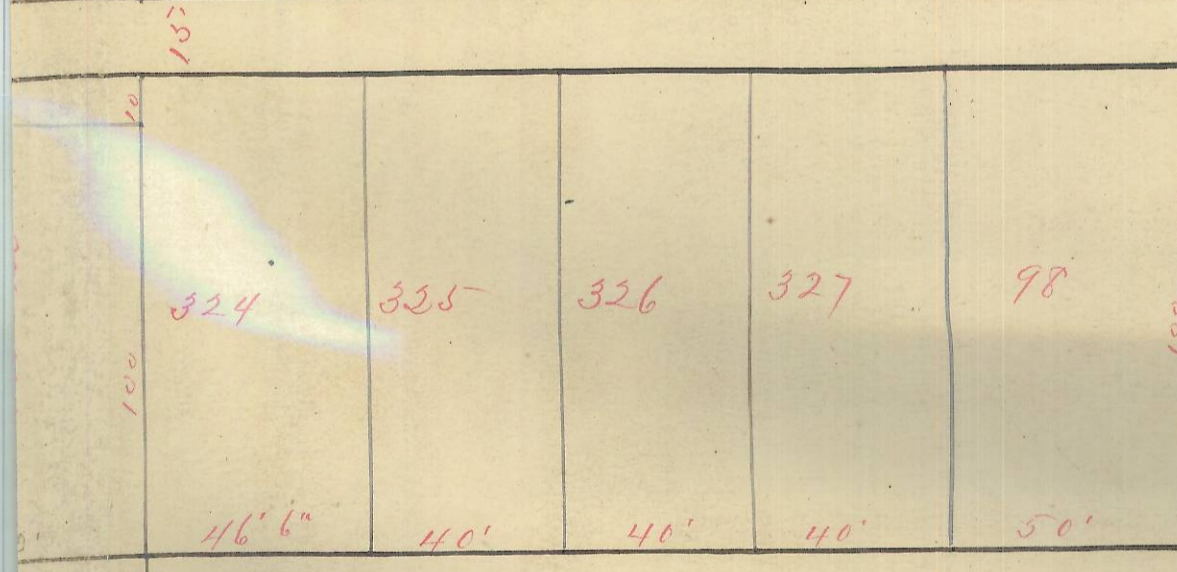
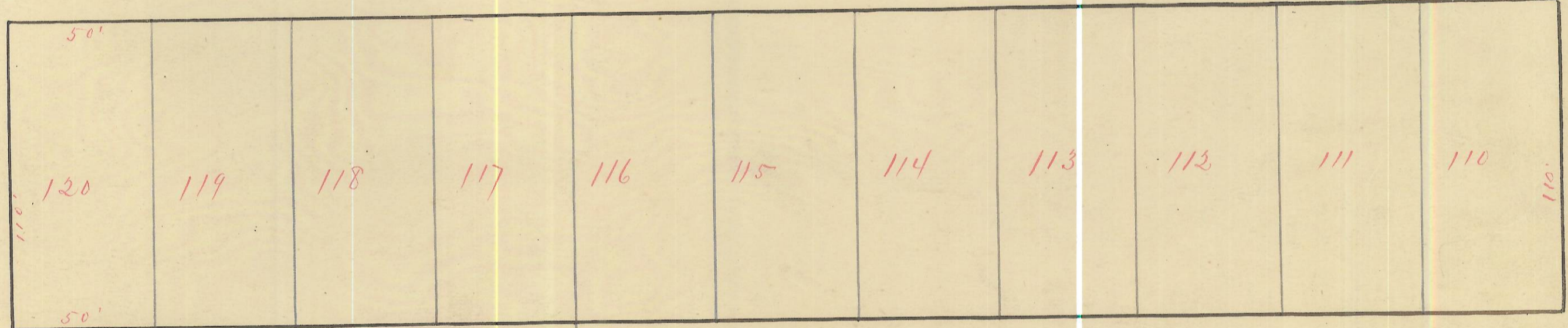
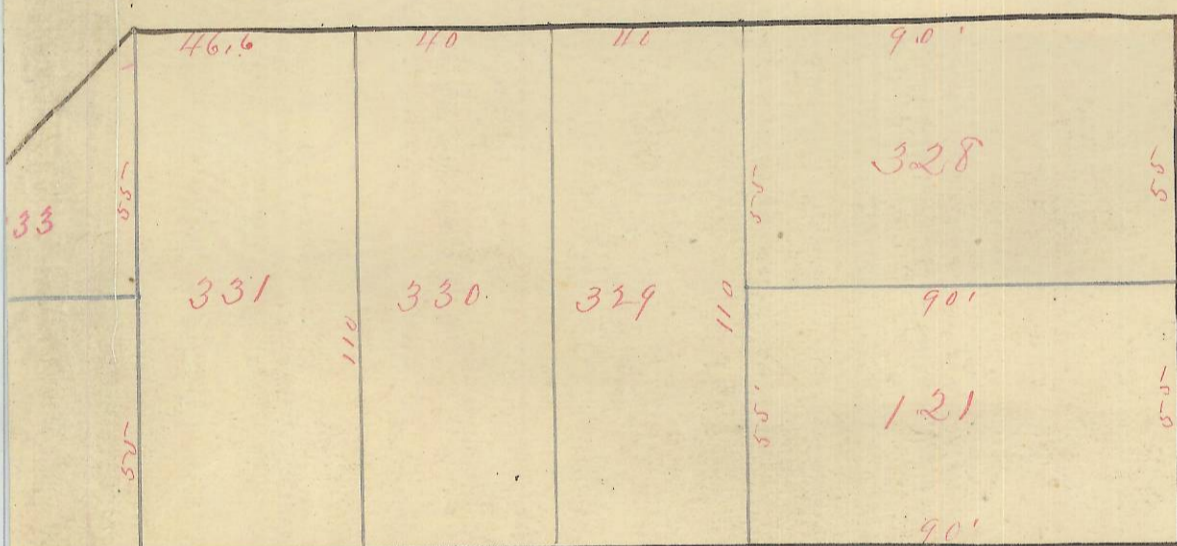
Thomas G. Wright's Addition to Sedalia Atwas Co Ohio By Will A. Hibbard County Surveyor.

This Plat includes the first & second Addition of said Wright to said Town
L. Hawk Recorder

Scale 40 ft = 1 inch



High St



Main St

Filed for record August 23rd 1887. Recorded same day. Attest L. Hawk Recorder.

118
117
116