



C. THOMAS SMITH and Associates Surveying

P. O. BOX 393
Racine, Ohio 45771

Being a tract of land recorded in official record Volume 82 at Page 706, Athens County Recorder's Office, Athens County, Ohio, also being a part of the Village of Glouster, Fraction 6, T-11-N, R-14-W, Trimble Township, Athens County, State of Ohio and more particularly described as follows:

Beginning at an existing P. K. Nail in the center line of State Route 78 being the Northwest corner of a 1.102 acre tract recorded in official record Volume 197 at Page 719, said P. K. Nail is assumed to bear North 03 degrees, 25 minutes, 10 seconds, East a distance of 2,114.25 feet and North 86 degrees 53 minutes 20 seconds, West a distance of 727.77 feet from the Southeast corner of said Fraction 6, T-11-N, R-14-W;

Thence leaving said center line and along the boundary of said 1.102 acre more or less tract the following two courses:

1. South 13 degrees 51 minutes 20 seconds West a distance of 171.85 feet to an existing iron pin;
2. South 86 degrees 21 minutes 20 seconds West a distance of 69.10 feet to an existing iron pin;

Thence leaving said boundary North 12 degrees 03 minutes 50 seconds West a distance of 193.54 feet to a P. K. Nail set in the center line of State Route 78;

Thence along said center line the following three courses:

1. South 87 degrees 59 minutes 06 seconds East a distance of 44.53 feet to a point;
2. South 84 degrees 01 minutes 23 seconds East a distance of 50.82 feet to a point.
3. South 78 degrees 38 minutes 13 seconds East a distance 56.63 feet to the principal point of beginning containing 0.458 acres more or less subject to all legal easements and rights of way.

Bearings were derived from a previous survey recorded in official record Volume 197 at Page 719.

The above description was prepared from an actual survey made on the 1st day of December 1997 by C. Thomas Smith, Ohio Professional Surveyor No. 6844.

Ohio Professional Surveyor No. 6844

Description checked for
 Mathematical Accuracy
 ATHENS COUNTY
 ENGINEER'S OFFICE
 BY: S. Hauser
 DATE: 9-10-98

32
TRM #9

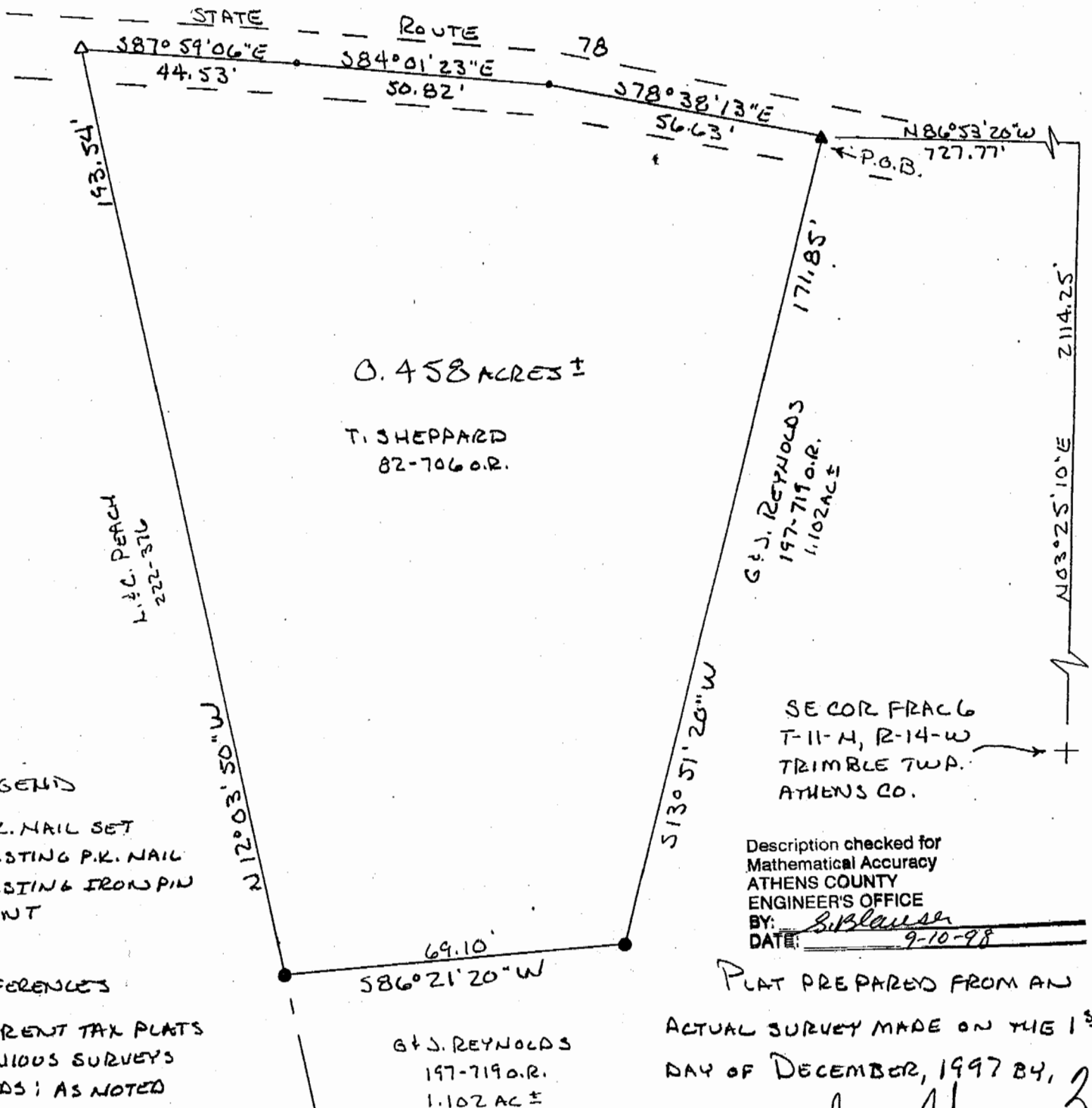
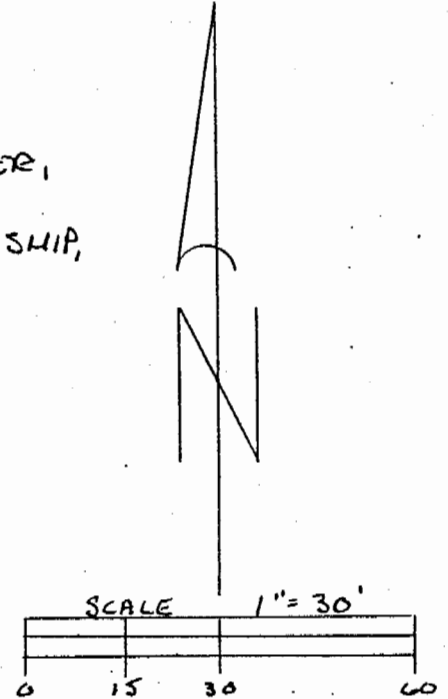


C. THOMAS SMITH and Associates Surveying

P. O. BOX 393
Racine, Ohio 45771

BEING A PART OF THE VILLAGE OF GLOUSTER,
FRACTION 6, T-11-N, R-14-W, TRIMBLE TOWNSHIP,
ATHENS COUNTY, STATE OF OHIO.

NOTE: BEARINGS WERE DERIVED FROM A PREVIOUS
SURVEY RECORDED IN OFFICIAL RECORDS VOL. 197 PG 719.



LEGEND

- ▲ - P.K. NAIL SET
- △ - EXISTING P.K. NAIL
- - EXISTING IRON PIN
- - POINT

REFERENCES

CURRENT TAX PLATS
PREVIOUS SURVEYS
DEEDS; AS NOTED

G.J. REYNOLDS
197-719 O.R.
1.102 AC ±

SEC COR FRAC 6
T-11-N, R-14-W
TRIMBLE TWP.
ATHENS CO.

Description checked for
Mathematical Accuracy
ATHENS COUNTY
ENGINEER'S OFFICE
BY: S. Blausen
DATE: 9-10-98

PLAT PREPARED FROM AN
ACTUAL SURVEY MADE ON THE 1ST
DAY OF DECEMBER, 1997 BY,

C. Thomas Smith 33
OHIO PROFESSIONAL SURVEYOR
No. 6844