

IN GLOUSTER

SURVEY DESCRIPTION OF 1.884 ACRE TRACT FOR FLORENCE SKINNER

Situated in the Village of Glouster, Trimble Township, Athens County, Ohio; being a part of Fraction No. 6, Section 15, Township 11, Range 14; and being more particularly described as follows:

Commencing for reference at the Southeast corner of Fraction No. 6; thence with the East line of Fraction No. 6 North 3 degrees 25 minutes 10 seconds East a distance of 1790.27 feet to a 5/8" iron pin found; thence leaving the East line of Fraction No. 6 North 86 degrees 53 minutes 20 seconds West a distance of 590.88 feet to a 2-3/4" x 4" railroad rail found; thence South 65 degrees 57 minutes 20 seconds West a distance of 117.65 feet to a 5/8" iron pin set, passing a 5/8" iron pin previously set at a distance of 48.65 feet, and being the point of Beginning of the tract of land to be described; thence continuing South 65 degrees 57 minutes 20 seconds West a distance of 61.56 feet to a 5/8" iron pin previously set; thence North 88 degrees 33 minutes 50 seconds West a distance of 77.00 feet to a 5/8" iron pin previously set; thence North 6 degrees 16 minutes 10 seconds East a distance of 209.50 feet to a 5/8" iron pin previously set; thence North 12 degrees 03 minutes 50 seconds West a distance of 216.06 feet to a PK nail set in the center of State Route 78 and passing a 5/8" iron pin previously set at a distance of 166.46 feet; thence with the center of State Route 78 the following six bearings and distances South 87 degrees 40 minutes 20 seconds East a distance of 47.31 feet to a PK nail set; thence South 84 degrees 13 minutes 00 seconds East a distance of 41.25 feet to a PK nail set; thence South 79 degrees 31 minutes 50 seconds East a distance of 58.34 feet to a PK nail set; thence South 76 degrees 07 minutes 40 seconds East a distance of 45.59 feet to a PK nail set; thence South 72 degrees 37 minutes 10 seconds East a distance of 58.11 feet to a PK nail set; thence South 68 degrees 49 minutes 10 seconds East a distance of 65.48 feet to a PK nail set; thence leaving the center of State Route 78 South 16 degrees 21 minutes 40 seconds West a distance of 182.29 feet to a 5/8" iron set and passing a 5/8" iron pin previously set at a distance of 50.29 feet; thence South 65 degrees 57 minutes 20 seconds West a distance of 69.00 feet to a 5/8" iron pin set; thence South 16 degrees 21 minutes 40 seconds West a distance of 130.00 feet to the point of beginning containing 1.884 acres more or less, subject to a 1.34 acre State of Ohio Easement for Highway Purposes recorded in Volume 230, Page 130, Athens County Recorder's Office and any private easements of record.

The above 1.884 acre survey is intended to describe part the tract of land deeded to Florence Skinner deed reference Volume OR 60 Page 182, Athens County Recorder's Office. This survey was based upon information obtained from tax maps, deed descriptions, previous surveys, existing monumentation, and State of Ohio highway plans. The reference bearing for this survey is the East line of Fraction No. 6 as North 3 degrees 25 minutes 10 seconds East. All iron pins set by this survey or previously set are capped by a 1-1/4" plastic identification cap. The above described property was surveyed by Larry P. Gerstner, Ohio Registered Surveyor No. 6344, on February 8, 1990.

No RPC approval required.



Description checked for
Mathematical Accuracy
ATHENS COUNTY
ENGINEER'S OFFICE

BY: Chris Cotton
DATE: 2-13-90 Survey by:

Larry P. Gerstner - Engineering and Surveying
119 West Main Street, Logan, Ohio 43138 385-4260

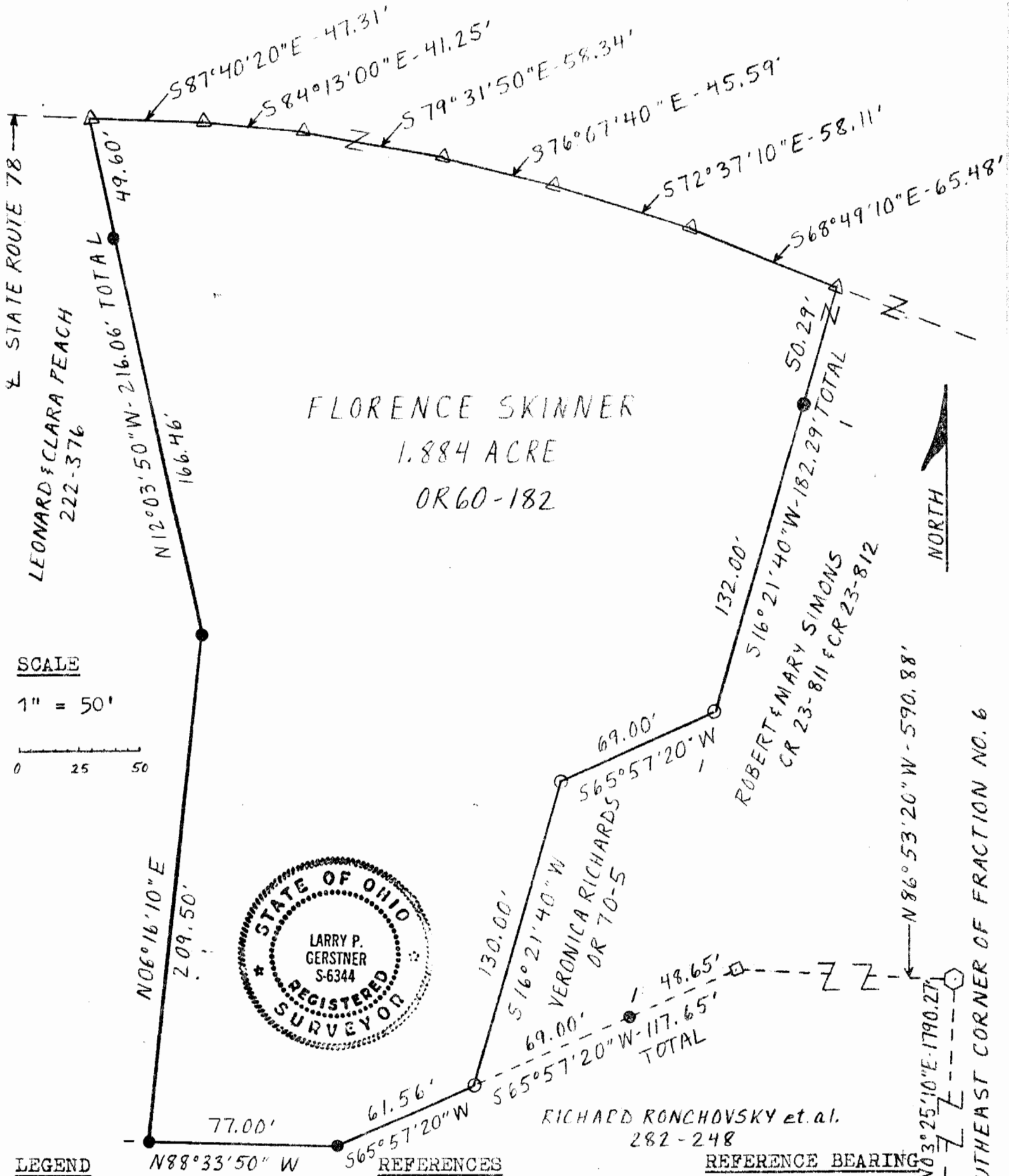
Larry P. Gerstner

TRM#15

6

SURVEY PLAT OF 1.884 ACRE TRACT FOR FLORENCE SKINNER

Situated in the Village of Glouster, Trimble Township, Athens County, Ohio; being a part of Fraction No. 6, Section 15, Township 11, Range 14.



LEGEND

REFERENCES

REFERENCE BEARING

- 5/8" iron pin found
- 5/8" iron pin with 1/4" plastic I.D. cap set
- 5/8" iron pin with 1/4" plastic I.D. cap previously set
- △ PK nail set in road
- Railroad rail found

- Tax maps
- Deed descriptions
- Previous surveys
- Existing monumentation
- State of Ohio Highway plans

East line of Fraction No. 6 as North 3°25'10" East.

I hereby certify that an actual survey was made under my supervision of the premises shown hereon on the 8th day of February, 1990 and that the plat is a correct representation of the premises as described by said survey.

Larry P. Gerstner
Registered Surveyor No. 6344

Larry P. Gerstner Engr. & Surv. - 119 West Main St., Logan, Ohio 43138

SI WJ