



ROBINSON SURVEYING

MEMBER-PROFESSIONAL LAND SURVEYORS OF OHIO
12355 LIARS CORNER ROAD, MILLFIELD, OHIO 45761

ALAN D. ROBINSON
Registered Land Surveyor

TELEPHONE
(740) 593-8774

TRACT "D" DESCRIPTION OF A 2.097 ACRE TRACT

Situated in Village of Trimble, Section 2, Town 11, Range 14, Trimble Township, Athens County, Ohio, and being a part of a 13.28 Acre tract described in Volume 309 Page 1641 Official Records of Athens County and being more particularly described as follows:

Commencing at a point in State Route 329 Bearing, South 31 degrees 14 minutes 53 seconds East, a distance of 619.91 feet from an iron pin found at the Southeast corner of Lot 144 of Eva B. Morehead Addition to the Village of Trimble, said point being the POINT OF BEGINNING of the following described tract;
thence, leaving said State Route 329, North 56 degrees 07 minutes 43 seconds East, a distance of 230.95 feet to an iron pin set at the top of a cliff, passing an iron pin set at 30.00 feet;
thence, following the top of said cliff, South 5 degrees 47 minutes 09 seconds East, a distance of 74.92 feet to a point;
thence South 0 degrees 26 minutes 26 seconds East, a distance of 43.26 feet to a point;
thence South 36 degrees 00 minutes 14 seconds East, a distance of 50.84 feet to a point;
thence South 20 degrees 08 minutes 18 seconds East, a distance of 134.72 feet to a point;
thence South 45 degrees 34 minutes 52 seconds East, a distance of 330.81 feet to an iron pin set in the North Right-of-way of State Route 329;
thence, leaving said cliff, South 10 degrees 32 minutes 55 seconds West, a distance of 30.00 feet to a point in the center of said State Route 329;
thence, following said State Route 329, North 77 degrees 52 minutes 53 seconds West, a distance of 121.15 feet to a point;
thence North 71 degrees 18 minutes 04 seconds West, a distance of 88.85 feet to a point;
thence North 56 degrees 23 minutes 54 seconds West, a distance of 89.68 feet to a point;
thence North 43 degrees 50 minutes 58 seconds West, a distance of 103.50 feet to a point;
thence North 37 degrees 13 minutes 09 seconds West, a distance of 106.51 feet to a point;
thence North 32 degrees 10 minutes 42 seconds West, a distance of 127.10 feet to a point;
thence North 28 degrees 28 minutes 42 seconds West, a distance of 53.63 feet to the POINT OF BEGINNING; said described tract containing 2.097 acres (91,351.7112 square feet).

Bearings are based on a survey of the 0.34-acre tract and are used to denote angles only.
Subject to all easements and right-of-way of record.

All iron pins set are 5/8 inch by 30-inch long rebar with a yellow cap stamped Alan Robinson RLS 8049.

Alan D. Robinson P.S. 8049 bases the above description on a field Survey completed April 30, 2001,

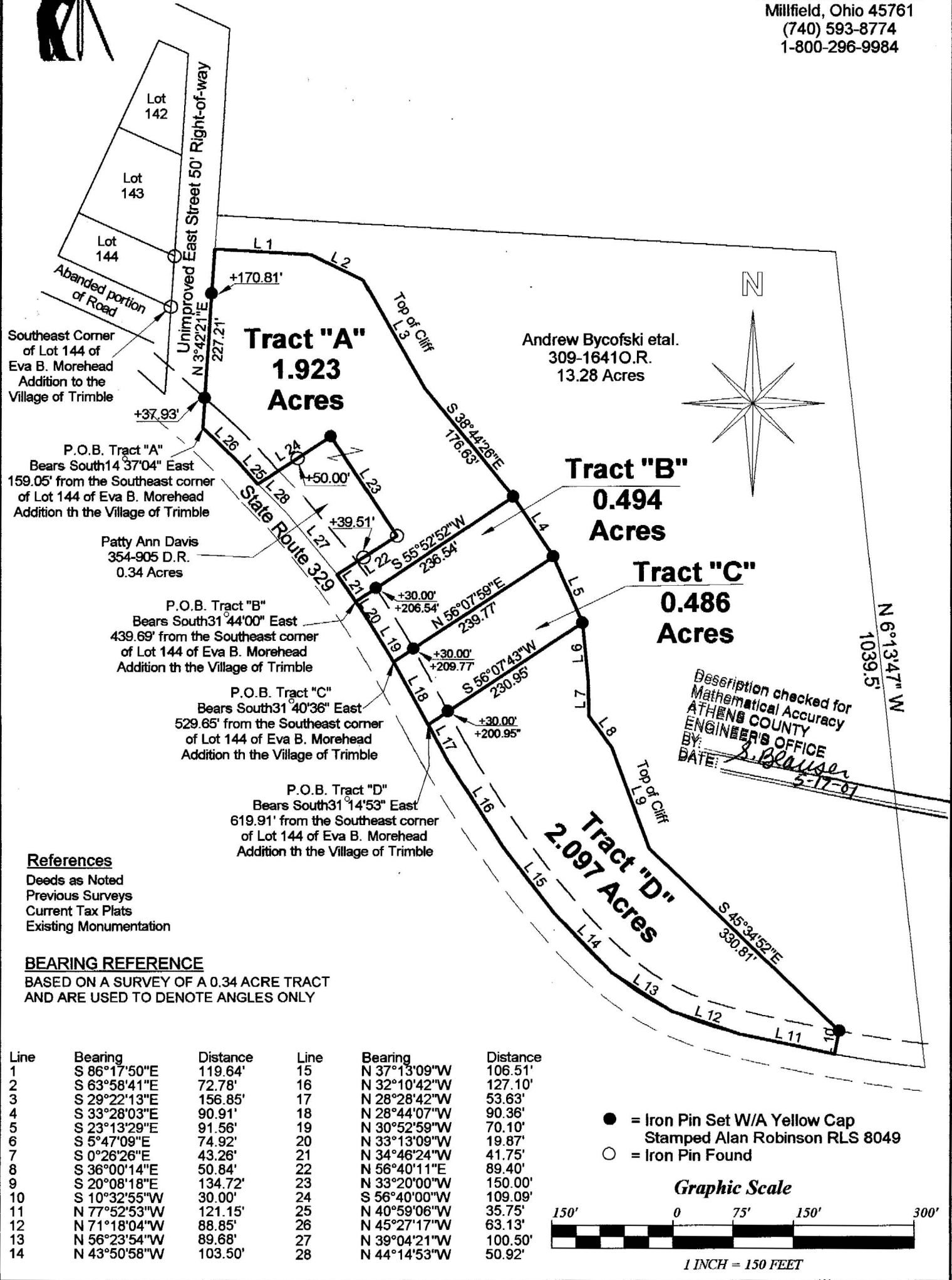
Alan D. Robinson



Description checked for
Mathematical Accuracy
ATHENS COUNTY
ENGINEER'S OFFICE
BY: S. Blause
DATE: 4-30-01

ROBINSON SURVEYING

12355 Liars Corner Rd.
Millfield, Ohio 45761
(740) 593-8774
1-800-296-9984



Plat of Survey of 4 Tracts
 Surveyed for: Carl Fouts Date 04/30/2001 Revised 5/15/2001
 Village of Trimble
 Section 2, Town 11, Range 14, Trimble Township
 Athens County, State of Ohio
 Alan D. Robinson Registered Professional Land Surveyor No. 8049
Alan D. Robinson

