

BRANNER SURVEYING

MEMBER-PROFESSIONAL LAND SURVEYORS OF OHIO

12500 N. PEACH RIDGE ROAD
ATHENS, OHIO 45701

JOHN M. BRANNER
Registered Land Surveyor

TELEPHONE
(614) 592-5778

Description of a 5.09 Acre Tract

Situated in Section 3, T.11, R.14, Trimble Township, Athens County, Ohio and being more particularly described as follows:

Commencing at the South-west corner of the North-west Quarter of Section 3, thence, South 04 Degrees 45 Minutes West, 120.5 feet to a point; thence South 85 Degrees 15 Minutes East, 150 feet to a point; thence, South 04 Degrees 42 Minutes 12 Seconds West, 146.26 feet to a point; thence, South 72 Degrees 19 Minutes 44 Seconds West, 162.51 feet to a point thence, South 04 Degrees 45 Minutes West, 215.01 feet to an iron pin at the North-west corner of a 5.08 acre tract; thence, along the North-line of said tract, South 83 Degrees 32 Minutes East, 500.71 feet to an iron pin at the North-east corner of said tract, said pin being the point of beginning for the tract of land herein described:

Thence, along the East-line of a 2.657 acre tract, North 00 Degrees 06 Minutes 40 Seconds West, 187.80 feet to an iron pin at the North-east corner of the 2.67 acre tract; thence, North 84 Degrees 47 Minutes 50 Seconds East, 515.55 feet to an iron pin set; thence, South 54 Degrees 13 Minutes East, 271.89 feet to an iron pin set; thence, South 27 Degrees 17 Minutes 16 Seconds East, 31.60 feet to a point in County Road 32; thence, along said road, South 62 Degrees 42 Minutes 54 Seconds West, 189.38 feet to a point; thence, South 69 Degrees 53 Minutes 54 Seconds West, 255.70 feet to a point; thence, South 66 Degrees 58 Minutes West, 299.47 feet to a point at the South-east corner of a 5.08 acre tract; thence, leaving said road, North 14 Degrees 41 Minutes 38 Seconds West, 252.64 feet to the point of beginning and containing 5.09 acres.

Subject to all easements and rights of way of record.

Description checked for
Mathematical Accuracy
ATHENS COUNTY
ENGINEER'S OFFICE
BY: Chris Cottler
DATE: 1-19-90

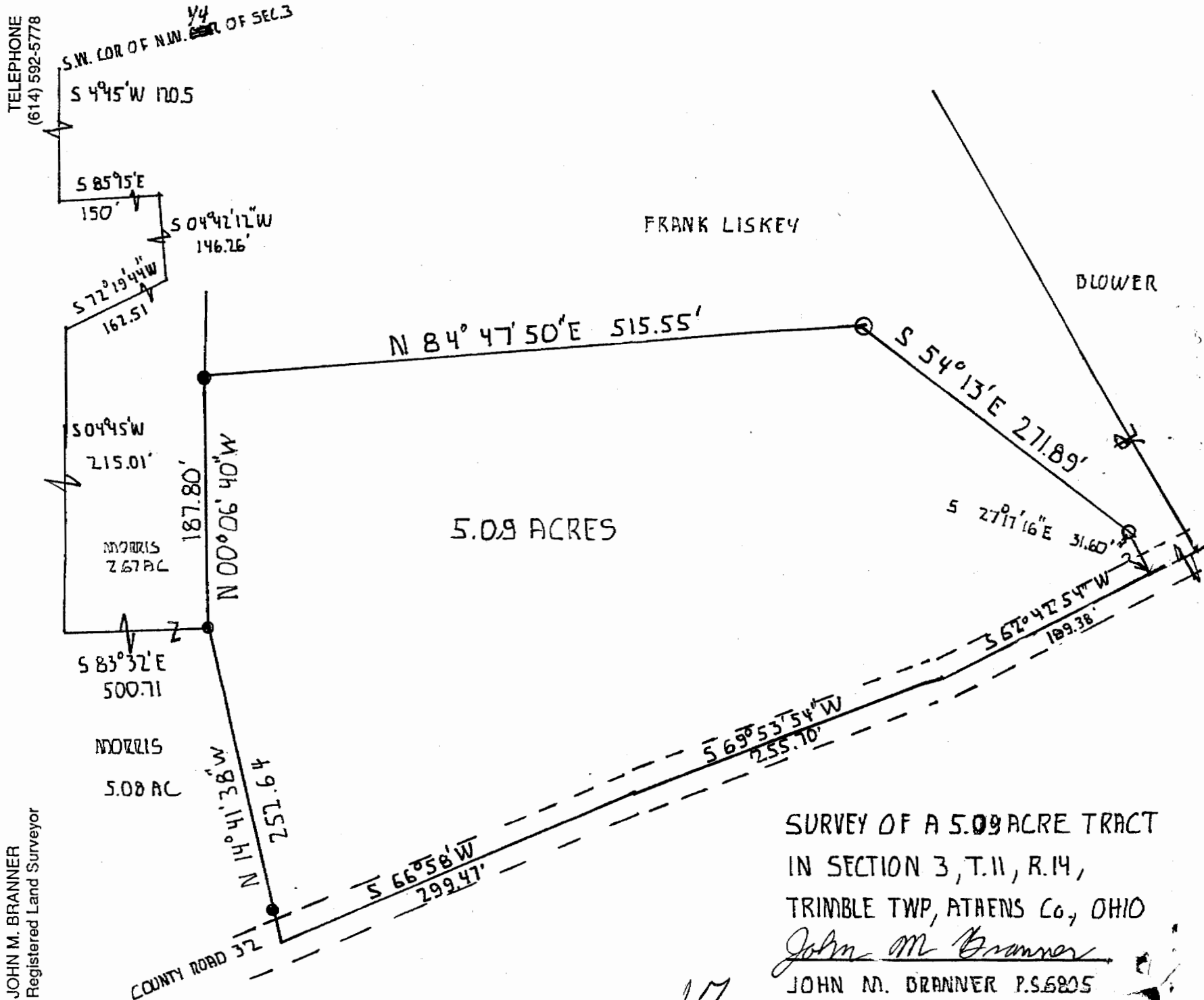
John M. Branner
John M. Branner P.S. 6805

16
T 11 R 14 S 3

BRANNER SURVEYING

MEMBER-PROFESSIONAL LAND SURVEYORS OF OHIO
12500 N. PEACH RIDGE ROAD
ATHENS, OHIO 45701

JOHN M. BRANNER
Registered Land Surveyor



SURVEY OF A 5.09 ACRE TRACT
IN SECTION 3, T.11, R.14,
TRIMBLE TWP, ATHENS Co, OHIO
John M. Branner
JOHN M. BRANNER P.S. 6805