



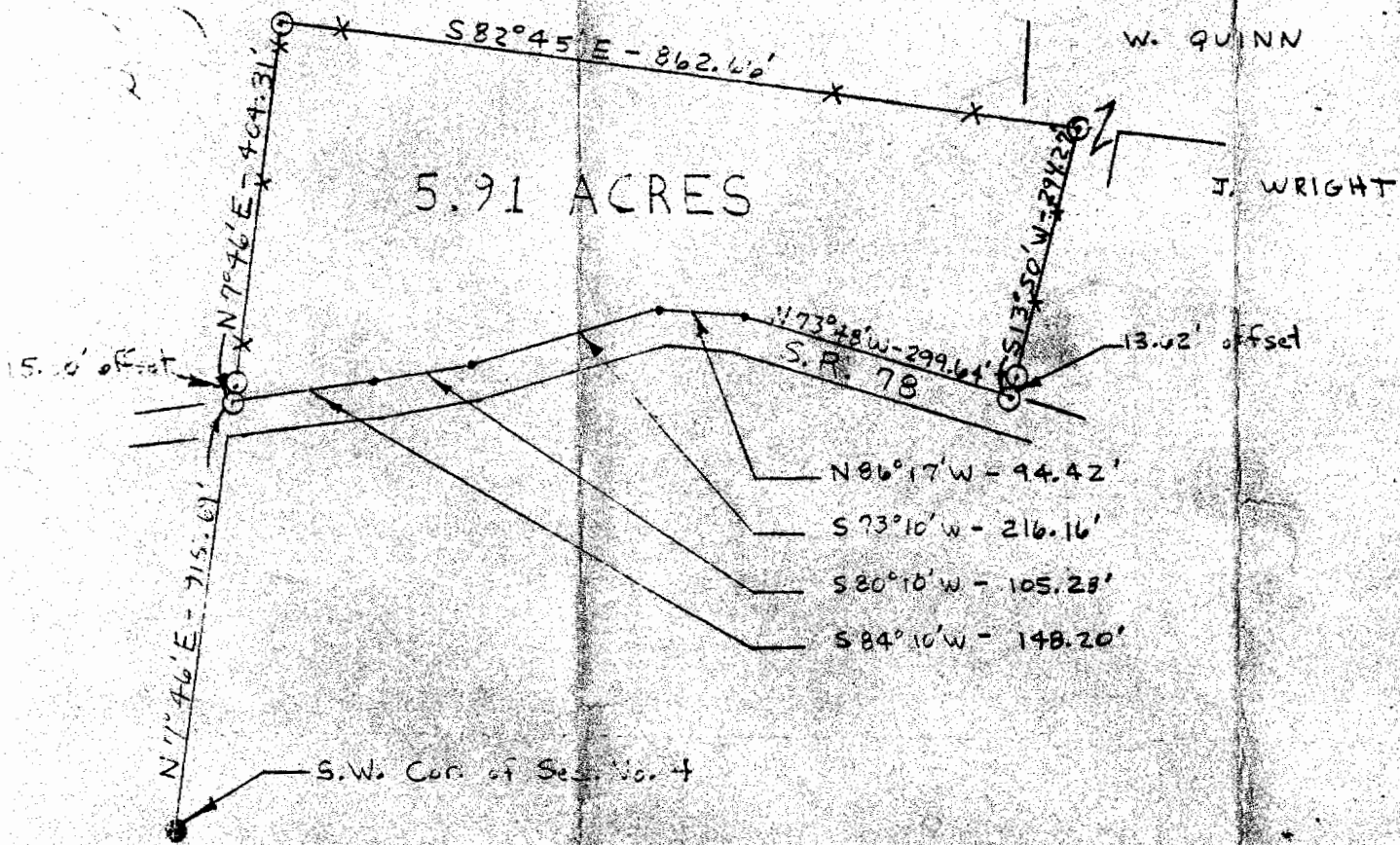
BEING A PART OF THE S.W. 1/4 OF THE S.W. 1/4 OF SECTION 4,  
TOWNSHIP 11, RANGE 14, TRIMBLE TOWNSHIP, ATHENS COUNTY, OHIO.



SCALE: 1" = 200'  
 ⊙ = IRON PIN  
 • = P.K. NAIL

VILLAGE OF GLOUSTER

5.91 ACRES



I HEREBY CERTIFY THAT AN ACTUAL SURVEY WAS MADE BY STEVEN C. SKINNER UNDER  
 MY SUPERVISION OF THE PREMISES SHOWN HEREON ON THE 19th DAY OF AUGUST 1969  
 AND THAT THE PLAT IS A CORRECT REPRESENTATION OF THE PREMISES AS DETERMINED  
 BY SAID SURVEY.

*Ernest P. Skermer*

64