

**SURVEY DESCRIPTION OF A 4.615 ACRE TRACT FOR THE KROGER COMPANY**

Situated in the Village of Trimble, Trimble Township, Athens County, Ohio; being part of the Southeast quarter of Section 8, Township 11, Range 14; and being more particularly described as follows:

Commencing for reference at a PK nail not found at the Northwest corner of the Southeast quarter of Section 8; thence North 90 degrees 00 minutes 00 seconds East a distance of 521.55 feet to a 5/8" iron pin set and being the point of **Beginning** of the tract of land to be described;

thence continuing North 90 degrees 00 minutes 00 seconds East a distance of 141.87 feet to a MAG nail set in the center of State Route 13;

thence with the center of State Route 13 the following six bearings and distances:

- 1) South 20 degrees 29 minutes 57 seconds East a distance of 78.87 feet to a MAG nail set;
- 2) South 24 degrees 28 minutes 23 seconds East a distance of 101.12 feet to a MAG nail set;
- 3) South 25 degrees 52 minutes 08 seconds East a distance of 105.83 feet to a MAG nail set;
- 4) South 28 degrees 21 minutes 12 seconds East a distance of 106.48 feet to a MAG nail set;
- 5) South 32 degrees 47 minutes 09 seconds East a distance of 102.62 feet to a MAG nail set;
- 6) South 37 degrees 06 minutes 38 seconds East a distance of 100.68 feet to a MAG nail set;

thence leaving the center of State Route 13 North 79 degrees 00 minutes 00 seconds West a distance of 33.08 feet to a 5/8" iron pin set;

thence North 82 degrees 30 minutes 00 seconds West a distance of 343.00 feet to a point in Sunday Creek;

thence North 64 degrees 30 minutes 00 seconds West a distance of 233.50 feet to a point in Sunday Creek;

thence North 21 degrees 00 minutes 00 seconds West a distance of 214.00 feet to point in Sunday Creek;

thence North 23 degrees 32 minutes 38 seconds East a distance of 164.84 feet to a MAG nail set in a Center Street bridge over Sunday Creek;

thence with Center Street South 74 degrees 00 minutes 00 seconds East a distance of 59.50 feet to a MAG nail set;

thence leaving Center Street North 72 degrees 35 minutes 21 seconds East a distance of 117.91 feet to the point of beginning, containing 4.615 acres more or less, and subject to the public easements of State Route 13 and Center Street, and any other public or private easements of record.

The above 4.615 acre survey is intended to describe all of a 2.5 acre first tract as deeded to Construction Builders Inc., deed reference Volume OR114, Page 857, Athens County Recorder's Office. This survey was based upon information obtained from tax maps, deed descriptions, previous surveys, existing monumentation, existing public roads, and old County maps. The reference bearing for this survey is the North line of the Southeast quarter of Section 8 as North 90 degrees 00 minutes 00 seconds East. Bearings are based upon an assumed meridian and are to denote angles only. All iron pins set by this survey are 5/8" by 30" and are capped by a 1-1/4" plastic identification cap stamped LPG-6344. The above described property was surveyed by Larry P. Gerstner, Ohio Registered Surveyor No. 6344, on August 12, 2002.



Description checked for  
Mathematical Accuracy  
ATHENS COUNTY  
ENGINEERS OFFICE  
BY: S. Blausen  
DATE: 8-16-02

*Larry P. Gerstner*

Survey by:

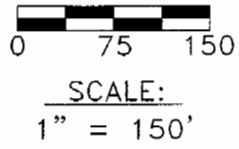
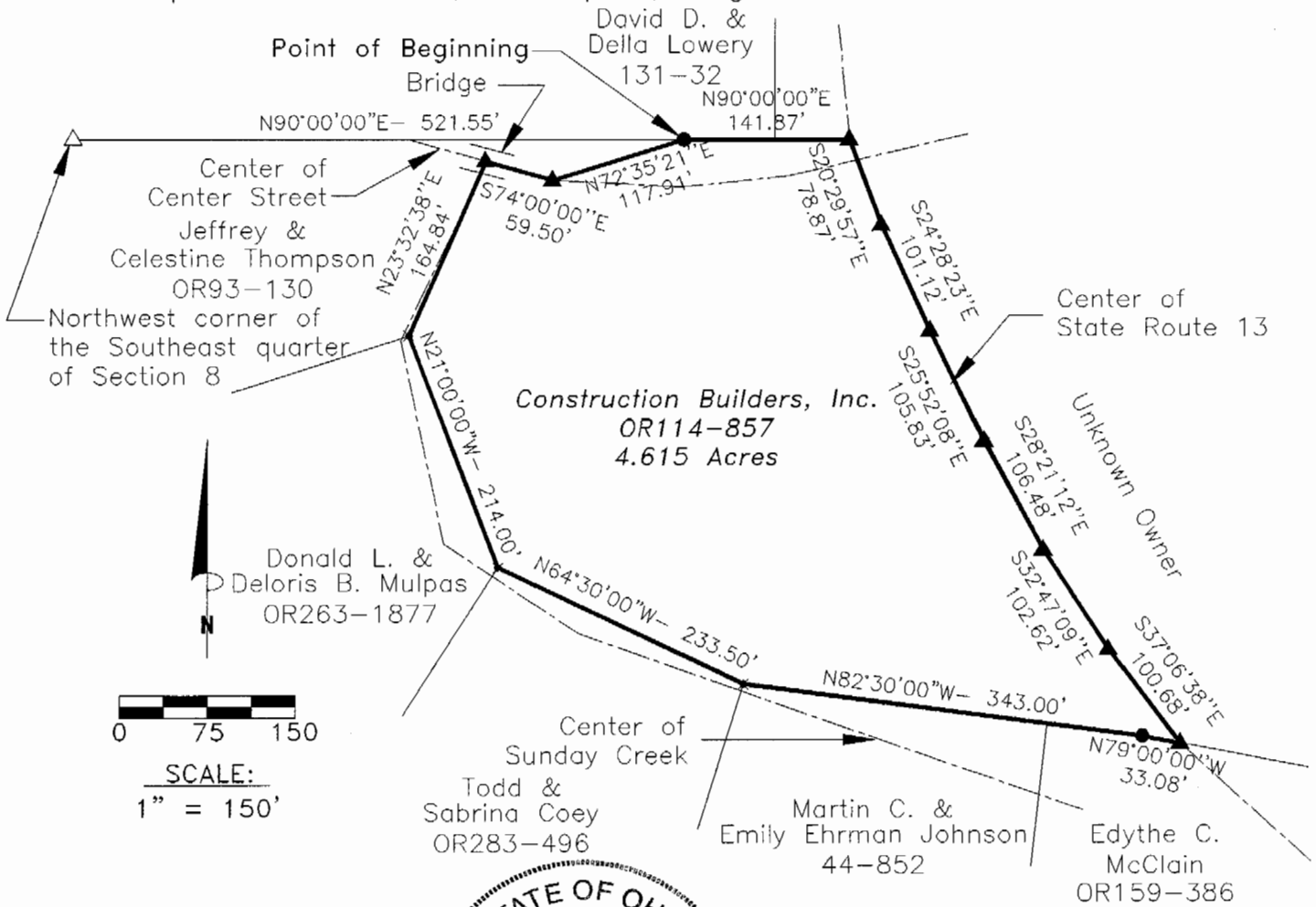
Larry P. Gerstner - Engineering and Surveying  
9 East Second Street, Suite A, Logan, Ohio 43138 740-385-4260

24

TRM#8

PLAT OF A 4.615 ACRE TRACT FOR THE KROGER COMPANY

Situated in the Village of Trimble, Trimble Township, Athens County, Ohio; being part of the Southeast quarter of Section 8, Township 11, Range 14.



REFERENCES:

- Tax maps
- Deed descriptions
- Previous surveys
- Existing monumentation
- Existing public road
- Old County maps



LEGEND

- × Point in Sunday Creek
- 5/8" x 30" iron pin with 1-1/4" plastic ID cap stamped LPG-6344 set
- △ PK nail not found
- ▲ MAG nail set

Description checked for  
Mathematical Accuracy  
ATHENS COUNTY  
ENGINEER'S OFFICE  
BY: *S. Blaus*  
DATE: *8-16-02*

REFERENCE BEARING:

North line of the Southeast quarter of Section 8 as North 90 degrees 00 minutes 00 seconds East. Bearings are based upon an assumed meridian and are to denote angles only.

CERTIFICATION:

I hereby certify that an actual survey was made under my supervision of the premises shown hereon on the 12th day of August, 2002 and that the plat is a correct representation of the premises as described by said survey.

*Larry P. Gerstner*  
Registered Surveyor No. 6344

Survey by: Larry P. Gerstner - Engineering and Surveying  
9 East Second Street, Suite A, Logan, Ohio 43138  
(740) 385-4260

25