

Glouster Pump Station Site

A tract of land situate on the waters of Sunday Creek, in Section 9, Township 11, Range 14, Trimble Township, Athens County, Ohio more particularly described as follows:

Commencing at a southwest corner of Section 9 Township 11, Range 14, N25°35'55" E, a distance of 2,418.46 feet to the true point of beginning, a 1/2 inch rebar with a yellow cap set, on the west right-of-way line of Main Street, from which a 3/4 inch iron pipe with a yellow cap found, stamped "EMHT, INC.", corner to the Trimble Local School District tract, and in the south line of a 10 foot alley, bears N42°31'50" W, a distance of 908.97 feet, and a 1/2 inch rebar found in centerline of a Main Street, corner to said Local School District tract, bears N15°02'17" E, a distance of 461.36 feet, thence through the said local school district tract, from which this tract is apart, for four calls;

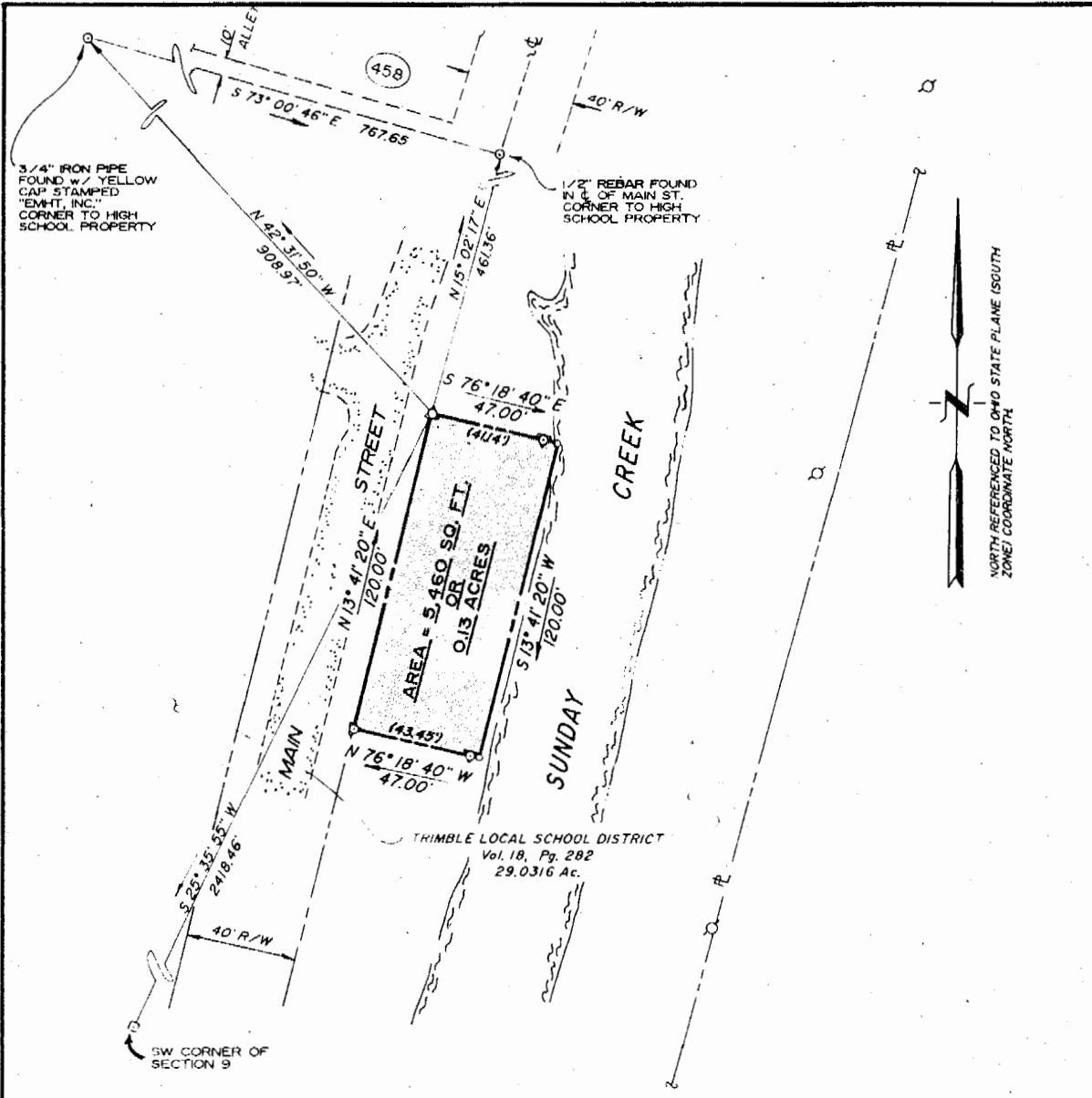
S76°18'40" E crossing at a distance of 41.14 feet, a 1/2 rebar with a yellow cap set at the top of the west bank of Sunday Creek, in all 47.00 feet to a point in the west low water mark of said creek, thence down Sunday Creek with said west low water mark;

S13°41'20" W, a distance of 120.00 feet to a point at the west low water mark of Sunday Creek;

N76°18'40" W crossing at 3.55 feet a 1/2 inch rebar with a yellow cap set, at the top of the west bank of Sunday Creek, in all 47.00 feet to a 1/2 inch rebar with a yellow cap set on the west right-of-way line of Main Street, thence with the west right-of-way line of said Street;

TRM 9

8



3/4" IRON PIPE FOUND w/ YELLOW CAP STAMPED "EMHT, INC." CORNER TO HIGH SCHOOL PROPERTY

1/2" REBAR FOUND IN E. OF MAIN ST. CORNER TO HIGH SCHOOL PROPERTY



NOTES:

△ - INDICATES 1/2" REBAR w/ YELLOW CAP SET

100 YEAR FLOOD ELEVATION = 685.0

PLAT SHOWING SURVEY OF
A 0.13 ACRE PARCEL
BEING PART OF A 29.0316 ACRE TRACT OF LAND
IN THE VILLAGE OF GLOUSTER
 FOR THE
GLOUSTER PUMP STATION SITE
 FOR THE
TRIMBLE TOWNSHIP
WASTEWATER TREATMENT DISTRICT



SITUATED IN
SECTION 9, TOWNSHIP 11, RANGE 14
TRIMBLE TOWNSHIP, ATHENS COUNTY, OHIO

DATE: FEBRUARY 14, 1991

SCALE: 1" = 50'

WILLIAM J. WHITMAN, R.P.S.
OHIO REG. No. S-6774



DUNN ENGINEERS, INC.

10