

Tract #1 18.23 Acres

Situated in Section 11, T.11, R.14, Trimble Township, Athens County, Ohio and being a part of a tract of land as described in Volume 10, Page 564 of the Official Records of Athens County and being more particularly described as follows:

Commencing at a stone that is South ,1220.88 feet (deed) from the North-west corner of Section 11 Thence, along the West-line of Section 11, South 3 degrees 27 minutes 56 seconds West, 1122.00 feet to an iron pin set and being the POINT OF BEGINNING of the tract of land herein described:

Thence, along the South line of Guffy (270-1886 O.R.)

South 86 degrees 36 minutes 44 seconds East a distance of 307.23 feet to a Mag-nail set in Antle Orchard Road, passing an iron pin set at 267.23 feet;

Thence, along said road:

South 13 degrees 24 minutes 16 seconds East a distance of 134.49 feet;

South 34 degrees 13 minutes 43 seconds East a distance of 167.45 feet;

South 27 degrees 24 minutes 20 seconds East a distance of 65.01 feet;

South 21 degrees 27 minutes 40 seconds East a distance of 189.84 feet;

South 42 degrees 39 minutes 30 seconds East a distance of 74.95 feet;

South 55 degrees 06 minutes 07 seconds East a distance of 103.16 feet;

South 60 degrees 25 minutes 17 seconds East a distance of 136.17 feet;

Thence, leaving said road, South 29 degrees 17 minutes 22 seconds West a distance of 803.54 feet to an iron pin set, passing an iron pin set at 28.31 feet;

Thence, along the north line of Buckingham Coal Co. (297-17 O.R.), North 86 degrees 51 minutes 13 seconds West a distance of 476.32 feet to an iron pin set in Grantor's South-west corner;

Thence, along the West line of Section 11 and the East line of Buckingham Coal Co.(297-17 O.R.)

North 3 degrees 27 minutes 56 seconds East a distance of 1380.38 feet to the point of beginning and containing 18.23 Acres.

Subject to all easements and rights of way of record

Bearings Grid North N.A.D. 83

Iron pins set are 5/8"x30" long rebar with plastic I.D. Cap. stamped Branner P.S. 6805

The above description is based on a field survey completed April 2013 by John M. Branner P.S. 6805



John M. Branner

Description Checked for
Mathematical Accuracy
Athens County

ENGINEER'S OFFICE

BY: *C. Williams*

DATE: 4/30/13

Description Approved
Jill A. Thompson 10-2-13
Athens County Auditor

TRACT#2 (14.22 ACRE TRACT)

Situated in Section 11, T.11, R.14, Trimble Township, Athens County, Ohio and being a part of a tract of land as described in Volume 10, Page 564 of the Official Records of Athens County and being more particularly described as follows:

Commencing at a stone that is South , 1220.88 feet (deed) from the North-west corner of Section 11 Thence, along the West-line of Section 11, South 3 degrees 27 minutes 56 seconds West, 1122.00 feet to an iron pin set;

Thence, along the South line of Guffy (270-1886 O.R.)

South 86 degrees 36 minutes 44 seconds East a distance of 307.23 feet to a mag-nail set in Antle Orchard Road, passing an iron pin set at 267.23 feet and being THE POINT OF BEGINNING for the tract of land herein described:

Thence, leaving said road and along the South-lines of Guffy (270-1886 O.R.) and U.S.A. (204-85 D.R.) South 86 degrees 36 minutes 44 seconds East a distance of 1025.62 feet to an iron pin set, passing an iron pin set at 40.00 feet;

Thence, South 2 degrees 28 minutes 51 seconds West a distance of 876.98 feet to a mag nail set in Antle Orchard Road, passing an iron pin set at 849.33 feet;

Thence, along said road:

North 78 degrees 46 minutes 48 seconds West a distance of 97.44 feet;

North 61 degrees 27 minutes 07 seconds West a distance of 83.93 feet;

North 60 degrees 18 minutes 54 seconds West a distance of 389.06 feet;

North 60 degrees 25 minutes 17 seconds West a distance of 136.17 feet;

North 55 degrees 06 minutes 07 seconds West a distance of 103.16 feet;

North 42 degrees 39 minutes 30 seconds West a distance of 74.95 feet;

North 21 degrees 27 minutes 40 seconds West a distance of 189.84 feet;

North 27 degrees 24 minutes 20 seconds West a distance of 65.01 feet;

North 34 degrees 13 minutes 43 seconds West a distance of 167.45 feet;

North 13 degrees 24 minutes 16 seconds West a distance of 134.49 feet to the point of beginning and containing 14.22 acres.

Subject to all easements and rights of way of record

Bearings Grid North N.A.D. 83

Iron pins set are 5/8"x30" long rebar with plastic I.D. Cap. stamped Branner P.S. 6805

The above description is based on a field survey completed April 2013 by John M. Branner P.S. 6805

John M. Branner



Description Checked for
Mathematical Accuracy
Athens County
ENGINEER'S OFFICE
BY: *CTM Williams*
DATE: 4/30/13

Description Approved
Jill A. Thompson 10-2-13
Athens County Auditor

TRACT #3 21.902 ACRES

Situated in Section 11, T.11, R.14, Trimble Township, Athens County, Ohio and being a part of a tract of land as described in Volume 10, Page 564 of the Official Records of Athens County and being more particularly described as follows:

Commencing at a stone that is South ,1220.88 feet (deed) from the North-west corner of Section 11 Thence, along the West-line of Section 11, South 3 degrees 27 minutes 56 seconds West, 1122.00 feet to an iron pin set;

Thence, along the South -line of Guffy (270-1886 O.R.)

South 86 degrees 36 minutes 44 seconds East a distance of 307.23 feet to a mag-nail set in Antle Orchard Road, passing an iron pin set at 267.23 feet;

Thence, leaving said road and along the South-lines of Guffy (270-1886 O.R.) and U.S.A. (204-85 D.R.) South 86 degrees 36 minutes 44 seconds East a distance of 1025.62 feet to an iron pin set, passing an iron pin set at 40.00 feet and being THE POINT OF BEGINNING for the tract of land herein described:

Thence, along the South-line of U.S.A. (204-85 D.R.)

South 86 degrees 36 minutes 44 seconds East a distance of 1320.38 feet to an iron pin set;

Thence, along the west-line of Moore (22-92 O.R.)

South 2 degrees 41 minutes 52 seconds West a distance of 126.68 feet to a stone found;

Thence ,along the lines of K.A.A.S. Inc. (346-218 O.R.)

South 5 degrees 57 minutes 19 seconds West a distance of 327.00 feet to an iron pin set;

South 87 degrees 46 minutes 4 seconds East a distance of 425.43 feet;

South 00 degrees 58 minutes 56 seconds West a distance of 10.96 feet to a point in Antle Orchard Road

Thence, along said road:

South 83 degrees 51 minutes 26 seconds West a distance of 784.98 feet;

South 79 degrees 10 minutes 22 seconds West a distance of 51.17 feet;

South 61 degrees 55 minutes 58 seconds West a distance of 170.70 feet;

South 68 degrees 02 minutes 24 seconds West a distance of 169.41 feet;

South 76 degrees 33 minutes 56 seconds West a distance of 292.09 feet;

South 82 degrees 57 minutes 46 seconds West a distance of 80.22 feet;

South 89 degrees 04 minutes 21 seconds West a distance of 238.91 feet to a mag nail set;

Thence, leaving said road,

North 02 degrees 28 minutes 51 seconds East a distance of 876.98 feet (passing an iron pin set at 27.65 feet) to the point of beginning and containing 21.902 Acres.

Subject to all easements and rights of way of record

Bearings Grid North N.A.D. 83

Iron pins set are 5/8"x30" long rebar with plastic I.D. Cap. stamped Branner P.S. 6805

The above description is based on a field survey completed April 2013 by John M. Branner P.S. 6805



John M. Branner

Description Checked for
Mathematical Accuracy
Athens County
ENGINEER'S OFFICE
BY: *cmwilliams*
DATE: 4/30/13

Description Approved
Jill A. Thompson 10-2-13
Athens County Auditor

Description Approved
Jill A. Thompson 10-2-13
Athens County Auditor

Tract #4 31.02 Acres

Situated in Section 11, T.11, R.14, Trimble Township, Athens County, Ohio and being a part of a tract of land as described in Volume 10, Page 564 of the Official Records of Athens County and being more particularly described as follows:

Commencing at a stone that is South ,1220.88 feet (deed) from the North-west corner of Section 11 Thence, along the West-line of Section 11, South 3 degrees 27 minutes 56 seconds West, 1122.00 feet to an iron pin set;

Thence, along the South -line of Guffy (270-1886 O.R.)

South 86 degrees 36 minutes 44 seconds East a distance of 307.23 feet to a mag-nail set in Antle Orchard Road, passing an iron pin set at 267.23 feet;

Thence, along said road:

South 13 degrees 24 minutes 16 seconds East a distance of 134.49 feet;

South 34 degrees 13 minutes 43 seconds East a distance of 167.45 feet;

South 27 degrees 24 minutes 20 seconds East a distance of 65.01 feet;

South 21 degrees 27 minutes 40 seconds East a distance of 189.84 feet;

South 42 degrees 39 minutes 30 seconds East a distance of 74.95 feet;

South 55 degrees 06 minutes 07 seconds East a distance of 103.16 feet;

South 60 degrees 25 minutes 17 seconds East a distance of 136.17 feet ;

South 60 degrees 18 minutes 54 seconds East a distance of 389.06 feet to a mag nail set and being the POINT OF BEGINNING for the tract of land herein described:

Thence, continuing along said road:

South 61 degrees 27 minutes 07 seconds East a distance of 83.93 feet;

South 78 degrees 46 minutes 48 seconds East a distance of 97.44 feet to a mag nail set;

North 89 degrees 04 minutes 21 seconds East a distance of 238.91 feet;

North 82 degrees 57 minutes 46 seconds East a distance of 80.22 feet;

North 76 degrees 33 minutes 56 seconds East a distance of 292.09 feet;

North 68 degrees 02 minutes 24 seconds East a distance of 169.41 feet;

North 61 degrees 55 minutes 58 seconds East a distance of 170.70 feet;

North 79 degrees 10 minutes 22 seconds East a distance of 51.17 feet;

North 83 degrees 51 minutes 26 seconds East a distance of 784.98 feet;

Thence, leaving said road and along the west-line of Standley (13- 230 O.R.)

South 01 degrees 08 minutes 38 seconds West a distance of 438.55 feet to an iron pin set at a fence corner, passing an iron pin set at 29.37 feet;

South 00 degrees 49 minutes 56 seconds West a distance of 473.85 feet to an iron pin set at a fence corner;

Thence, along the North-line of Buckingham Coal Co. (297-17 O.R),

North 86 degrees 51 minutes 13 seconds West a distance of 2014.78 feet;

Thence, North 12 degrees 11 minutes 07 seconds East a distance of 554.39 feet to a mag nail in Antle Orchard Road, passing an iron pin set at 528.29 feet to the point of beginning and containing 31.02 Acres

Subject to all easements and rights of way of record

Bearings Grid North N.A.D. 83

Iron pins set are 5/8"x30" long rebar with plastic I.D. Cap. stamped Branner P.S. 6805

The above description is based on a field survey completed April 2013 by John M. Branner P.S. 6805

Description Checked for
Mathematical Accuracy

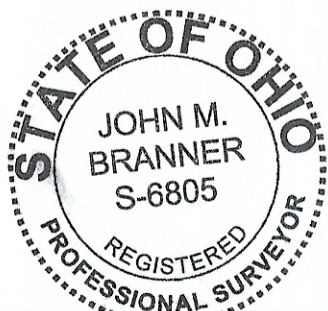
Athens County

ENGINEER'S OFFICE

BY: *C. Williams*

DATE: 4/30/13

John M. Branner



Description Approved
Jill A. Thompson 10-2-13
Athens County Auditor

Tract#5 (7.45 acres)

Situated in Section 11, T.11, R.14, Trimble Township, Athens County, Ohio and being a part of a tract of land as described in Volume 10, Page 564 of the Official Records of Athens County and being more particularly described as follows:

Commencing at a stone that is South , 1220.88 feet (deed) from the North-west corner of Section 11 Thence, along the West-line of Section 11, South 3 degrees 27 minutes 56 seconds West, 1122.00 feet to an iron pin set;

Thence, along the South -line of Guffy (270-1886 O.R.)

South 86 degrees 36 minutes 44 seconds East a distance of 307.23 feet to a Mag-nail set in Antle Orchard Road, passing an iron pin set at 267.23 feet;

Thence, along said road:

Thence, South 13 degrees 24 minutes 16 seconds East a distance of 134.49 feet;

Thence, South 34 degrees 13 minutes 43 seconds East a distance of 167.45 feet;

Thence, South 27 degrees 24 minutes 20 seconds East a distance of 65.01 feet;

Thence, South 21 degrees 27 minutes 40 seconds East a distance of 189.84 feet;

Thence, South 42 degrees 39 minutes 30 seconds East a distance of 74.95 feet;

Thence, South 55 degrees 06 minutes 07 seconds East a distance of 103.16 feet;

Thence, South 60 degrees 25 minutes 17 seconds East a distance of 136.17 feet to the POINT OF BEGINNING for the tract of land herein described:

Thence, along said road, South 60 degrees 18 minutes 54 seconds East a distance of 389.06 feet to a mag nail set;

Thence, leaving said road, South 12 degrees 11 minutes 07 seconds West a distance of 554.39 feet to an iron pin set in Grantor's South-line, passing an iron pin set at 26.10 feet;

Thence, along the North-line of Buckingham Coal Co. (297-17 O.R),

North 86 degrees 51 minutes 13 seconds West a distance of 615.02 feet

Thence, North 29 degrees 17 minutes 22 seconds East a distance of 803.54 feet to a point in Antle Orchard Road , passing an iron pin set at 775.23 feet; to the point of beginning and containing 7.45 Acres

Subject to all easements and rights of way of record

Bearings Grid North N.A.D. 83

Iron pins set are 5/8"x30" long rebar with plastic I.D. Cap. stamped Branner P.S. 6805

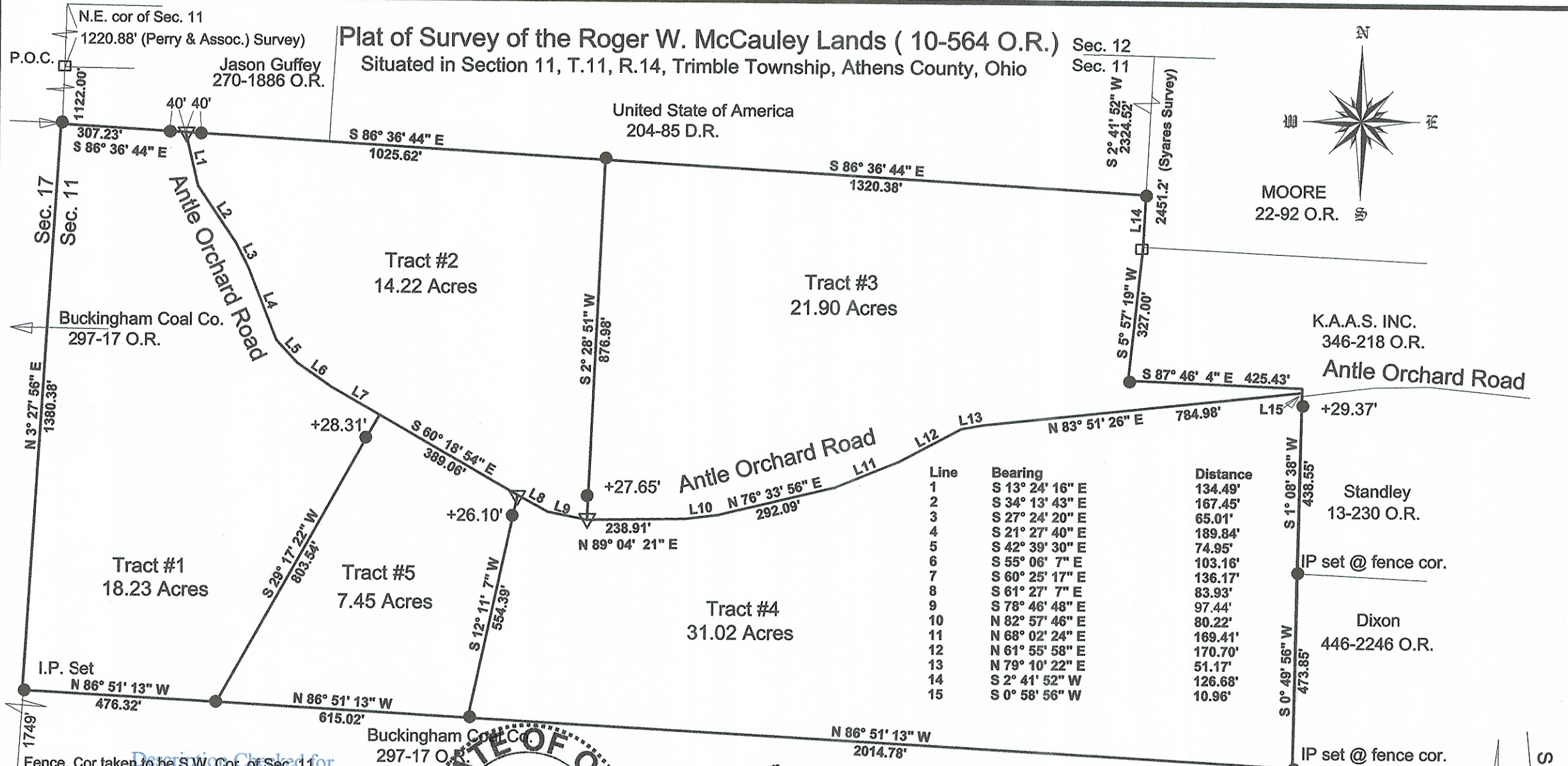
The above description is based on a field survey completed April 2013 by John M. Branner P.S. 6805



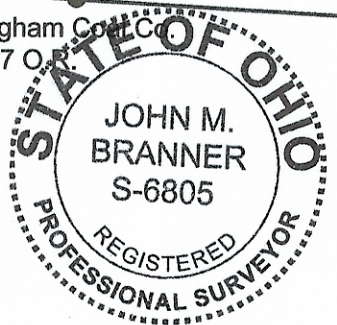
John M. Branner

Description Checked for
Mathematical Accuracy
Athens County
ENGINEER'S OFFICE
BY: *AMullerms*
DATE: 4/30/13

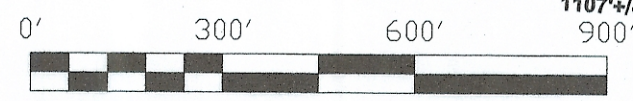
Plat of Survey of the Roger W. McCauley Lands (10-564 O.R.)
 Situated in Section 11, T.11, R.14, Trimble Township, Athens County, Ohio



Line	Bearing	Distance
1	S 13° 24' 16" E	134.49'
2	S 34° 13' 43" E	167.45'
3	S 27° 24' 20" E	65.01'
4	S 21° 27' 40" E	189.84'
5	S 42° 39' 30" E	74.95'
6	S 55° 06' 7" E	103.16'
7	S 60° 25' 17" E	136.17'
8	S 61° 27' 7" E	83.93'
9	S 78° 46' 48" E	97.44'
10	N 82° 57' 46" E	80.22'
11	N 68° 02' 24" E	169.41'
12	N 61° 55' 58" E	170.70'
13	N 79° 10' 22" E	51.17'
14	S 2° 41' 52" W	126.68'
15	S 0° 58' 56" W	10.96'



John M. Branner
John M. Branner P.S. 6805
 62 East First Street
 The Plains, Ohio 45780
 April 2013



Scale 1 inch = 300 feet
 Bearings: Grid North N.A.D. 83

● = Iron pin set 5/8"x30" long rebar
 □ = Stone fd.
 ▽ = mag.nail set
 Ref. Docs: Tax-Plat-Deeds- Perry Assoc. 02/01 survey
 Roman Survey 04-05-06 survey, Sayres 12/22/86 survey
 4/30/13

Division Created for
 Mathematical Accuracy
 Athens County

ENGINEER'S OFFICE
William Williams

S.R.#13