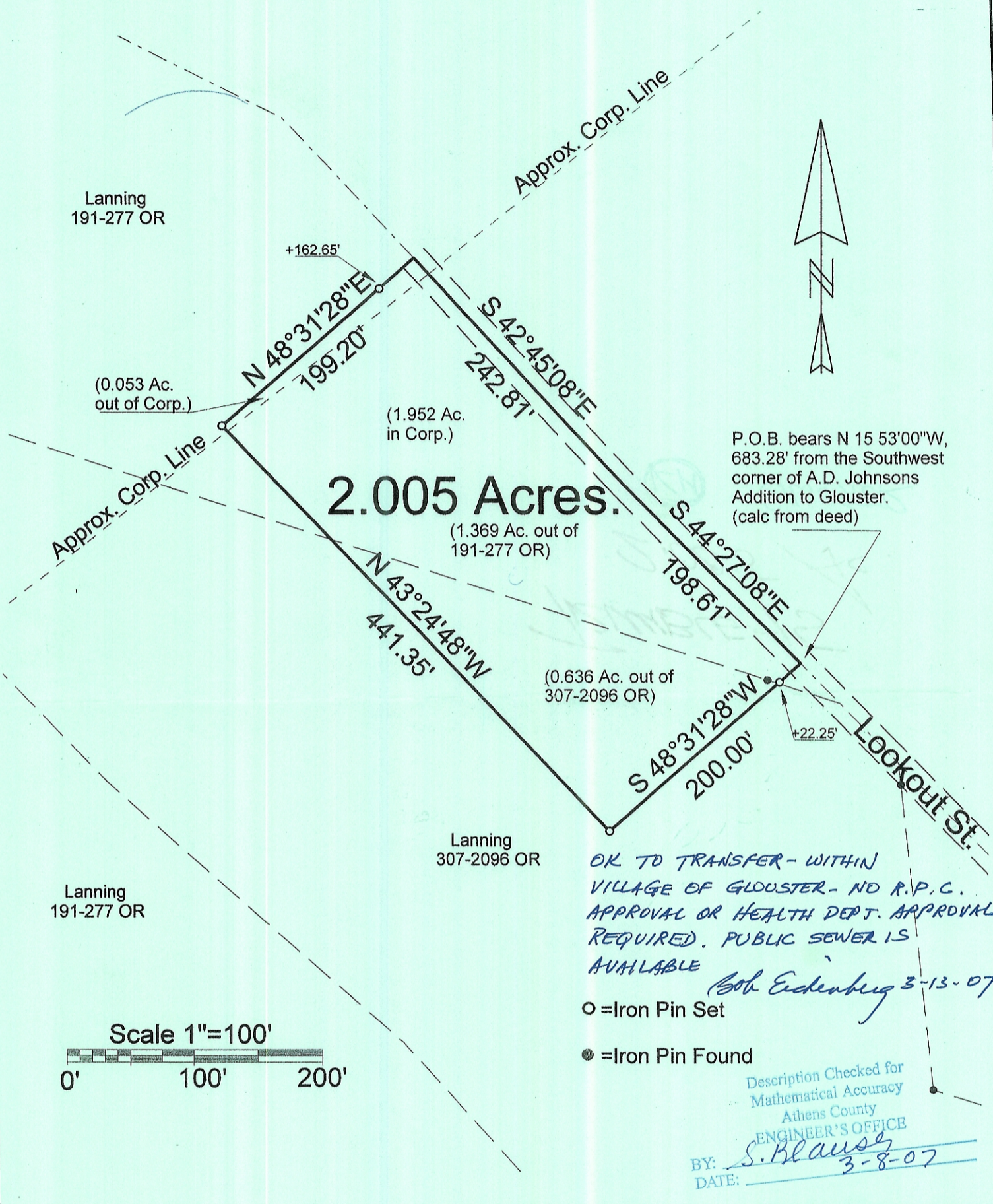


28 Lookout st
Glouster Ohio
45732



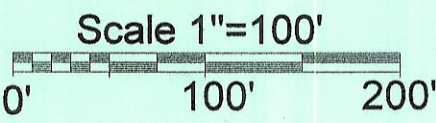
P.O.B. bears N 15 53'00"W,
683.28' from the Southwest
corner of A.D. Johnsons
Addition to Glouster.
(calc from deed)

OK TO TRANSFER - WITHIN
VILLAGE OF GLOUSTER - NO R.P.C.
APPROVAL OR HEALTH DEPT. APPROVAL
REQUIRED. PUBLIC SEWER IS
AVAILABLE

Bob Eidenberg 3-13-07

- = Iron Pin Set
- = Iron Pin Found

Description Checked for
Mathematical Accuracy
Athens County
ENGINEER'S OFFICE
BY: *S. Blause*
DATE: *3-8-07*



PLAT OF SURVEY OF A 2.005 Ac. TRACT
 SURVEYED FOR DOUG MULPAS
 SUBDIVISION -
 TOWNSHIP TRIMBLE SECTION 15 TOWN 11 RANGE 14
 CORPORATION GLOUSTER COUNTY ATHENS STATE OHIO
 SCALE 1" = 100 DATE MAR, 2007

Kenneth E. Highland
80 Fayette St.
Nelsonville, Ohio 45764
740-753-1264

Kenneth E. Highland
Kenneth E. Highland S-7581

