

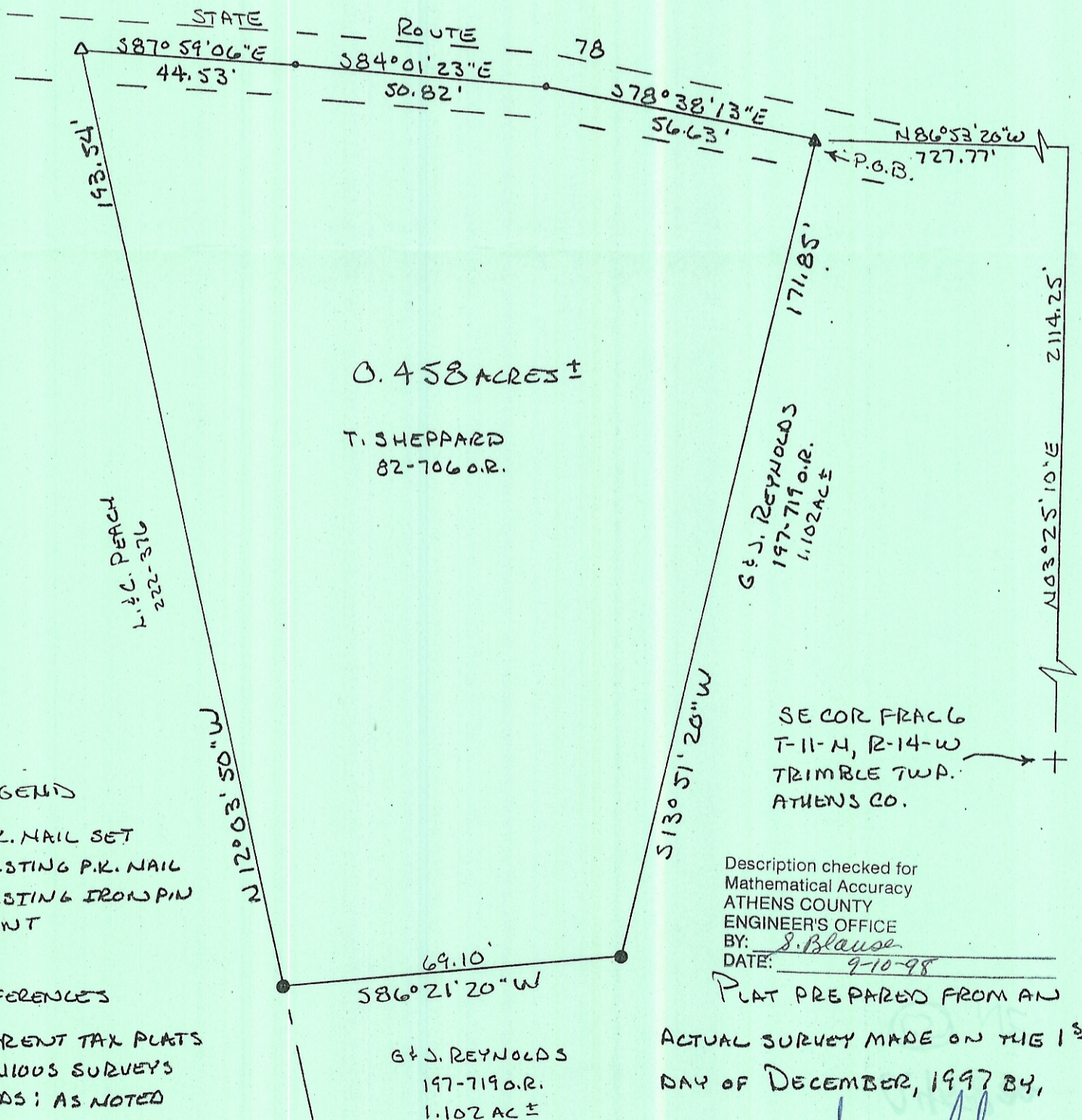
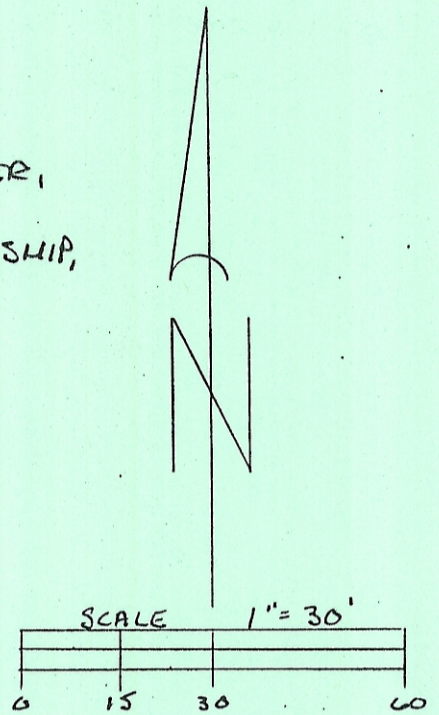


C. THOMAS SMITH and Associates Surveying

P. O. BOX 393
Racine, Ohio 45771

BEING A PART OF THE VILLAGE OF BLOUSTER,
FRACTION 6, T-11-N, R-14-W, TRIMBLE TOWNSHIP,
ATHENS COUNTY, STATE OF OHIO.

NOTE: BEARINGS WERE DERIVED FROM A PREVIOUS
SURVEY RECORDED IN OFFICIAL RECORDS VOL. 197 PG 719.



LEGEND

- ▲ - P.K. NAIL SET
- △ - EXISTING P.K. NAIL
- - EXISTING IRON PIN
- - POINT

REFERENCES

CURRENT TAX PLATS
PREVIOUS SURVEYS
DEEDS; AS NOTED

Description checked for
Mathematical Accuracy
ATHENS COUNTY
ENGINEER'S OFFICE
BY: S. Blause
DATE: 9-10-98

PLAT PREPARED FROM AN

ACTUAL SURVEY MADE ON THE 1ST
DAY OF DECEMBER, 1997 BY,

C. Thomas Smith

OHIO PROFESSIONAL SURVEYOR

No. 6844