



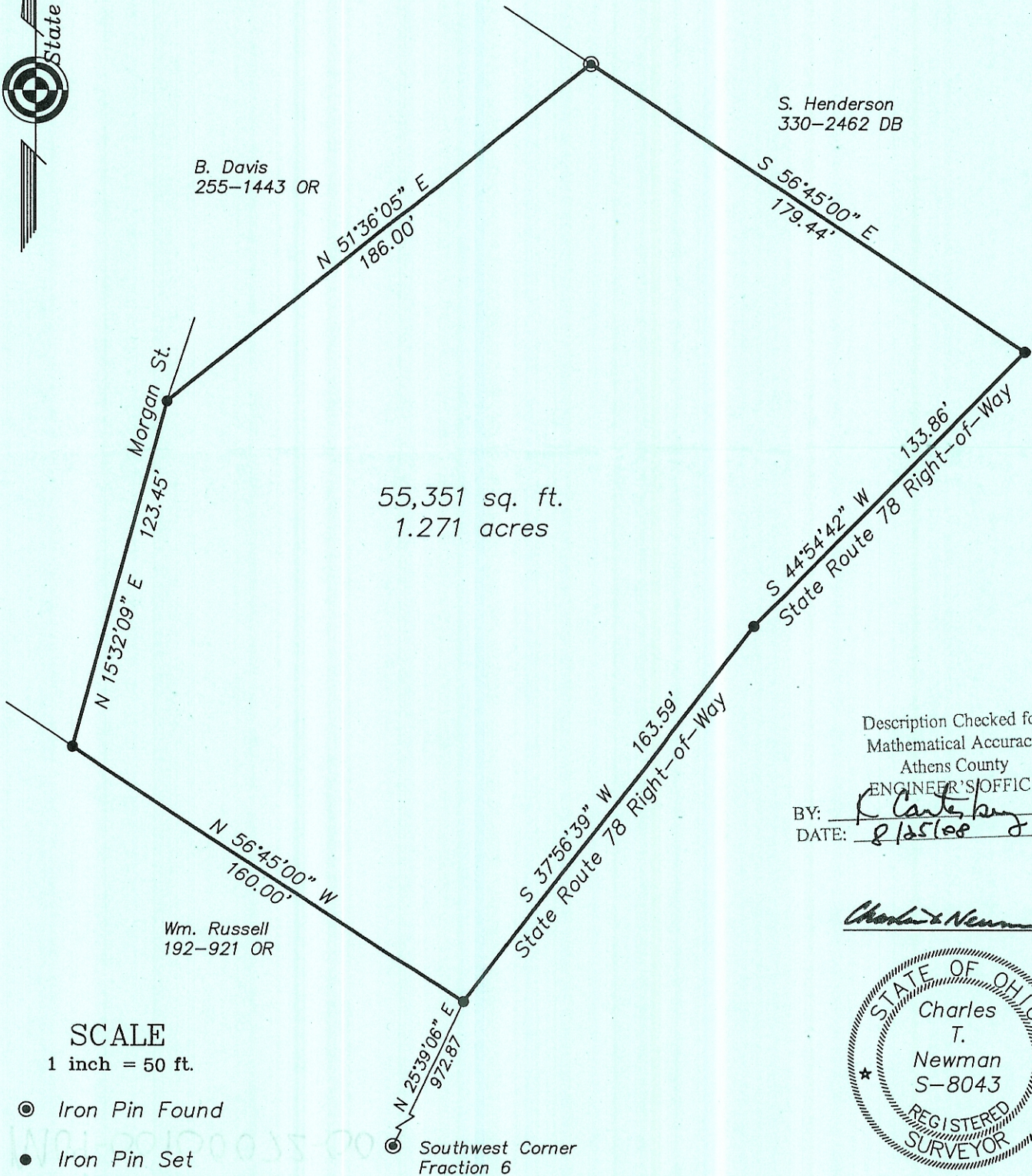
NEWMAN SURVEYING

66 Elmwood Place
Athens, Ohio 45701

740-594-1884
FAX 740-594-9413



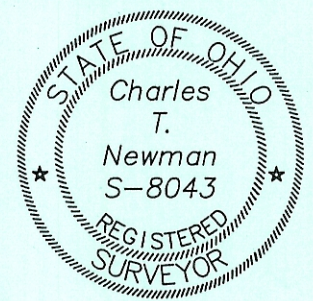
Plat of Survey 1.271 Acres ¹⁵
Situating in Fractional Section ~~8~~, Town 11, Range 14,
Village of Glouster, Trimble Township, Athens County, Ohio
Surveyed August 2008 for:
Joseph McCune



Description Checked for
Mathematical Accuracy
Athens County
ENGINEER'S OFFICE

BY: Charles T. Newman
DATE: 8/25/08

Charles T. Newman



SCALE

1 inch = 50 ft.

- ⊙ Iron Pin Found
- Iron Pin Set