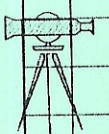


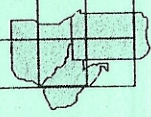
Seymour & Associates

830 West Hunter Street
Logan, Ohio 43138
740-385-4349
FAX: 740-385-5954



SURVEYING
ENGINEERING

email: seysurv@hocking.net



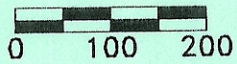
PLAT OF SURVEY

SITUATED IN THE STATE OF OHIO,
COUNTY OF ATHENS,
TRIMBLE TOWNSHIP,
LOCATED IN THE NE 1/4 OF
SECTION 2,
T-11-N, R-14-W



DATE:
4/12/05
DRAWN BY:
TJS
JOB #:
AT0505

FOR: Charles & Lola Reardon



SCALE:
1" = 200'

REFERENCES:

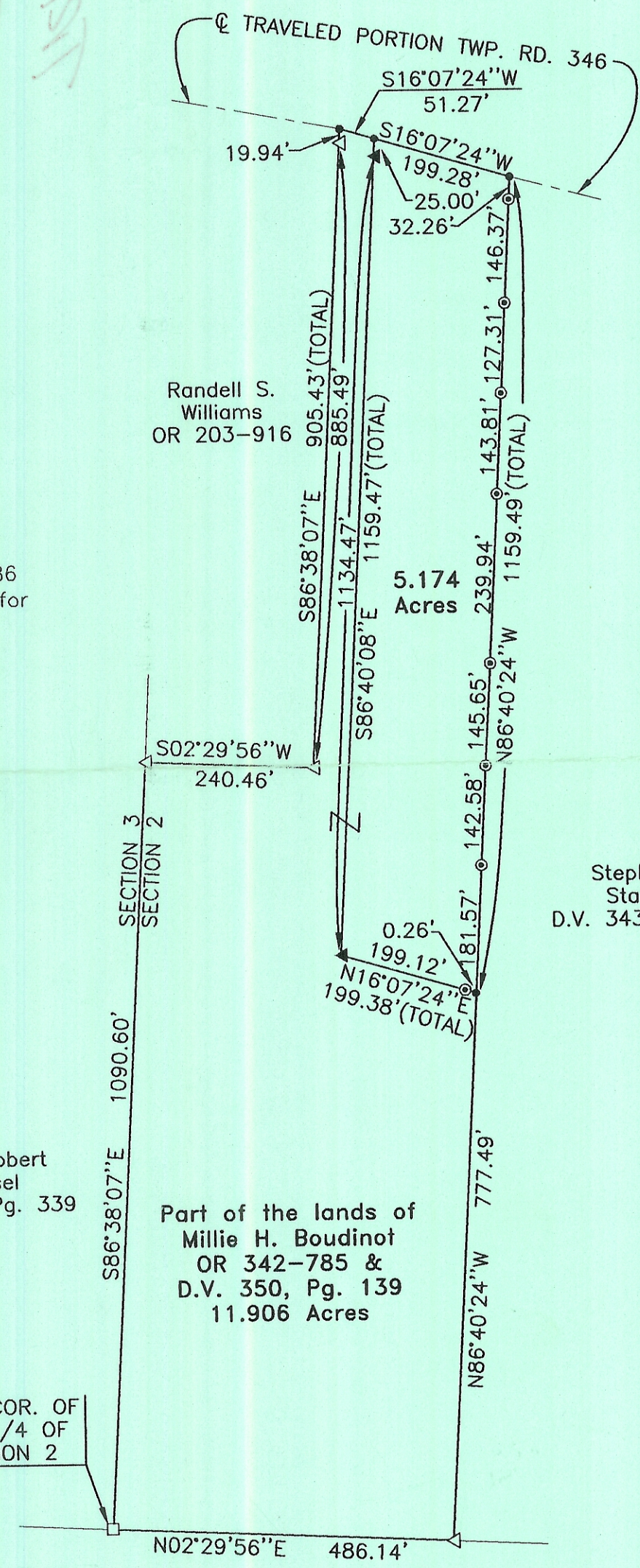
County tax maps
Deeds as noted
Previous surveys

BASIS OF BEARINGS:

Bearings derived from monumentation found on the North line of Section 2 as bearing South 86 degrees 38 minutes 07 seconds East and are for the determination of angles only.

LEGEND

- Point
- ▲ 5/8" x 30" iron pin with 1-1/4" plastic ID cap stamped SEYMOUR & ASSOC. set
- △ 5/8" iron pin with 1-1/4" plastic ID cap stamped L.F. Swoyer R.L.S. 6765 found
- ⊙ 5/8" iron pin found
- Stone found



Randell S. Williams
OR 203-916

5.174
Acres

Stephen R. Standley
D.V. 343, Pg. 461

John Robert Trussel
D.V. 12, Pg. 339

Part of the lands of
Millie H. Boudinot
OR 342-785 &
D.V. 350, Pg. 139
11.906 Acres

Description Checked for
Mathematical Accuracy
Athens County
ENGINEER'S OFFICE
BY: B. Blausch
DATE: 4-13-05

NW COR. OF
NE 1/4 OF
SECTION 2

Charles S. Vernon etal
D.V. 108, Pg. 412

I HEREBY CERTIFY THAT THIS PLAT WAS PREPARED FROM AN ACTUAL FIELD SURVEY OF THE PREMISES IN April OF 2005 AND FROM EXISTING PUBLIC RECORDS AND THAT SAID PLAT CORRECTLY SHOWS THE LIMITS OF THE PARCEL TO BE CONVEYED.

THIS CERTIFICATION WAS MADE BY ME ON THIS 12 DAY OF APRIL, 2005.

George F. Seymour

GEORGE F. SEYMOUR
OHIO PROFESSIONAL SURVEYOR NO. 6044