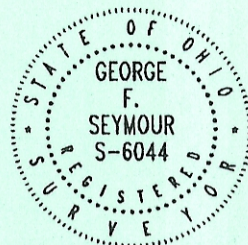


PROFESSIONAL LAND SURVEYORS

PLAT OF SURVEY



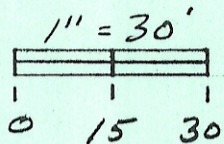
BEING VACATED LOTS 429 & 431 IN "SMOKERISE SUBDIVISION" SITUATED IN SECTION 35, TRIMBLE TOWNSHIP, T11N, R14W, ATHENS COUNTY STATE OF OHIO

DATE: JUNE 9 05
DRAWN BY: GFS
JOB #: AT9910

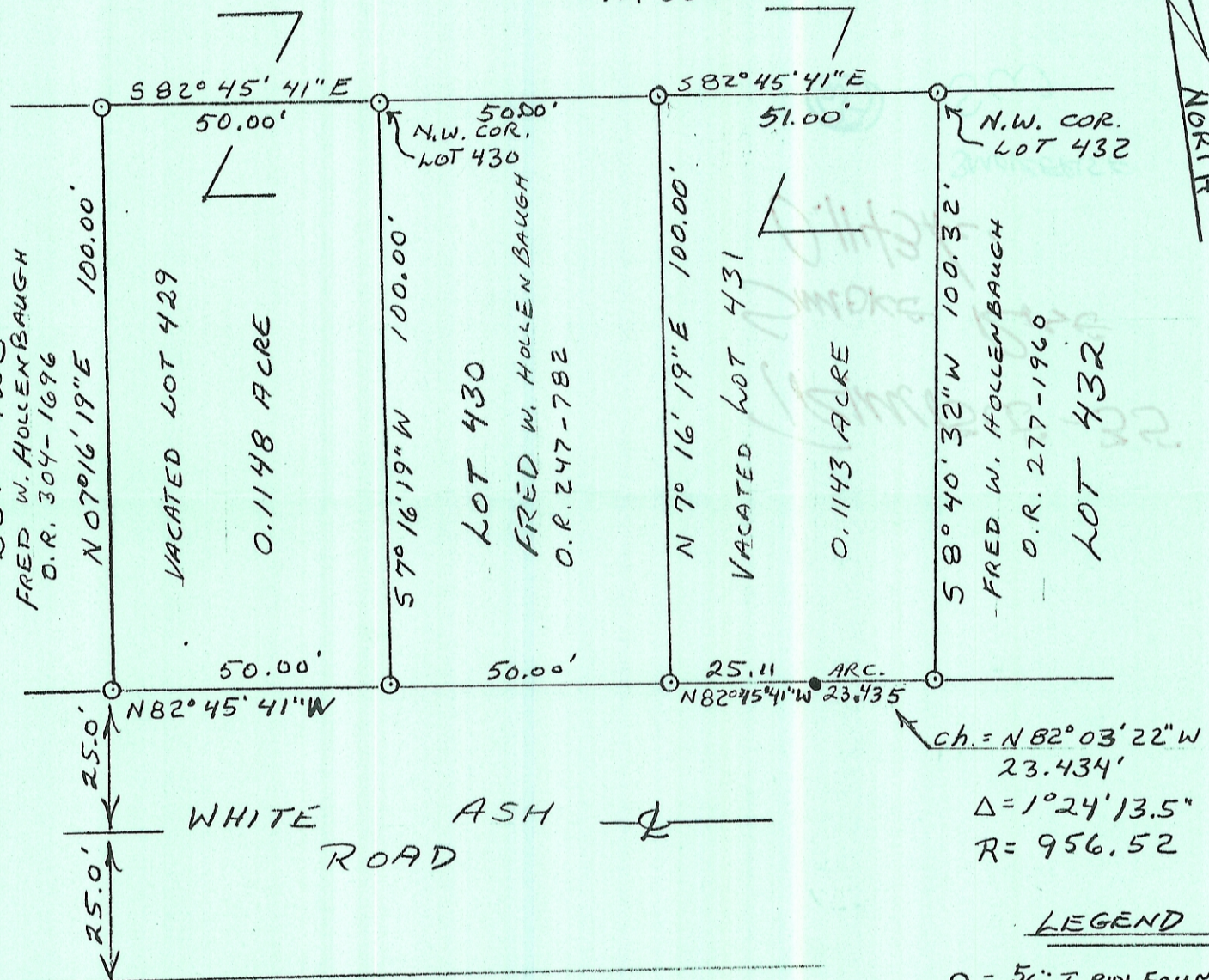
SEYMOUR & ASSOCIATES
P.O. Box 624
830 W. Hunter St. (740) 385-4349
Logan, Ohio 43138

FOR: FRED W. HOLLENBAUGH

SMOKERISE SUBDIVISION IS RECORDED IN PLAT CABINET #2 Pg 75-A



SEMINGSON ENTERPRISES INC
O.R. 368-88



LEGEND

- = 5/8" I.PIN FOUND
- = POINT

BEARINGS DERIVED FROM MONUMENTS FOUND ALONG THE NORTH LINE OF LOTS 428 THROUGH 432 OF "SMOKERISE SUBDIVISION" AS BEARING S 82° 45' 41" E AND ARE FOR THE DETERMINATION OF ANGLES ONLY.

REFERENCES

DEEDS AS NOTED
TAX PLATS
PREVIOUS SURVEYS

Approved by the Athens County Regional Planning Commission; No plat Required"

Description Checked for Mathematical Accuracy Athens County ENGINEER'S OFFICE

BY: B. Blum Date: 6-13-05

Transfer between adjoining owners. No building site intended. Health Dept. approval is not required.

I HEREBY CERTIFY THAT THIS PLAT WAS PREPARED FROM AN ACTUAL FIELD SURVEY OF THE PREMISES IN MAY OF 2005 AND FROM EXISTING PUBLIC RECORDS AND THAT SAID PLAT CORRECTLY SHOWS THE LIMITS OF THE PARCEL TO BE CONVEYED.

THIS CERTIFICATION WAS MADE BY ME ON THIS 8 DAY OF JUNE, 2005

George F. Seymour

GEORGE F. SEYMOUR
OHIO PROFESSIONAL SURVEYOR NO. 6044