

EXHIBIT A

DESCRIPTION OF A 2.53 ACRE TRACT

Situated in Section 7, T.11, R.14, Trimble Township, Athens County, Ohio and being more particularly described as follows:

Beginning at a railroad spike found at the South-east corner of a 0.85 acre tract in County road 27 and bearing South 13 Degrees 37 Minutes East, 503.12 feet from the South-east corner of Inlot 137 of the Village of Jacksonville,

thence, along County Road 27, South 6 degrees 05 minutes 00 seconds East, a distance of 233.70 feet to a point;

thence, leaving said road, South 89 degrees 46 minutes 38 seconds West, a distance of 197.86 feet to an iron pin set, passing an iron pin set at 30.87 feet;

thence North 72 degrees 47 minutes 00 seconds West, a distance of 471.41 feet to an iron pin set;

thence North 4 degrees 02 minutes 33 seconds East, a distance of 73.25 feet to an iron pin set;

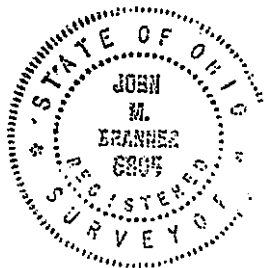
thence North 88 degrees 01 minute 36 seconds East, a distance of 456.86 feet to an iron pin found at the South-east corner of a 5.736 acre tract;

thence North 88 degrees 21 minutes 28 seconds East, a distance of 19.01 feet;

thence North 88 degrees 17 minutes 00 seconds East, a distance of 142.70 feet, (passing an iron pin found at 120.35 feet) to the POINT OF BEGINNING; said described tract containing 2.532 acres.

Subject to all easements and rights of way of record.

The above description is based on a field survey completed February 1, 1995 by John M. Branner P.S. 6805

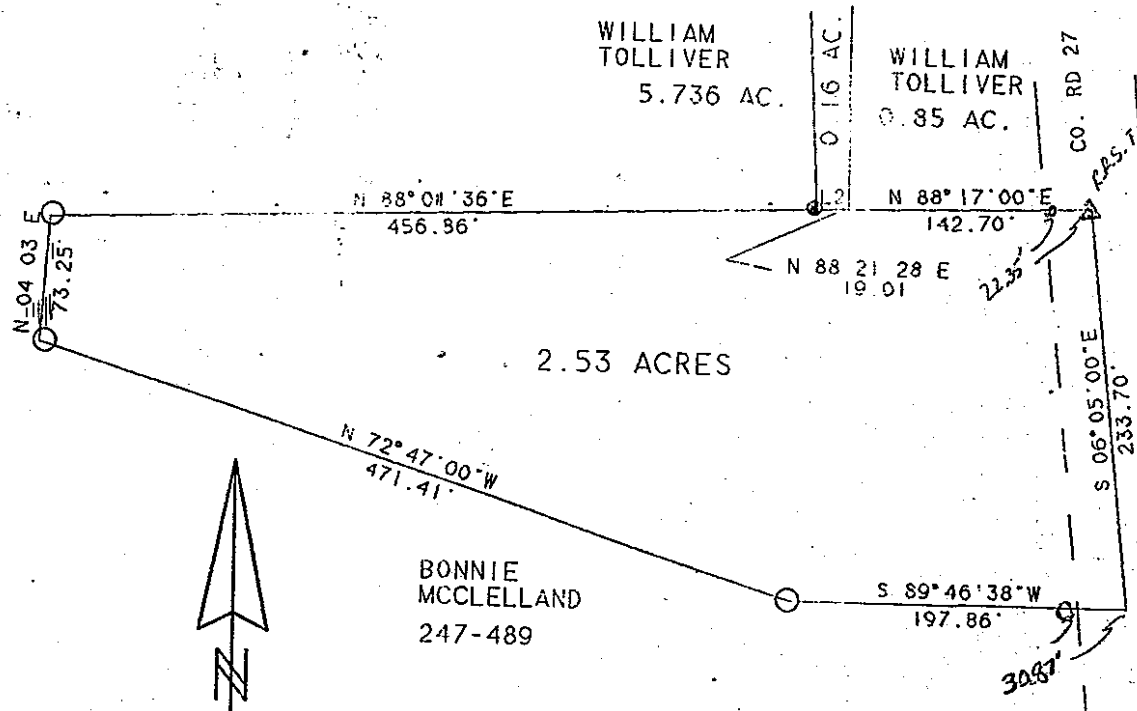


*John M. Branner*

Description checked for  
Mathematical Accuracy  
ATHENS COUNTY  
ENGINEER'S OFFICE  
BY: *H. Gane*  
DATE: 2/22/95

VOL. 194 PAGE 556

Vol. 194 p. 557



P.O.B. BEARS S13°37'E, 503.12'  
 FROM S.E. COR. OF  
 IN LOT 137 VILLAGE OF JACKSONVILLE



SCALE 1 INCH = 100 FEET  
 ○ - IRON PIN SET  
 ● - IRON PIN FOUND

SURVEY OF A 2.53 ACRE TRACT  
 IN SECTION 7. T.11. R.14.  
 TRIMBLE TOWNSHIP. ATHENS CO. OH.

SURVEYED FEB. 1995  
*John M. Branner*  
 JOHN M. BRANNER P.S. 6805  
 12500 N. PEACH RIDGE ROAD  
 ATHENS, OHIO 592-5778

