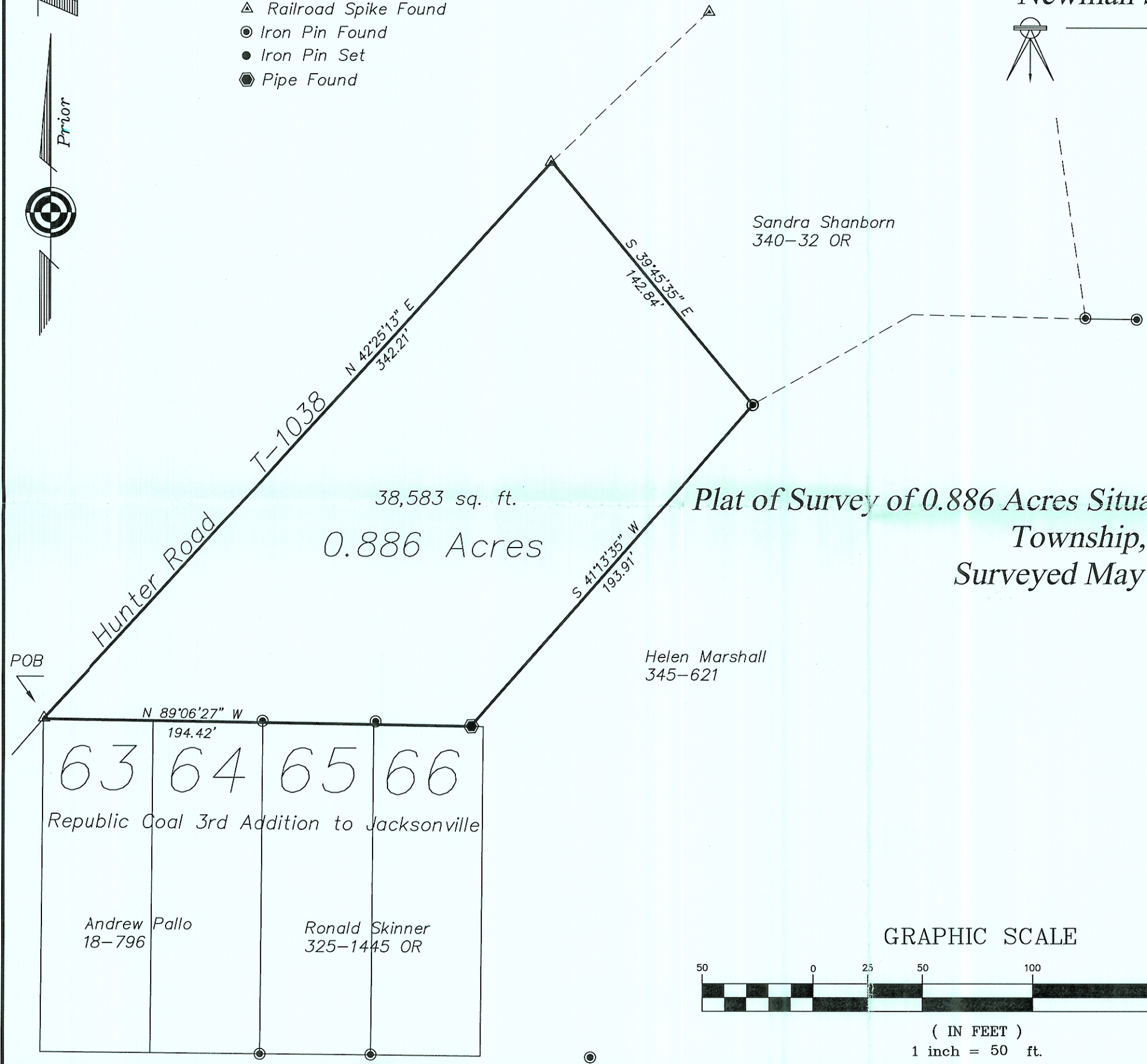


- △ Railroad Spike Found
- Iron Pin Found
- Iron Pin Set
- Pipe Found

Newman Surveying Services

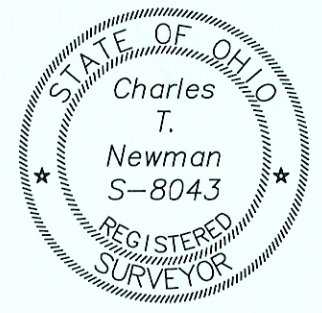


66 Elmwood Place
Athens, Ohio 45701
740-594-1884
FAX 740-594-9413



Plat of Survey of 0.886 Acres Situated in Section 7, Town 11, Range 14, Trimble Township, Athens County, Ohio
Surveyed May 2007 for: Resource Title

Charles T. Newman
Charles T. Newman



Description Checked for
Mathematical Accuracy
Athens County
ENGINEER'S OFFICE
BY: *S. Blause*
DATE: *6-6-07*

