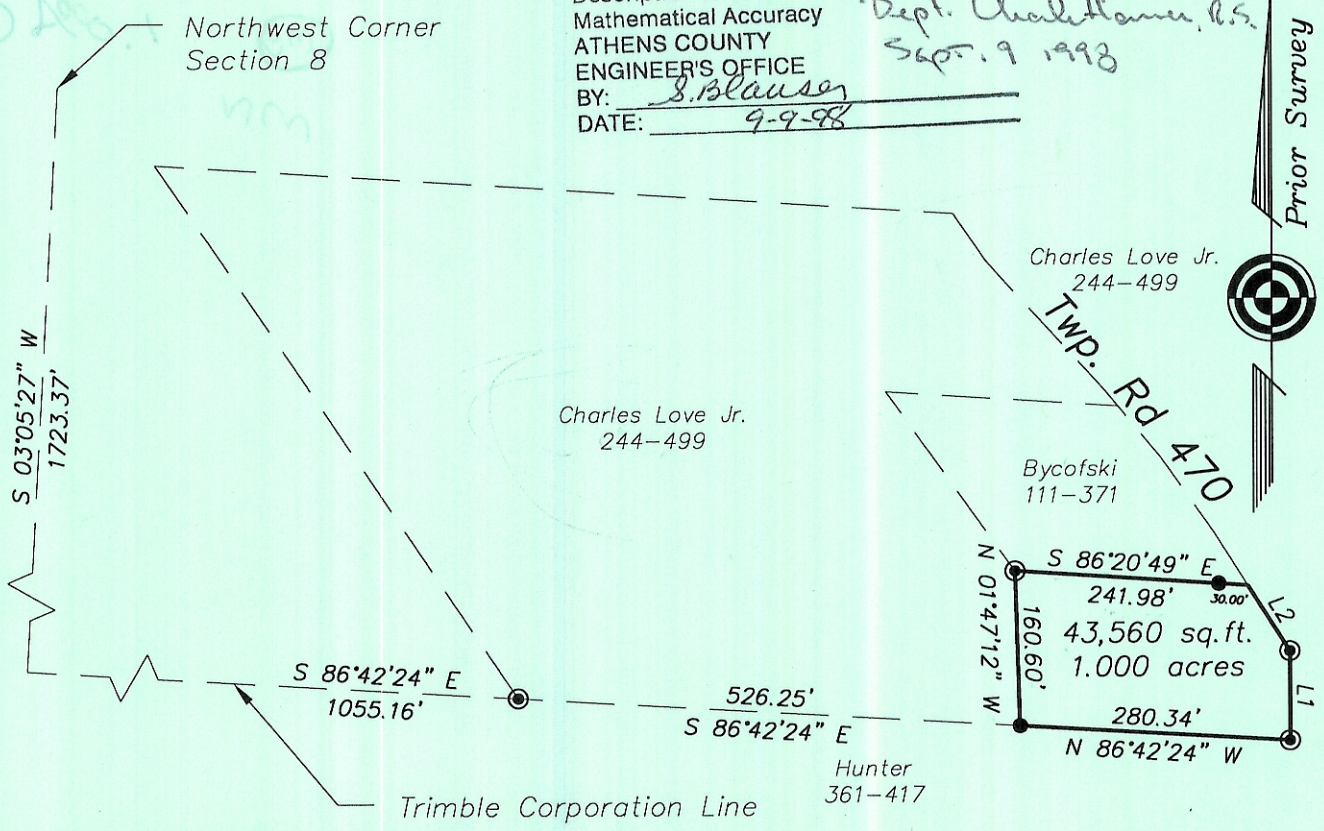


Description checked for
Mathematical Accuracy
ATHENS COUNTY
ENGINEER'S OFFICE
BY: S. Blausey
DATE: 9-9-98

1.0000 acre
OK. TO TRANSFER
per Athens City-Co Health
Dept. Charles H. H. S.
Sept. 9 1998

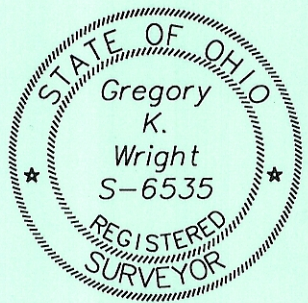


LINE TABLE		
LINE	LENGTH	BEARING
L1	92.90	S00°03'33\"E
L2	80.87	S32°22'22\"E

Note:
Frontage at Right-of-way
150.12 feet.

- ⊙ = Iron Pin Found
- = Iron Pin Set

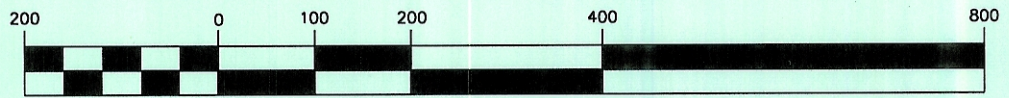
Plat of Survey of 1.000 Acres
Situated in Section 8, Town 11, Range 14,
Trimble Township, Athens County, Ohio
Surveyed 9-4-1998 for:
Charles Love Jr.



Gregory K. Wright
Gregory K. Wright

Gregory K. Wright
Professional Engineer
Professional Surveyor
11684 Channingway Blvd
The Plains, Ohio 45780
740-797-4142
FAX 740-797-8623

GRAPHIC SCALE



(IN FEET)
1 inch = 200 ft.