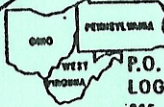


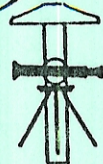
PROFESSIONAL LAND SURVEYORS

- BUILDING PLANS
- LOTS & FARM SURVEYS
- SUB-DIVISIONS
- LAND PLANNING
- CONSTRUCTION

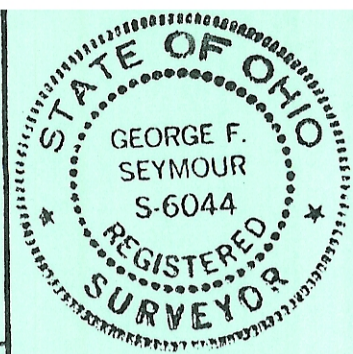
SEYMOUR & ASSOCIATES



P.O. BOX 624
LOGAN, OHIO 43138
385-5954

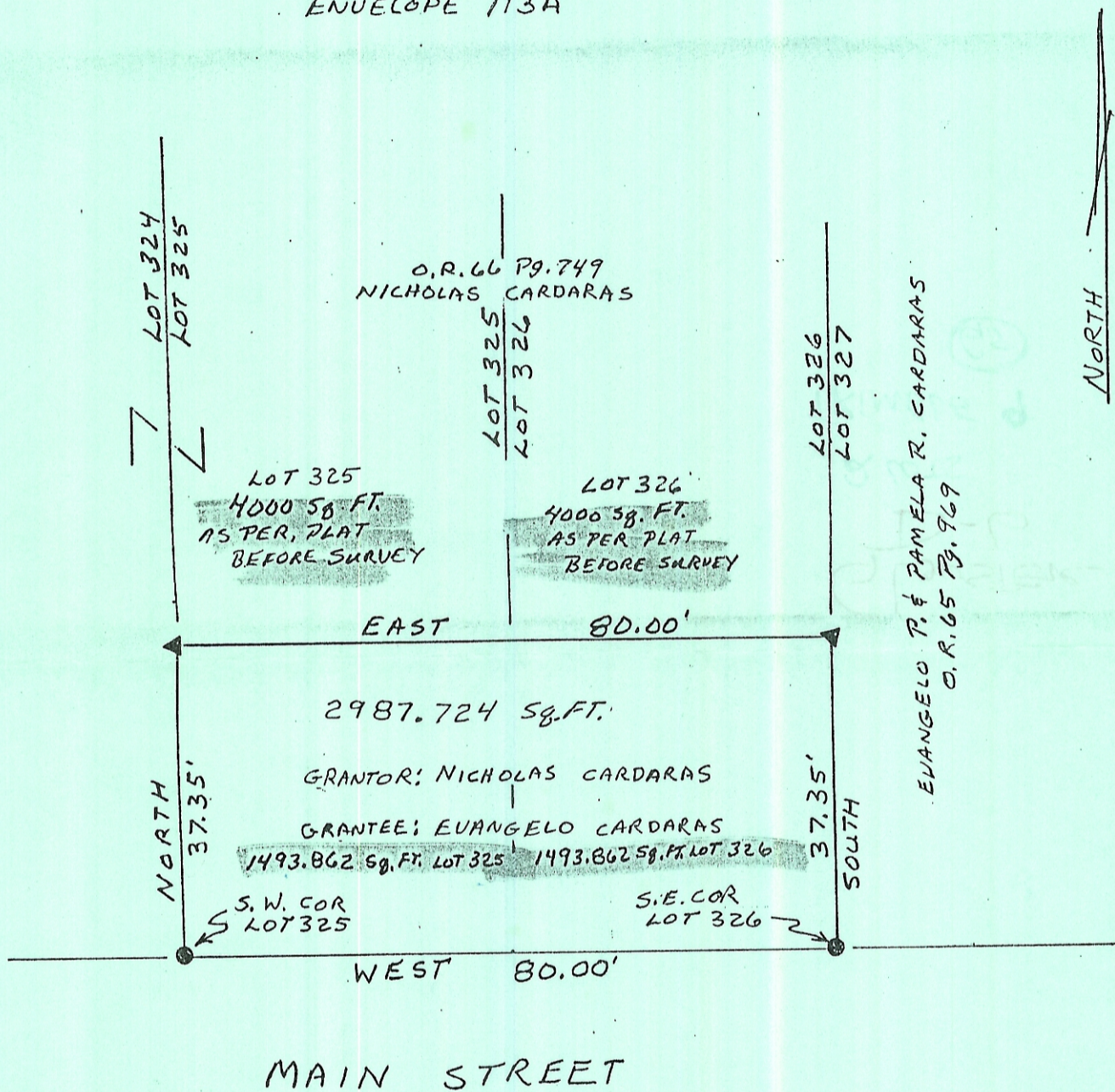
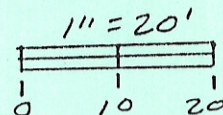


PART OF LOTS 325 & 326 IN
"WRIGHT'S 2ND ADDITION" TO
TOWN OF SADALIA SITUATED IN
THE VILLAGE OF GLOUSTER,
TRIMBLE TOWNSHIP
SECTION 9, T11N, R14W,
ATHENS COUNTY
STATE OF OHIO



SURVEY FOR: EVANGELO CARDARAS
JOB # AT9615

"WRIGHT'S 2ND ADDITION"
RECORDED IN P.B. 2 PG. 37 &
ENVELOPE 113A



REFERENCES

- DEEDS AS NOTED
- TAX PLATS
- PREVIOUS SURVEYS

LEGEND

- ▲ = 5/8" I.P.I.N W/ PLASTIC I.D. CAP SET STAMPED "SEYMOUR & ASSOC."
- = P.K. NAIL SET

NOTE: BEARINGS DERIVED FROM MONUMENTATION FOUND ON NORTH LINE OF MAIN STREET AS BEARINGS DUE EAST-WEST AND ARE FOR DETERMINATION OF ANGLES ONLY.

PLAT PREPARED FROM SURVEY MADE
JULY 27TH 1996 BY

George F. Seymour
PROFESSIONAL SURVEYOR NO. 6044