

Plat of Survey of 0.104 Acres
 Situated in Lots 716, 717 and 718 of
 J. R Allen's Addition to Glouster,
 Trimble Township, Athens County, Ohio
 Surveyed May 2005 for:
 Everett Holmes

Charles T. Newman
 Charles T. Newman

Nicholas Milhoan
 343-257

Robert & Martha Funk
 298-592

Joan Holmes
 369-441

Joan Holmes
 369-441

Joan Holmes
 369-441

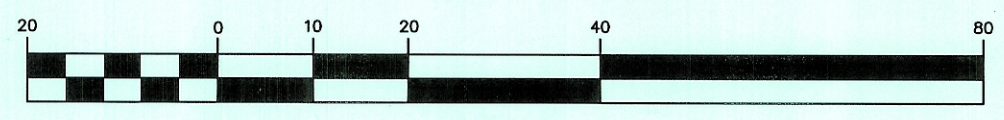
Joan Holmes
 369-441

Description Checked for
 Mathematical Accuracy
 Athens County
 ENGINEER'S OFFICE
 BY: *S. Blause*
 DATE: *5-23-05*

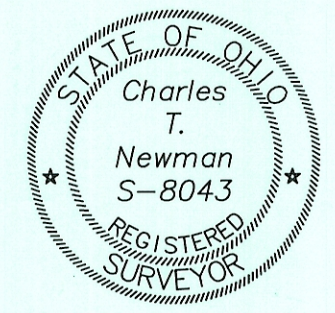
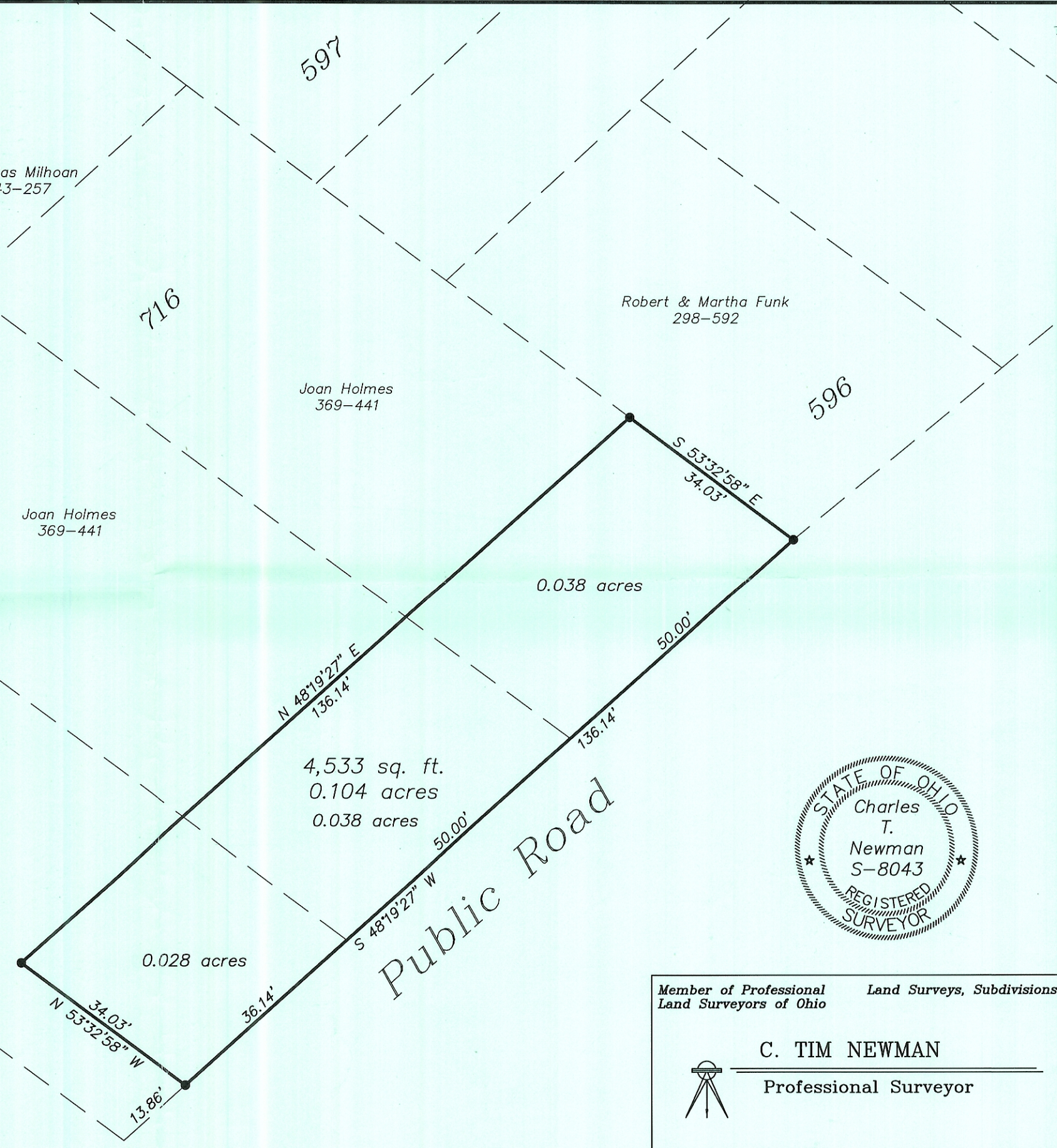
Joan Holmes
 369-441

- ⊙ = Iron Pin Found
- = Iron Pin Set

GRAPHIC SCALE



(IN FEET)
 1 inch = 20 ft.



Member of Professional Land Surveyors of Ohio Land Surveys, Subdivisions

C. TIM NEWMAN
 Professional Surveyor

66 Elmwood Place Athens, Ohio 45701 740-594-1884 FAX 740-594-9413