

L E G A L   D E S C R I P T I O N

Situated in the State of Ohio, County of Athens, Township of Troy, Section 11, Town 5, Range 11 and being more fully described as follows:

Beginning at a STONE FD. at the Southeast corner of the Northeast quarter of Section 11, Town 5, Range 11;

THENCE South 89 degrees 30 minutes 21 seconds West for a distance of 816.00 feet to a IRON PIN SET and being the TRUE PLACE OF BEGINNING;

THENCE North 03 degrees 00 minutes 40 seconds East for a distance of 331.36 feet to a IRON PIN SET;

THENCE North 69 degrees 38 minutes 40 seconds West for a distance of 591.07 feet to a POINT in of County Road 62 and passing Iron pins set at 300.00 feet and 30.00 feet distant;

THENCE South 00 degrees 16 minutes 22 seconds East for a distance of 541.11 feet to a POINT in said road;

THENCE North 89 degrees 30 minutes 21 seconds East for a distance of 534.20 feet to a IRON PIN SET and being the TRUE PLACE OF BEGINNING and passing Iron pipes fd at 26.794 feet and 212.07 feet distant.

Containing 5.46 acres more or less.

Survey and description by Karl Wm. Zartman Jr. P.S. 7614

Subject to all easements, leases, right of ways, conditions and restrictions of record.

Prior instrument reference: Vol. 55 Page 439; Vol. 186 Page 595; Vol. 232 Pages 292, 295, 298; Vol. 173 Page 32.

Description checked for  
Mathematical Accuracy  
ATHENS COUNTY  
ENGINEER'S OFFICE  
BY: S. Blausen  
DATE: 5-30-97



20

TAY #11

L E G A L   D E S C R I P T I O N

Situated in the State of Ohio, County of Athens, Township of Troy, Section 11, Town 5, Range 11 and being more fully described as follows:

Beginning at a STONE FD. at the Southeast corner of the Northeast quarter of Section 11, Town 5, Range 11;

THENCE South 89 degrees 30 minutes 21 seconds West for a distance of 1350.2 feet to a POINT in County Road 62;

THENCE North 00 degrees 16 minutes 22 seconds West for a distance of 541.11 feet to a POINT in County Road 62 and being the TRUE PLACE OF BEGINNING;

THENCE South 69 degrees 38 minutes 40 seconds East for a distance of 291.07 feet to a IRON PIN SET and passing an Iron pin set at 30.00 feet distant;

THENCE North 02 degrees 57 minutes 41 seconds East for a distance of 768.72 feet to a POINT IN THE CENTERLINE of Township Road 178 and passing an Iron pin set at 748.72 feet distant;

THENCE North 67 degrees 13 minutes 13 seconds West for a distance of 205.74 feet to a POINT IN THE CENTERLINE of said Road;

THENCE North 83 degrees 24 minutes 26 seconds West for a distance of 127.39 feet to a POINT NEAR THE INTERSECTION of Township 178 and County Road 62;

THENCE South 00 degrees 16 minutes 22 seconds East for a distance of 760.74 feet to a POINT in County Road 62 and being the TRUE PLACE OF BEGINNING;

Said property contains 5.29 acres more or less.

Survey and description by Karl Wm. Zartman Jr. P.S. 7614

Subject to all easements, leases, right of ways, condition, and restrictions of record.

Prior instrument reference: Vol. 55 Page 439; Vol. 186 Page 595; Vol. 232 Pages 292, 295, 298; Vol. 173 Page 32.

Description checked for  
Mathematical Accuracy  
ATHENS COUNTY  
ENGINEER'S OFFICE  
BY: J. Blauer  
DATE: 5-30-97



L E G A L   D E S C R I P T I O N

Situated in the State of Ohio, County of Athens, Township of Troy, Section 11, Town 5, Range 11 and being more fully as follows:

Beginning at a STONE FD. at the Southeast corner of the Northeast quarter of Section 11, Town 5, Range 11;

THENCE South 89 degrees 30 minutes 21 seconds West for a distance of 816.00 feet to a IRON PIN SET;

THENCE North 03 degrees 00 minutes 40 seconds East for a distance of 331.36 feet to a IRON PIN SET and being the TRUE PLACE OF BEGINNING;

THENCE North 03 degrees 00 minutes 40 seconds East for a distance of 755.00 feet to a POINT IN THE CENTERLINE of Township Road 178 and passing an Iron pin set at 1066.36 feet distant;

THENCE North 67 degrees 13 minutes 13 seconds West for a distance of 305.00 feet to a POINT IN THE CENTERLINE of said road;

THENCE South 02 degrees 57 minutes 41 seconds West for a distance of 768.72 feet to a IRON PIN SET and passing an Iron pin set at 20.00 feet distant;

THENCE South 69 degrees 38 minutes 40 seconds East for a distance of 300.00 feet to a IRON PIN SET and being the TRUE PLACE OF BEGINNING.

Containing 5.01 acres more or less.

Survey and description by Karl WM. Zartman Jr. P.S. 7614

Subject to all easements, leases, right of ways, conditions and restrictions of record.

Prior instrument reference: Vol. 55 Page 439; Vol. 186 Page 595; Vol. 232 Pages 292, 295, 298; Vol. 173 Page 32.

Description checked for  
Mathematical Accuracy  
ATHENS COUNTY  
ENGINEER'S OFFICE  
BY: S. Blausch  
DATE: 5-30-97



LEGAL DESCRIPTION

TA

Situated in the State of Ohio, County of Athens, Township of Troy, Section 11, Town 5, Range 11 and being more fully described as follows:

Beginning at a STONE FD. at the Southeast corner of the Northeast quarter of Section 11, Town 5, Range 11;

THENCE South 89 degrees 30 minutes 21 seconds West for a distance of 521.00 feet to an IRON PIN SET and being the TRUE PLACE OF BEGINNING;

THENCE North 02 degrees 04 minutes 11 seconds East for a distance of 968.34 feet to a POINT IN THE CENTERLINE of Township Road 178;

THENCE North 67 degrees 13 minutes 13 seconds West for a distance of 295.98 feet to a POINT IN THE CENTERLINE of said Road;

THENCE South 03 degrees 00 minutes 40 seconds West for a distance of 1086.36 feet to a IRON PIN SET and passing Iron pins set at 20.00 feet and 755.00 feet distant;

THENCE North 89 degrees 30 minutes 21 seconds East for a distance of 295.00 feet to a IRON PIN SET and being the TRUE PLACE OF BEGINNING;

Containing 6.75 acres more or less.

Survey and description by Karl Wm. Zartman Jr. P.S. 7614

Subject to all easements, leases, right of ways, conditions and restrictions of record.

Prior instrument reference: Vol. 55 Page 439; Vol. 186 Page 595; Vol. 232 Pages 292, 295, 298; Vol. 173 Page 32.

Description checked for  
Mathematical Accuracy  
ATHENS COUNTY  
ENGINEER'S OFFICE  
BY: S. Blauder  
DATE: 5-30-97



L E G A L   D E S C R I P T I O N

Sitiated in the State of Ohio, County of Athens, Township of Troy, Section 11, Town 5, Range 11 and being more fully described as follows:

Beginning at a STONE FD. at the Southeast corner of the Northeast quarter Section 11, Town 5, Range 11;

THENCE South 89 degrees 30 minutes 21 seconds West for a distance of 280.00 feet to a IRON PIN SET and being the TRUE PLACE OF BEGINNING;

THENCE North 01 degrees 36 minutes 50 seconds East for a distance of 869.18 feet to a POINT IN THE CENTERLINE of Township Road 178 and passing a Iron pin set at 848.18 feet distant;

THENCE North 67 degrees 13 minutes 13 seconds West for a distance of 250.00 feet to a POINT IN THE CENTERLINE of said Road;

THENCE South 02 degrees 04 minutes 11 seconds West for a distance of 968.34 feet to a IRON PIN SET and passing a Iron pin set at 20.00 feet distant;

THENCE North 89 degrees 30 minutes 21 seconds East for a distance of 241.00 feet to a IRON PIN SET and being the TRUE PLACE OF BEGINNING;

Containing 5.002 acres more or less.

Survey and description by Karl Wm. Zartman Jr. P.S. 7614

Subject to all easements, leases, right of ways, conditions and restrictions of record.

Prior instrument reference: Vol. 55 Page 439; Vol. 186 Page 595; Vol. 232 Pages 292, 295, 298; Vol. 173 Page 32.

Description checked for  
Mathematical Accuracy  
ATHENS COUNTY  
ENGINEER'S OFFICE  
BY: S. Blausa  
DATE: 5-30-97



L E G A L   D E S C R I P T I O N

Situated in the State of Ohio, County of Athens, Township of Troy, Section 11, Town 5, Range 11 and being more fully described as follows:

Beginning at a STONE FD. at the Southeast corner of the Northeast quarter of Section 11, Town 5, Range 11 and being the TRUE PLACE OF BEGINNING;

THENCE North 00 degrees 14 minutes 34 seconds West for a distance of 770.97 feet to a POINT IN THE CENTER LINE OF TOWNSHIP ROAD 178 and passing a iron pin fd. at 28.72 feet distant;

THENCE North 72 degrees 51 minutes 37 seconds West for a distance of 98.19 feet to a POINT IN THE CENTER LINE of said road;

THENCE North 67 degrees 13 minutes 13 seconds West for a distance of 171.81 feet to a POINT IN THE CENTER LINE of said road;

THENCE South 01 degrees 36 minutes 50 seconds West for a distance of 869.18 feet to a IRON PIN SET and passing a iron pin set at 20.00 feet distant;

THENCE North 89 degrees 30 minutes 21 seconds East for a distance of 280.00 feet to a STONE FD. and being the TRUE PLACE OF BEGINNING.

Said property contains 5.001 acres more or less.

Survey and description by Karl Wm. Zartman Jr. P.S.7614

Subject to all right of ways, leases, easements, conditions and restrictions of record.

Prior instrument references Vol.55 Page 439; Vol.186 Page 595, Vol.232 Pages 292,295,298



Description checked for  
Mathematical Accuracy  
ATHENS COUNTY  
ENGINEER'S OFFICE  
BY: S. Blanton  
DATE: 5-30-97

L E G A L   D E S C R I P T I O N

Situated in the State of Ohio, County of Athens, Township of Troy, Section 11, Town 5, Range 11 and being more fully described as follows:

Beginning at a 36' white oak stump with a R.R. SPIKE IN CENTER, and being the Northeast corner of the Northeast quarter of Section 11, Town 5, Range 11 and being the TRUE PLACE OF BEGINNING;

THENCE South 89 degrees 13 minutes 44 seconds West for a distance of 1351.68 feet to a IRON PIN SET at the Northwest corner of the East half of the Northeast quarter of said Section;

THENCE South 00 degrees 16 minutes 22 seconds East for a distance of 1144.76 feet to a POINT IN COUNTY ROAD 62 and said point on the West line of the East half of the Northeast quarter of said Section;

THENCE South 84 degrees 12 minutes 22 seconds East for a distance of 278.09 feet to a IRON PIN SET and passing a iron pin set at 20 feet distant;

THENCE South 01 degrees 43 minutes 01 seconds West for a distance of 349.99 feet to a POINT IN THE CENTERLINE of Township Road 178 and passing a iron pin fd at            feet distant;

THENCE South 67 degrees 13 minutes 13 seconds East for a distance of 1078.65 feet to a POINT IN THE CENTERLINE of said road;

THENCE South 72 degrees 51 minutes 37 seconds East for a distance of 98.19 feet to a POINT IN THE CENTERLINE of said road;

THENCE North 00 degrees 14 minutes 34 seconds West for a distance of 1987.44 feet to a 36' WHITE OAK STUMP at the TRUE PLACE OF BEGINNING and passing iron pins fd at 31.29 feet and 1145.86 feet distant.

Said property contains 50.94 acres more or less.

Survey and description by Karl Wm. Zartman Jr. P.S. 7614

Subject to all easements, leases, right of ways, conditions and restriction of record.

Prior instrument reference: Vol. 55 Page 439; Vol. 186 Page 595; Vol. 232 Pages 292, 295, 298; Vol. 173 Page 32.

Description checked for  
Mathematical Accuracy  
ATHENS COUNTY  
ENGINEER'S OFFICE  
BY: S. Blaus  
DATE: 5-30-97



L E G A L   D E S C R I P T I O N

Situated in the State of Ohio, County of Athens, Township of Troy, Section 11, Town 5, Range 11 and being more fully described as follows:

Beginning at a R.R. spike in the center of an 36" oak stump at Notheast corner of Section 11, Town 5, Range 11.

THENCE South 89 degrees 13 minutes 44 seconds West for a distance of 1351.68 feet to a Iron pin set at the Northwest corner of the East half of the Northeast quarter of said Section and being the TRUE PLACE OF BEGINNING;

THENCE South 89 degrees 13 minutes 44 seconds West for a distance of 220.76 feet to a POINT in the center of County Road 62 and passing an iron pin set at 150 feet distant;

THENCE South 32 degrees 26 minutes 57 seconds East for a distance of 318.41 feet to a POINT in said road;

THENCE South 17 degrees 46 minutes 47 seconds East for a distance of 170.18 feet to a POINT on the west line of the east half of the Northeast quarter of said section and in said road;

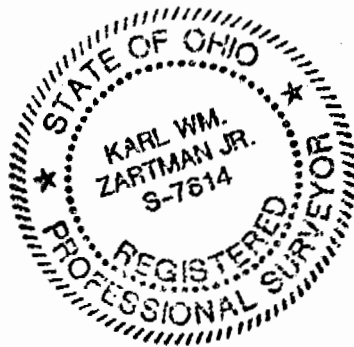
THENCE North 00 degrees 16 minutes 22 seconds West for a distance of 433.72 feet to a IRON PIN SET and being the TRUE PLACE OF BEGINNING and passing an iron pin set at 83.72 feet distant; Containing 0.94 acre more or less.

Survey and description by Karl Wm. Zartman Jr. P.S.7614

Subject to all right of ways, leases, easements, conditions and restrictions of record.

Prior Instrument Reference Volume 232, Page 298.

Description checked for  
Mathematical Accuracy  
ATHENS COUNTY  
ENGINEER'S OFFICE  
BY: S. Blaus  
DATE: 5-30-97





G.RUSELL 48-230

N.E.CORNER  
SEC.11-5-11  
R.R.SPIKE  
CENTER 36'OAK

G. & P. RUSSELL  
208-699 OR

T-7  
50.94 ACRES

PRIOR INSTRUMENT REFER.  
VOL.55-439;VOL.186-595  
VOL.232-292,295,298;VOL.173-32  
TOTAL  
LANDS TO BE CONVEYED  
84.41 ACRES



ASSUMED



B. TRUDO  
386-175

R. HAPNEY  
189-2

T. GABBERT  
204-311

F. B. HAPNEY  
210-664

M. & J. MOORIS  
85-289

C. & M. ROUPE  
353-575

S. & C. JOHNSON  
310-751

Description checked for  
Mathematical Accuracy  
ATHENS COUNTY  
ENGINEER'S OFFICE  
BY: *[Signature]*  
DATE: 5-30-97

C.H.62

T-2

T-3

T-4

T-5

T-6

T-1

5.46 ACRE

5.29 ACRE

5.01 ACRE

6.75 ACRE

5.002 ACRE

5.001 ACRE

R. HARNEY  
206-855

- POINT
- IRON PIN SET
- LP.FD
- × FENCE
- ☒ STONE FD.

PREPARED BY  
ZARTMAN SURVEYS  
STAR ROUTE BOX 71A  
RENO, OHIO 45773  
PHONE 614-473-9777  
FAX 614-473-9787

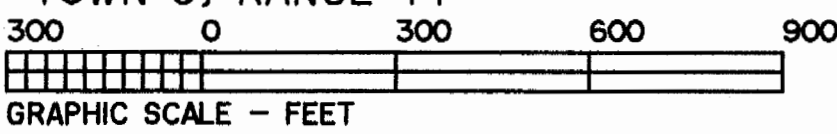
SCALE 1" = 300'

DATE	CREW	OFFICE	PROJECT
5/97	KWZ-DD	KWZ	WOOD97

*[Signature]*

KARL WM. ZARTMAN JR. P.S.7614

36



GRAPHIC SCALE - FEET

N 00°14'34"W 1987.44'

143-449  
D. & B. WILFONG

S.E.CORNER  
N.E. QUARTER

S 89°13'44"W 1351.68'

220.76'  
S 89°13'44"W  
0.94 ACRE  
T-8  
433.72'  
S 32°26'57"E  
318.41'  
S 17°46'47"E  
170.18'

S 00°16'22"E 1144.76'

S 84°12'22"E  
278.00'

W 10°54'10"S  
349.88'

N 83°24'26"W 208.74'

S 00°16'22"E 790.74'

S 02°57'41"W 768.72'

S 03°00'40"W 755.00'

S 03°00'40"W 1086.36'

S 02°10'40"W 968.34'

S 01°36'50"W 868.18'

S 01°36'50"W 868.18'

N 00°14'34"W 770.97'

N 89°30'21"E 1350.20'

S 02°10'40"W 968.34'

S 01°36'50"W 868.18'

S 01°36'50"W 868.18'

N 00°14'34"W 770.97'

N 00°14'34"W 770.97'

N 00°14'34"W 770.97'

N 00°14'34"W 770.97'

N 00°14'34"W 770.97'

N 00°14'34"W 770.97'

N 00°14'34"W 770.97'

N 00°14'34"W 770.97'

N 00°14'34"W 770.97'

164-111

R. HARNEY

164-111

R. HARNEY

164-111

R. HARNEY

164-111

R. HARNEY

164-111

R. HARNEY

534.20'

291.07'

291.07'

291.07'

291.07'

291.07'

291.07'

291.07'

291.07'

291.07'

291.07'

291.07'

291.07'

291.07'

291.07'

291.07'

291.07'

291.07'

291.07'

291.07'

291.07'

291.07'

291.07'

291.07'

291.07'

291.07'

291.07'

291.07'

291.07'

291.07'

291.07'

291.07'

291.07'

291.07'

291.07'

291.07'

291.07'

291.07'

291.07'

291.07'

291.07'

291.07'

291.07'

291.07'

291.07'

291.07'

291.07'

291.07'

291.07'

291.07'

291.07'

291.07'

291.07'

291.07'

291.07'

291.07'

291.07'

291.07'

291.07'

291.07'

291.07'

291.07'

291.07'

291.07'

291.07'

291.07'

291.07'

291.07'

291.07'

291.07'

291.07'

291.07'

291.07'

291.07'

291.07'

291.07'

291.07'

291.07'

291.07'

291.07'

291.07'

291.07'

291.07'

291.07'

291.07'

291.07'

291.07'

291.07'

291.07'

291.07'

291.07'

291.07'

291.07'

291.07'

291.07'

291.07'

291.07'

291.07'

291.07'

291.07'

291.07'

291.07'

291.07'

291.07'

291.07'

291.07'

291.07'

291.07'

291.07'

291.07'

291.07'

291.07'

291.07'

291.07'

291.07'

291.07'

291.07'

291.07'

291.07'

291.07'

291.07'

291.07'

291.07'

291.07'

291.07'

291.07'

291.07'

291.07'

291.07'

291.07'

291.07'

291.07'

291.07'

291.07'

291.07'

291.07'

291.07'

291.07'

291.07'

291.07'

291.07'

291.07'

291.07'

291.07'

291.07'

291.07'

291.07'

291.07'

291.07'

291.07'

291.07'

291.07'

291.07'

291.07'

291.07'

291.07'

291.07'

291.07'

291.07'

291.07'

291.07'

291.07'

291.07'

291.07'

291.07'

291.07'

291.07'

291.07'

291.07'

291.07'

291.07'

291.07'

291.07'

291.07'

291.07'

291.07'

291.07'

291.07'

291.07'

291.07'

291.07'

291.07'

291.07'

291.07'

291.07'

291.07'

291.07'

291.07'

291.07'

291.07'

291.07'

291.07'

291.07'

291.07'

291.07'

291.07'

291.07'

291.07'

291.07'

291.07'

291.07'

291.07'

291.07'

291.07'

291.07'

291.07'

291.07'

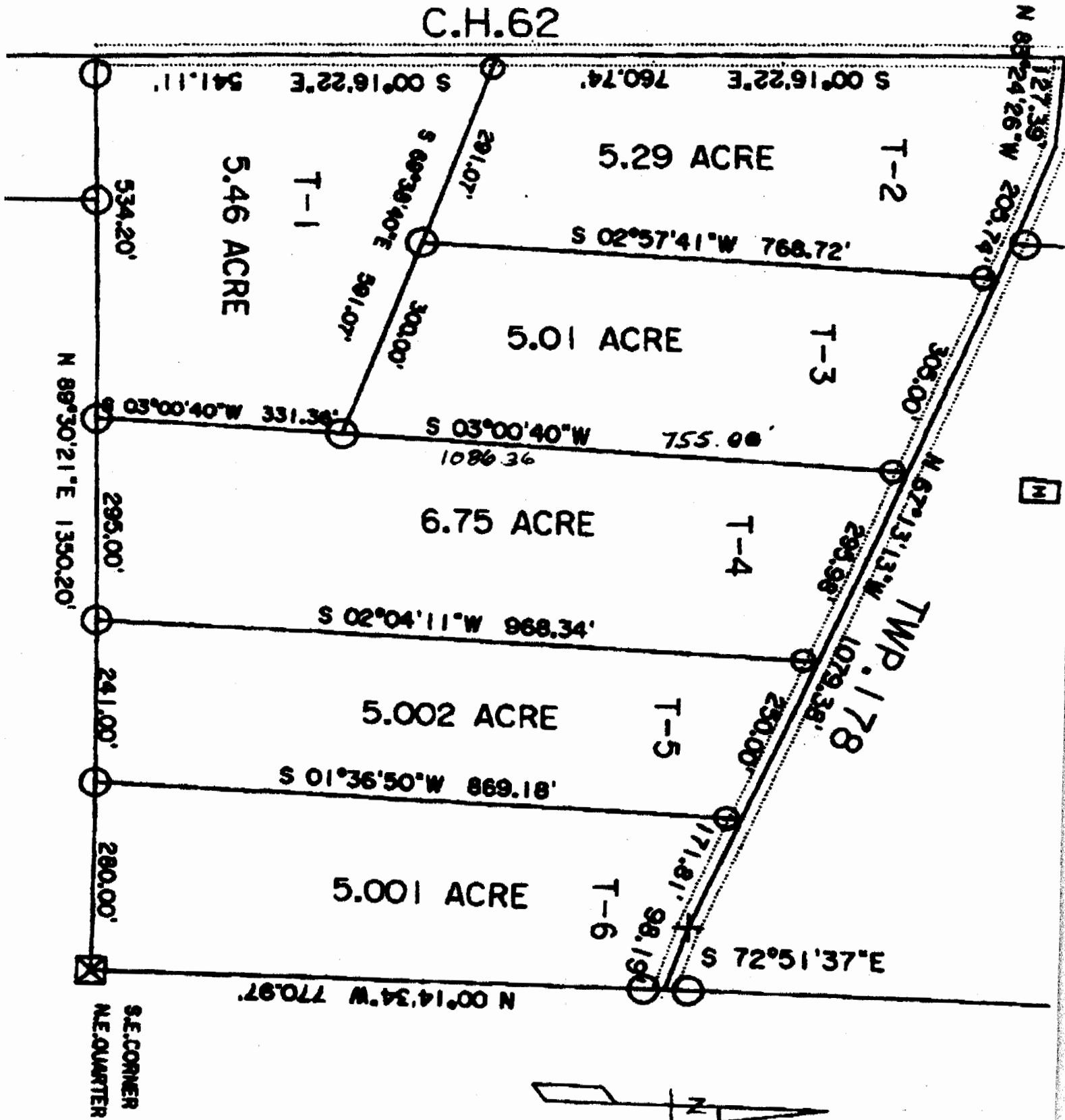
291.07'

291.07'

&lt;



# EXHIBIT "A"



G.RUSELL 48-230

N.E.CORNER  
SEC.11-5-11  
R.R.SPIKE  
CENTER 36'OAK

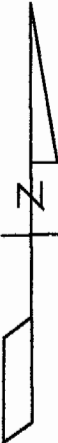
T-7  
50.94 ACRES

PRIOR INSTRUMENT REFER.  
VOL.55-439;VOL.186-595  
VOL.232-292,295,298;VOL.173-32  
TOTAL  
LANDS TO BE CONVEYED  
84.41 ACRES

G. & P. RUSSELL  
208-699 OR



ASSUMED



B. TRUDO  
386-175

R. HAPNEY  
189-2

T. GABBERT  
204-311

F. B. HAPNEY  
210-664

S 00°16'22"E 1144.76'

S 84°12'22"E 278.09'

N 85°24'26"W 200.74'

S 00°16'22"E 760.74'

S 00°16'22"E 541.11'

R. HARNEY  
206-855

C. & M. ROUPE  
353-575

S. & C. JOHNSON  
310-751

C.H.62

T-2

5.29 ACRE

T-3

5.01 ACRE

T-4

6.75 ACRE

T-5

5.002 ACRE

T-6

5.001 ACRE

T-1

5.46 ACRE

TWP. 178

143-449  
D. & B. WILFONG

S.E.CORNER  
N.E. QUARTER

R. HARNEY  
206-855

STATE OF OHIO  
COUNTY OF ATHENS  
TOWNSHIP OF TROY  
SECTION 11  
TOWN 5, RANGE 11

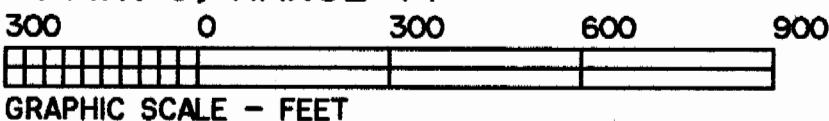
- POINT
- IRON PIN SET
- I.P.F.D
- × FENCE
- ☒ STONE FD.

PREPARED BY  
ZARTMAN SURVEYS  
STAR ROUTE BOX 71A  
RENO, OHIO 45773  
PHONE 614-473-9777  
FAX 614-473-9787

SCALE 1" = 300'

DATE	CREW	OFFICE	PROJECT
5/97	KWZ-DD	KWZ	WOOD97

*Karl Wm Zartman Jr*  
KARL WM. ZARTMAN JR. P.S.7614



38