

BRANNER SURVEYING

MEMBER-PROFESSIONAL LAND SURVEYORS OF OHIO

12500 N. PEACH RIDGE ROAD
ATHENS, OHIO 45701

TELEPHONE
(614) 592-5778

JOHN M. BRANNER
Registered Land Surveyor

DESCRIPTION OF A 26.01 ACRE TRACT

Situated in Section 12, T.5, R.11, Troy Township, Athens County, Ohio and being more particularly described as follows:

Commencing at a stone found at the South-east corner of the North-west quarter of Section 12, said point being the POINT OF BEGINNING; thence, North 89 degrees 39 minutes 30 seconds West, a distance of 999.87 feet to a point in the center of Township road 180, passing an iron pin set at 979.87 feet; thence, with said road, North 12 degrees 49 minutes 15 seconds West, a distance of 330.02 feet to a point; thence, North 11 degrees 06 minutes 53 seconds West, a distance of 225.84 feet to a point; thence, North 9 degrees 21 minutes 24 seconds West, a distance of 204.66 feet to a point; thence, North 5 degrees 55 minutes 10 seconds West, a distance of 110.56 feet to a point; thence, North 4 degrees 32 minutes 29 seconds West, a distance of 91.39 feet to a point; thence, North 4 degrees 50 minutes 17 seconds West, a distance of 93.88 feet to a point; thence, leaving said road, North 86 degrees 20 minutes 17 seconds East, a distance of 107.57 feet to an iron pin set, passing an iron pin set at 11.96 feet; thence, North 5 degrees 45 minutes 26 seconds West, a distance of 42.53 feet to a point, passing an iron pin set at 36.55 feet; thence, North 80 degrees 29 minutes 52 seconds West, a distance of 5.61 feet to a point; thence, South 89 degrees 24 minutes 17 seconds West, a distance of 105.93 feet to a point in the aforementioned Township road 180; thence, with said road, North 22 degrees 38 minutes 55 seconds West, a distance of 53.95 feet to a point; thence, leaving said road, North 89 degrees 24 minutes 17 seconds East, a distance of 130.60 feet to an iron pin set, passing an iron pin set at 20.00 feet; thence, South 80 degrees 29 minutes 52 seconds East, a distance of 347.96 feet to an iron pin set; thence, South 52 degrees 12 minutes 06 seconds East, a distance of 214.07 feet to an iron pin set; thence, East, a distance of 572.09 feet to an iron pin set; thence, South 0 degrees 33 minutes 48 seconds West, a distance of 957.47 feet to the POINT OF BEGINNING; said described tract containing 26.01 acres.

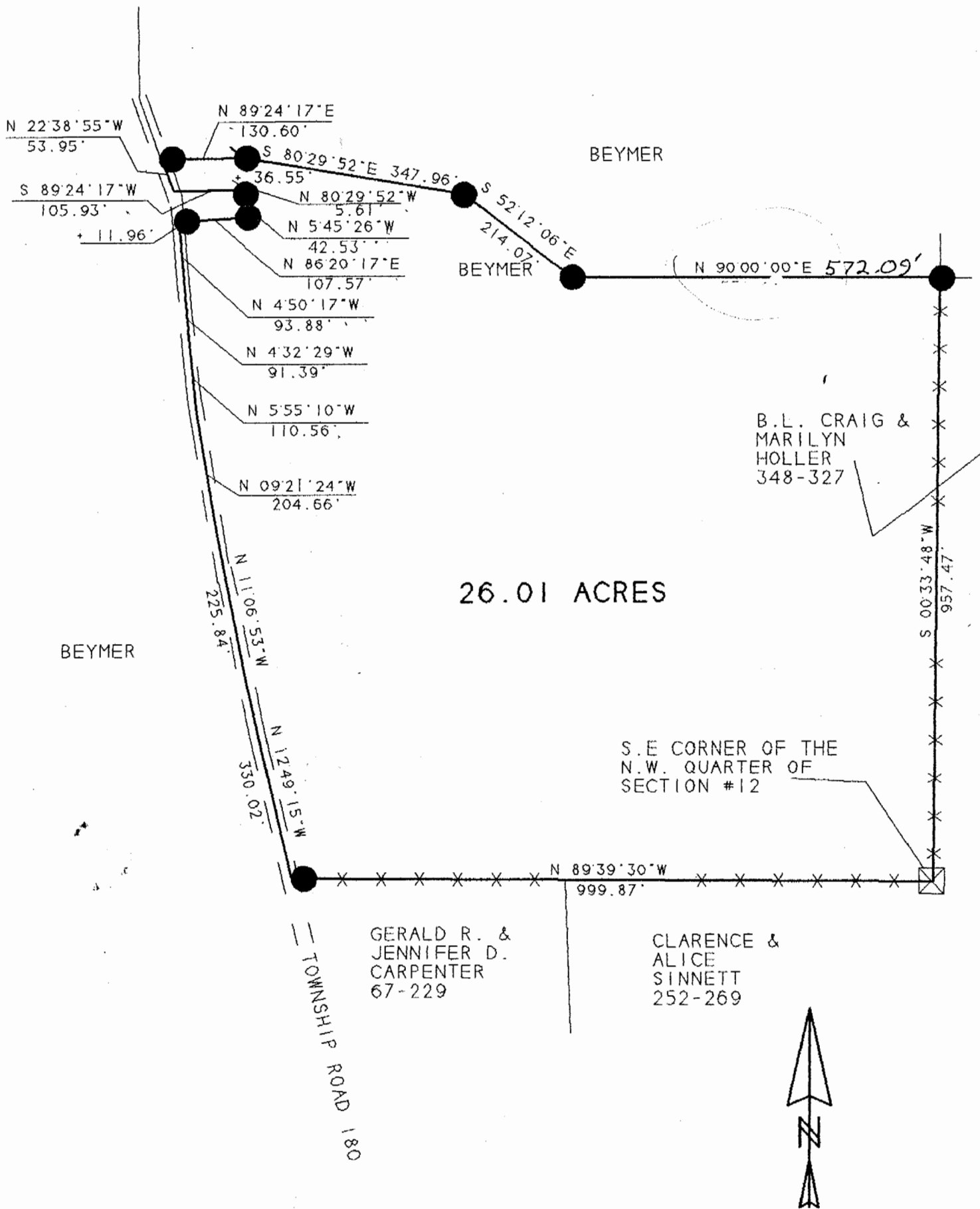
Subject to all easements and right of way of record.
All iron pins set are 5\8"x 30" rebar.

The above description is based on a field survey completed October 1996 by John M. Branner P.S. 6805

Description checked for
Mathematical Accuracy
ATHENS COUNTY
ENGINEER'S OFFICE

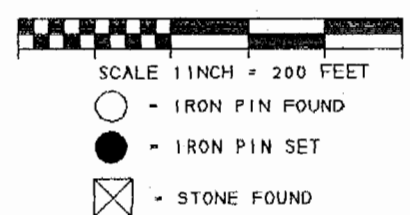
BY: Donna McLean
DATE: 10-15-96

32



SURVEY OF A 26.01 ACRE TRACT
 SEC. 12. T.5. R.15. TROY TWP.
 ATHENS COUNTY, OHIO
 SURVEYED OCTOBER 1996

JOHN M. BRANNER P.S. 6805
 12500 N. PEACH RIDGE ROAD
 ATHENS, OHIO 592-5778



BEARINGS SHOWN HEREON
 ARE BASED ON A SURVEY OF AN
 6.53 ACRE TRACT AND ARE USED TO DENOTE
 ANGLES ONLY

Description checked for
 Mathematical Accuracy
 ATHENS COUNTY
 ENGINEER'S OFFICE
 BY: Donna McLean
 DATE: 10-15-96

33
 TRV #12