

BRANNER SURVEYING

MEMBER-PROFESSIONAL LAND SURVEYORS OF OHIO

12500 N. PEACH RIDGE ROAD
ATHENS, OHIO 45701

JOHN M. BRANNER
Registered Land Surveyor

TELEPHONE
(614) 592-5778

DESCRIPTION OF A 39.51 ACRE TRACT

Beginning at an iron pin found that bears West, 20.20 chains (deed) from the South-east corner of Section 26;

thence North 88 degrees 47 minutes 14 seconds West, a distance of 1621.96 feet to a point in Four Mile Creek, passing an iron pin set at 1469.96 feet;

thence, along said creek North 36 degrees 53 minutes 28 seconds East, a distance of 344.77 feet;

thence, North 25 degrees 51 minutes 48 seconds East, a distance of 291.62 feet;

thence North 18 degrees 38 minutes 51 seconds East, a distance of 290.17 feet;

thence North 31 degrees 20 minutes 16 seconds East, a distance of 332.09 feet;

thence North 18 degrees 09 minutes 25 seconds East, a distance of 280.05 feet;

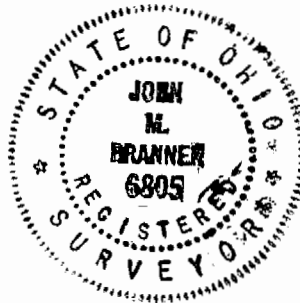
thence, leaving Four Mile Creek, North 89 degrees 56 minutes 00 seconds East, a distance of 940.00 feet (passing an iron pin set at 56.15 feet to an iron pin set in which a cross found in a large rock bears South 13 Degrees 06 Minutes West, 44.88 feet;

thence South 0 degrees 13 minutes 08 seconds West, a distance of 1398.26 feet to the POINT OF BEGINNING; said described tract containing 39.511 acres.

Subject to all easements and rights of way of record.


John M. Branner P.S. 6805

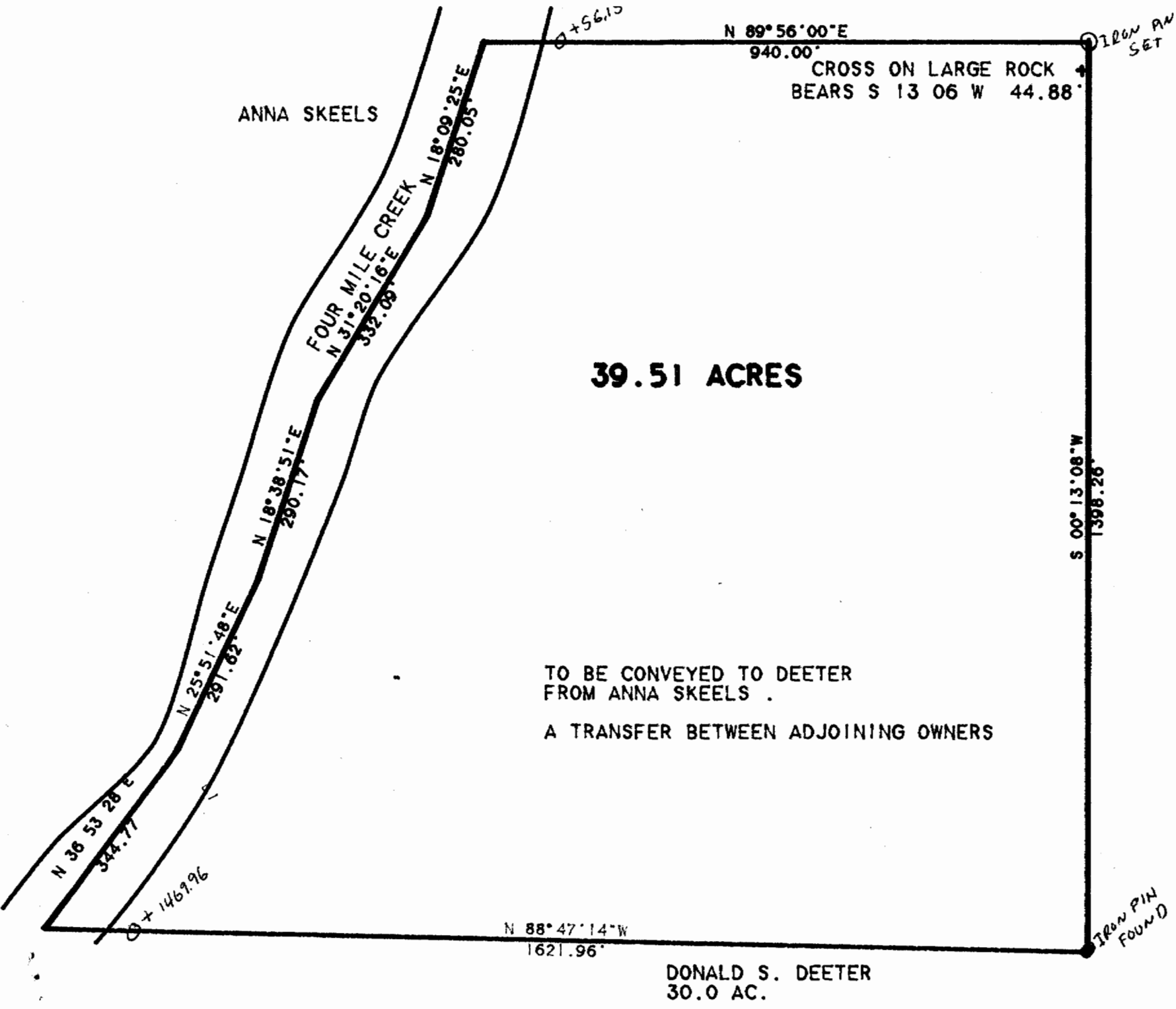
Description checked for
Mathematical Accuracy
ATHENS COUNTY
ENGINEER'S OFFICE
BY: S. Blaiser
DATE: 5-20-94



73

TRY #26

75



ANNA SKEELS

39.51 ACRES

TO BE CONVEYED TO DEETER
FROM ANNA SKEELS .

A TRANSFER BETWEEN ADJOINING OWNERS

DONALD S. DEETER
30.0 AC.

N 89° 56' 00" E

940.00'

CROSS ON LARGE ROCK
BEARS S 13 06 W 44.88'

S 00° 13' 08" W
1398.26'

IRON PIN
FOUND



SCALE 1 INCH = 200 FEET
O = IRON PIN SET

SURVEY OF A 39.51 ACRE TRACT
IN SECTION 26, T.5, R.11, TROY
TOWNSHIP, ATHENS COUNTY, OHIO
SURVEYED MAY 1994

John M. Branner
JOHN M. BRANNER P.S. 6805
12500 N. PEACH RIDGE ROAD
ATHENS, OHIO 592-5778

