

Description of a 5.002 Acre Tract

Situated in Section 3, T.5, R.11, Troy Township, Athens County, Ohio and being part of a tract of land as described in Volume 286, Page 576 Athens County Deed Records and being more particularly described as follows:

Beginning at an iron pin set at a fence post at Grantor's South-west corner , said pin bears South 30 degrees 50 minutes 30 seconds East, 4150 feet more or less from the North-west corner of Section 3;

Thence, along the East-line of Conley (253-165 D.R.)

N 0° 33' 1" E, 363.13 feet to a point in Bowman Road, passing an iron pin set at 338.13 feet;

Thence, along new lines created by this survey and along Bowman Road:

N 89° 08' 15" E, 270.28 feet;

S 79° 07' 36" E, 85.62 feet;

S 78° 01' 21" E, 252.98 feet;

Thence, leaving said road

S 2° 11' 27" E, 319.26 feet to an iron pin set in Grantor's South-line, passing an iron pin set at 12.00 feet;

Thence along said line and the North-line of Conley (253-165 D.R.)

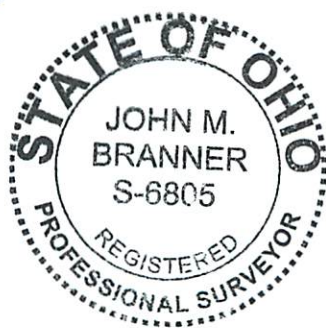
N 88° 05' 55" W, 617.84 feet to the point of beginning and containing 5.002 acres.

Subject to all easements and rights of way of record.

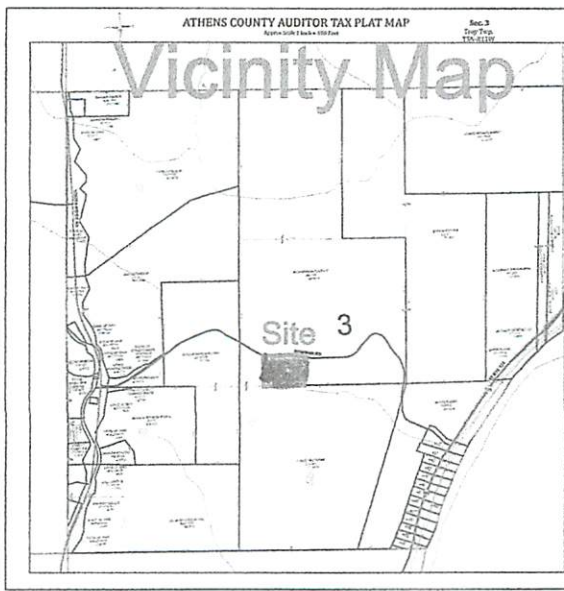
Iron pins set are 5/8" by 30" long rebar with plastic I.D cap stamped "Branner P.S. 6805"

The above description is based on a field survey completed November 2012 by

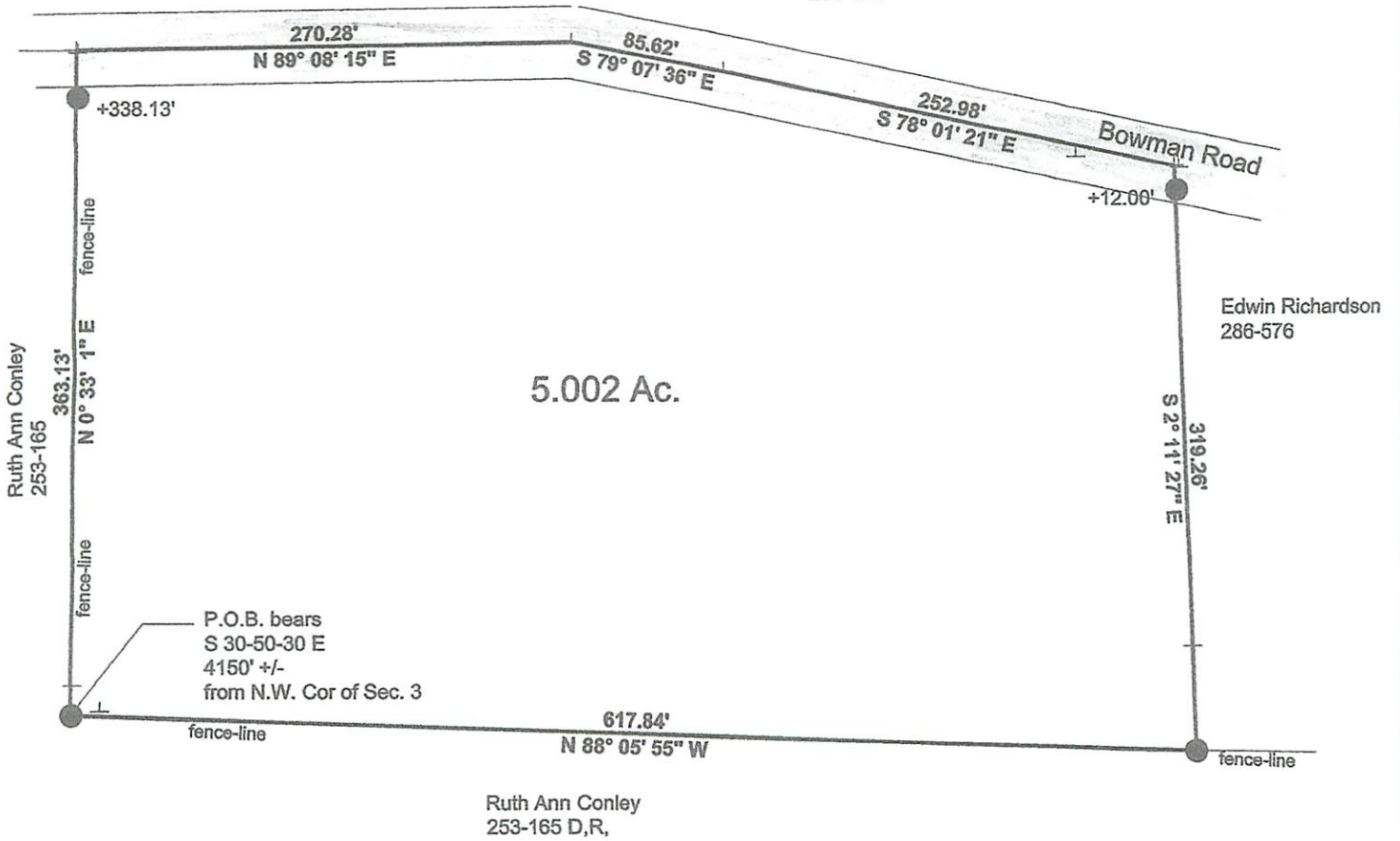
John M. Branner P.S. 6805



Description Checked for
Mathematical Accuracy
Athens County
ENGINEER'S OFFICE
BY: K. [Signature]
DATE: 11-29-12

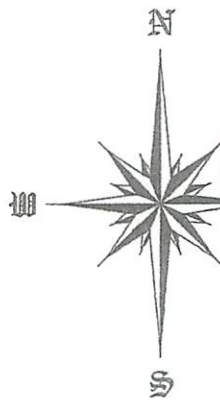


Edwin Richardson
286-576



Description Checked for
Mathematical Accuracy
Athens County
ENGINEER'S OFFICE

BY: *K. Bailey*
DATE: 11-29-12



Survey of a 5.002 acre Tract in Section 3,
T.5, R.11 Troy Township, Athens County, Oh
Surveyed November 2012

John M. Branner
John M. Branner P.S. 6805
62 East First Street
The Plains, Ohio 45780



Scale 1 inch = 100 feet
= iron pin set 5/8"x30" long rebar w/ plastic I.D. cap stamped "Branner P.S. 6805"
Bearings: Grid North (N.A.D. 83)
Ref Docs: Tax Plat-Deeds