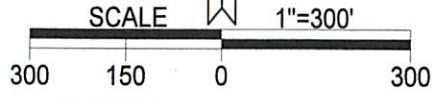
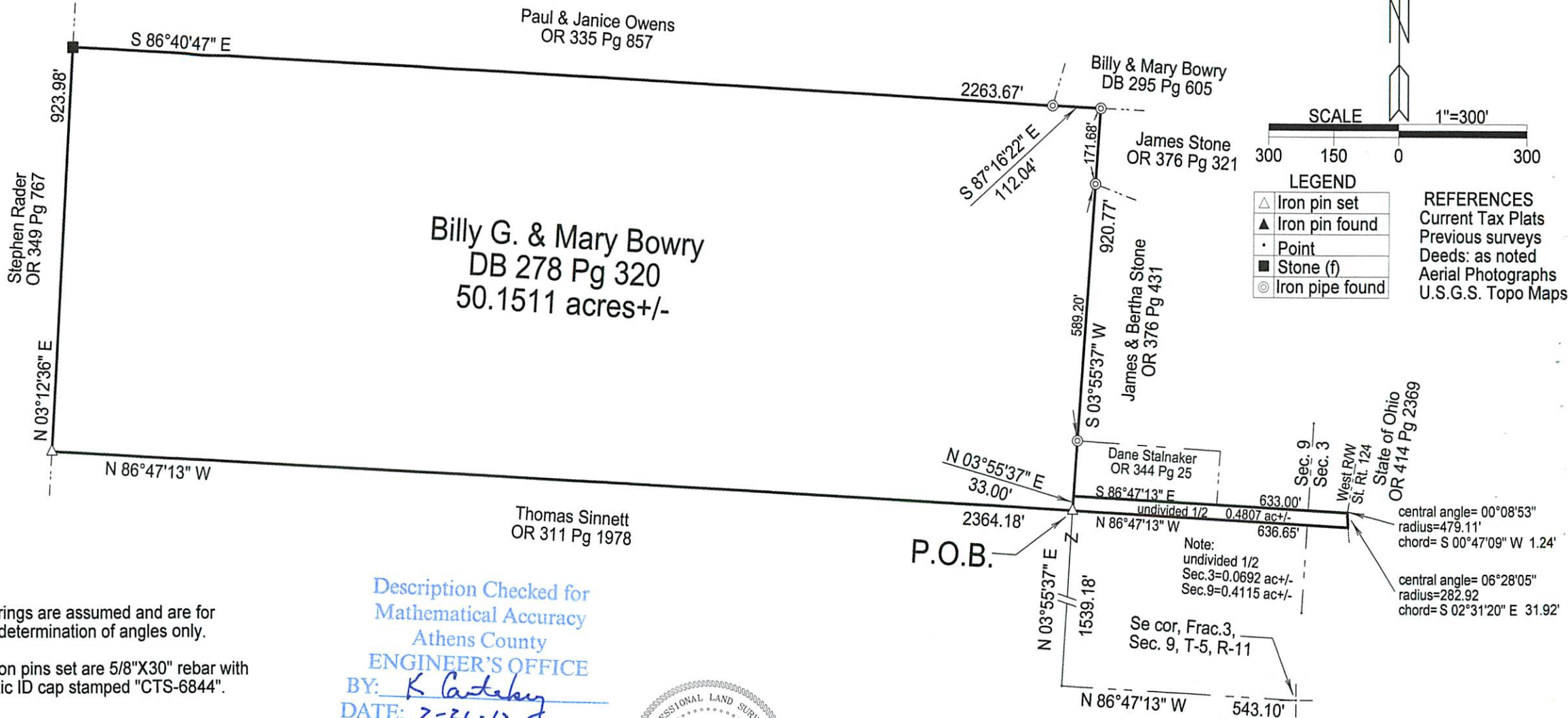


BEING A PART OF FRACTION 3, SECTION 9 AND A PART OF SECTION 3, TOWNSHIP-5, RANGE-11,
TROY TOWNSHIP, ATHENS COUNTY, STATE OF OHIO.



LEGEND

△	Iron pin set
▲	Iron pin found
•	Point
■	Stone (f)
⊙	Iron pipe found

REFERENCES
 Current Tax Plats
 Previous surveys
 Deeds: as noted
 Aerial Photographs
 U.S.G.S. Topo Maps

Note: Bearings are assumed and are for the determination of angles only.

All iron pins set are 5/8"X30" rebar with plastic ID cap stamped "CTS-6844".

Description Checked for
 Mathematical Accuracy
 Athens County
ENGINEER'S OFFICE
 BY: K. Cantelero
 DATE: 2-21-12



Surveyed and platted by
 C. Thomas Smith
 Ohio Professional Surveyor No 6844
 P.O. Box 393
 Racine, Ohio 45771
 740-949-2524

PLAT PREPARED FROM AN ACTUAL SURVEY MADE ON THE 18TH DAY OF
 FEBRUARY, 2012 BY,

C. Thomas Smith
C. THOMAS SMITH OHIO PROFESSIONAL SURVEYOR
 No. 6844