

5.02 AC.



GRANTOR TO CONVEY
RESIDUAL

LINE	BEARING	DISTANCE
L 1	S 02° 03' 07" W	90.18'
L 2	S 89° 22' 02" E	12.34'
L 3	N 09° 43' 45" W	175.34'
L 4	N 01° 54' 16" E	182.89'
L 5	S 87° 25' 24" E	169.44'
L 6	S 00° 04' 34" W	16.17'
L 7	N 89° 33' 09" W	149.66'

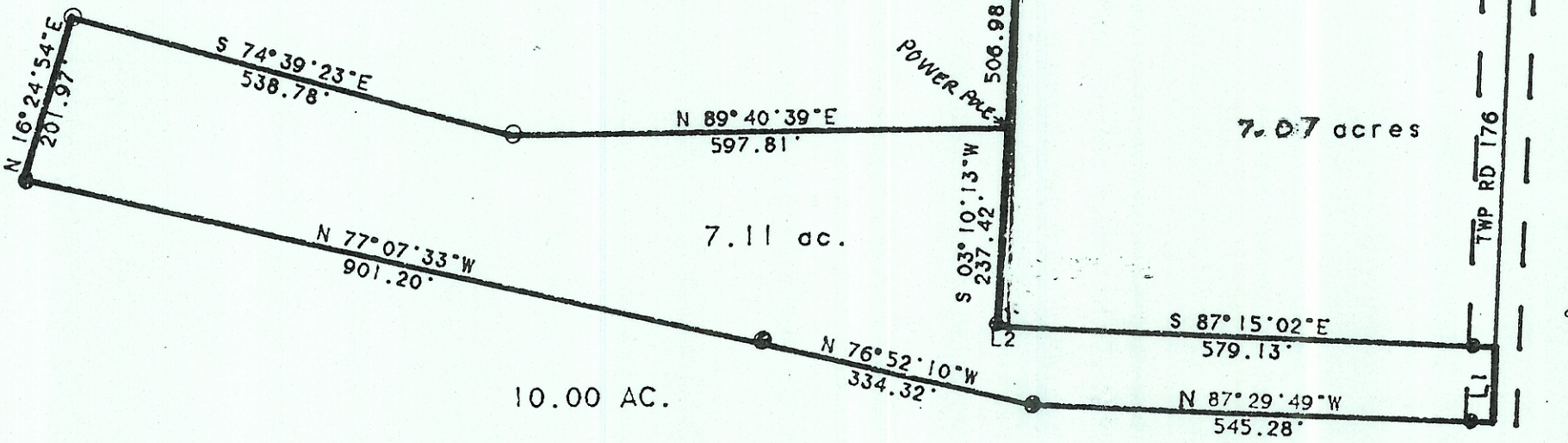
2.34 AC.
TO BE RESERVED BY
GRANTOR

SCALE 1 INCH = 200 FEET
 ○ - IRON PIN SET
 ● - EXISTING PIN

SURVEY OF THREE TRACTS IN
SECTION 17. T.5. R.11.
TROY TOWNSHIP. ATHENS CO. O.

SURVEYED MAY 1994
John M. Branner
 JOHN M. BRANNER P.S. 6805
 12500 N. PEACHRIDGE ROAD.
 ATHENS. OHIO 592-5778

REV 9/21/94
 7.07 AC TRACT



52420
51130
50120
130

N 16° 24' 54" E
 201.97'

S 74° 39' 23" E
 538.78'

N 89° 40' 39" E
 597.81'

N 77° 07' 33" W
 901.20'

10.00 AC.

7.11 ac.

POWER POLE

S 03° 10' 13" W
 237.42'

N 76° 52' 10" W
 334.32'

S 06° 09' 58" W
 506.98'

N 89° 33' 09" W
 242.79'

S 87° 15' 02" E
 579.13'

N 87° 29' 49" W
 545.28'

7.07 acres

N 79° 00' 26" E
 218.90'

N 89° 01' 49" W
 194.18'

TWP RD T76

S 02° 30' 37" W
 379.31'

L5

L4

L7

L1

L3

L2

L6