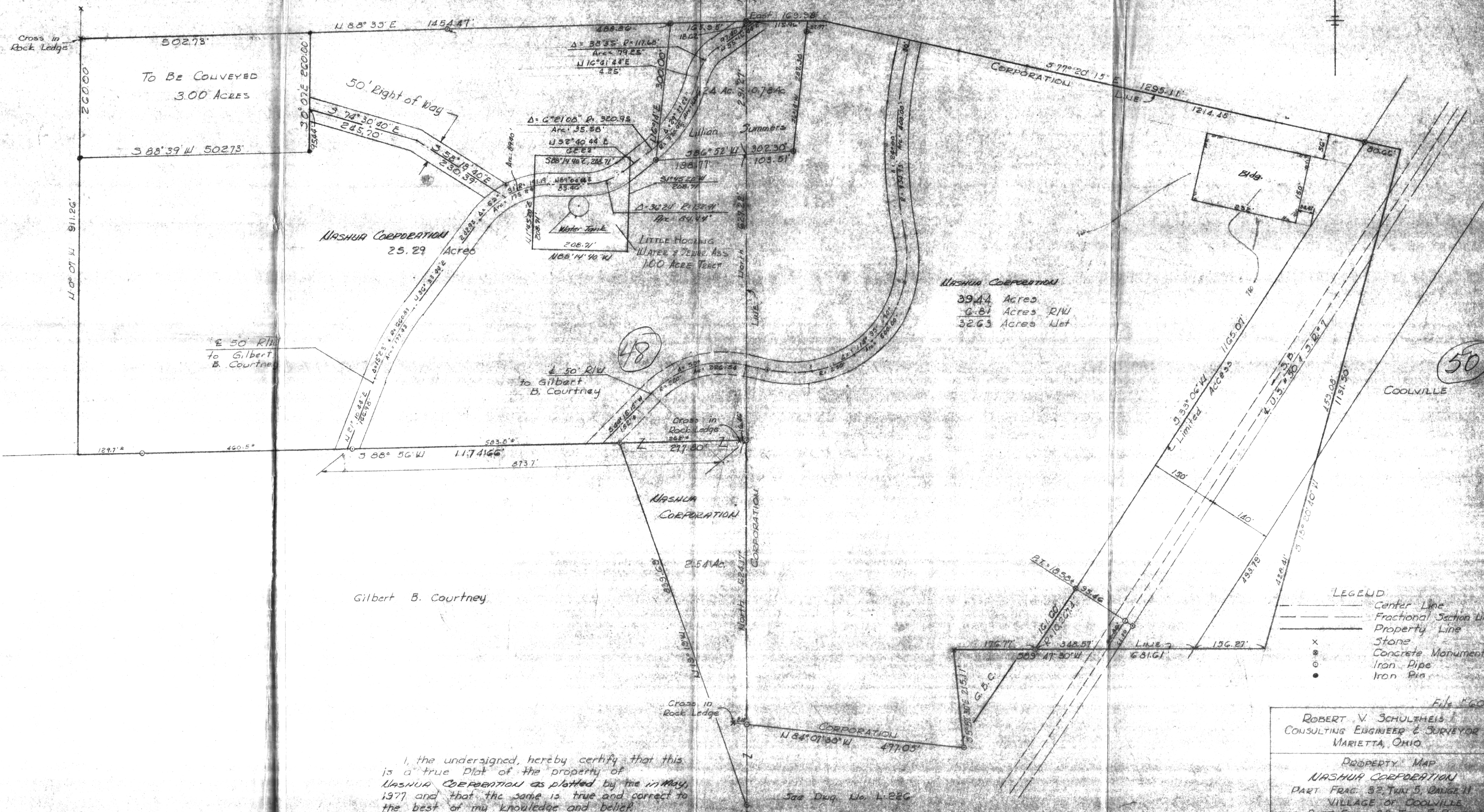


Marjorie Jean Malone, et al.

COOLVILLE CEMETERY



To Be Conveyed
3.00 Acres

NASHUA CORPORATION
25.29 Acres

NASHUA CORPORATION
39.44 Acres
6.81 Acres R/W
32.63 Acres Net

Gilbert B. Courtney

I, the undersigned, hereby certify that this is a true Plat of the property of NASHUA CORPORATION as plotted by me in May, 1977 and that the same is true and correct to the best of my knowledge and belief.

Robert V. Schulteis
Reg. Surveyor # 5287

- LEGEND
- Center Line
 - - - Fractional Section Line
 - Property Line
 - x Stone
 - o Concrete Monument
 - o Iron Pipe
 - Iron Pin

ROBERT V. SCHULTEIS
CONSULTING ENGINEER & SURVEYOR
MARIETTA, OHIO

PROPERTY MAP
NASHUA CORPORATION
PART FRAC. 32, TWP. 5, RANGE 11
VILLAGE OF COOLVILLE
AND PART FRAC. 33, TWP. 5, RANGE 11
TROY TOWNSHIP
ATHEENS COUNTY, OHIO

SUB. 2-18-67 DATE: 23/MAY/77 F.S. 301/14
DWS. BY: R.V.S. SCALE: 1"=100' DWS. IN: L-226

REVISED 3 AC. TRACT ADDED 8-4-76

49

51