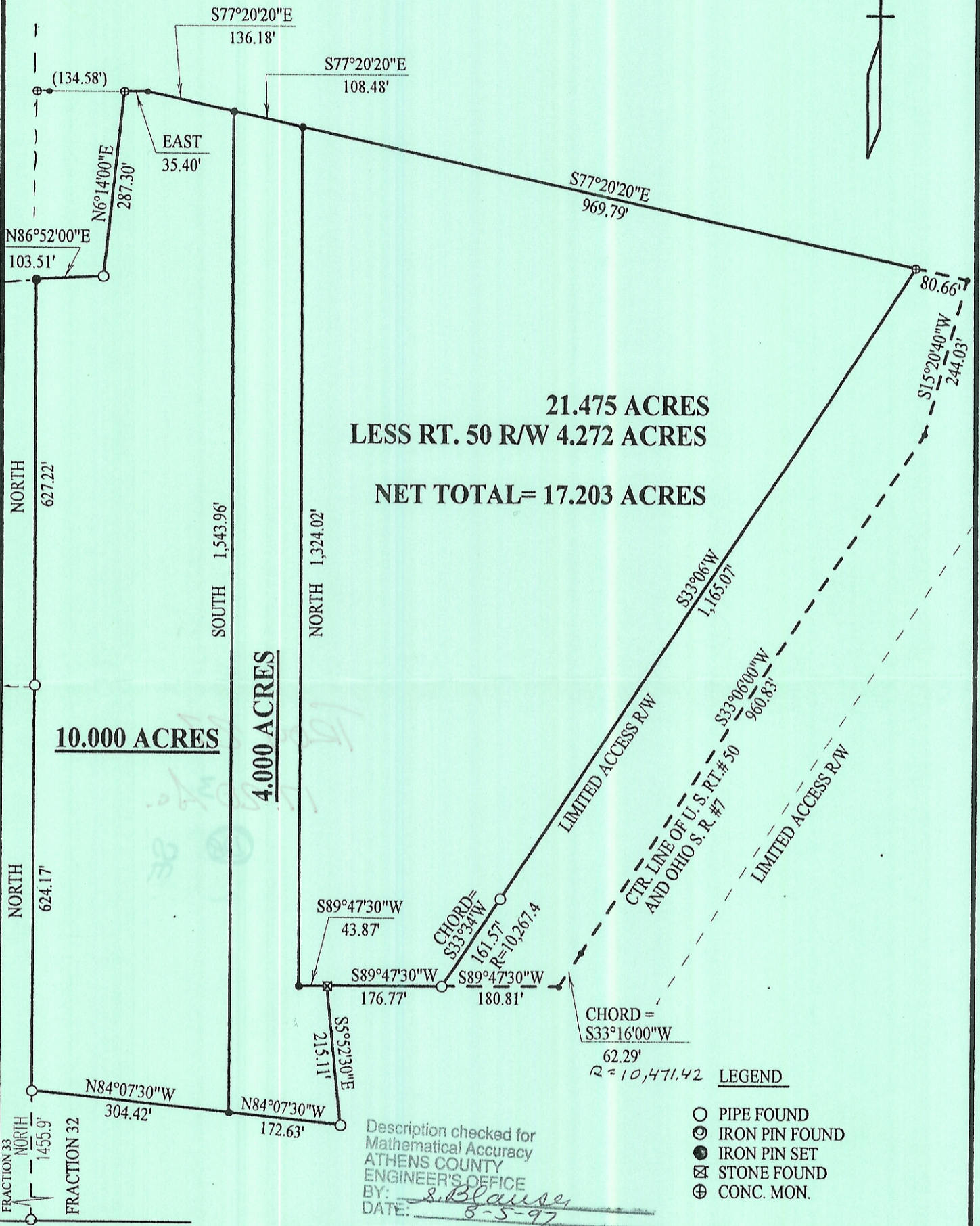


NOTE- BEARING REFERENCE:  
 SURVEY BY R. V. SCHULTHEIS  
 PLAT REVISION DATED 5/23/77



21.475 ACRES  
 LESS RT. 50 R/W 4.272 ACRES

NET TOTAL= 17.203 ACRES

10.000 ACRES

4.000 ACRES

NORTH 627.22'  
 NORTH 624.17'  
 NORTH 1455.9'

SOUTH 1,543.96'

NORTH 1,324.02'

S89°47'30"W  
 43.87'

S89°47'30"W  
 176.77'

CHORD =  
 S33°34'W  
 161.571'  
 R=10,267.4

S89°47'30"W  
 180.81'

S5°52'30"E  
 215.11'

CHORD =  
 S33°16'00"W  
 62.29'

R=10,471.42

LEGEND

- PIPE FOUND
- ⊙ IRON PIN FOUND
- IRON PIN SET
- ⊠ STONE FOUND
- ⊕ CONC. MON.

Description checked for  
 Mathematical Accuracy  
 ATHENS COUNTY  
 ENGINEER'S OFFICE  
 BY: *S. Blause*  
 DATE: *8-5-97*



*Darrell R. Boice*  
 DARRELL R. BOICE  
 ELIZABETH, WV  
 PH. 474-3654

# PLAT OF SURVEY FOR PAWNEE, INC.

BEING A PART OF FRAC. 32, TWN 5, RANGE 11  
 VILLAGE OF COOLVILLE  
 TROY TOWNSHIP  
 ATHENS COUNTY, OHIO  
 SCALE 1" = 200'