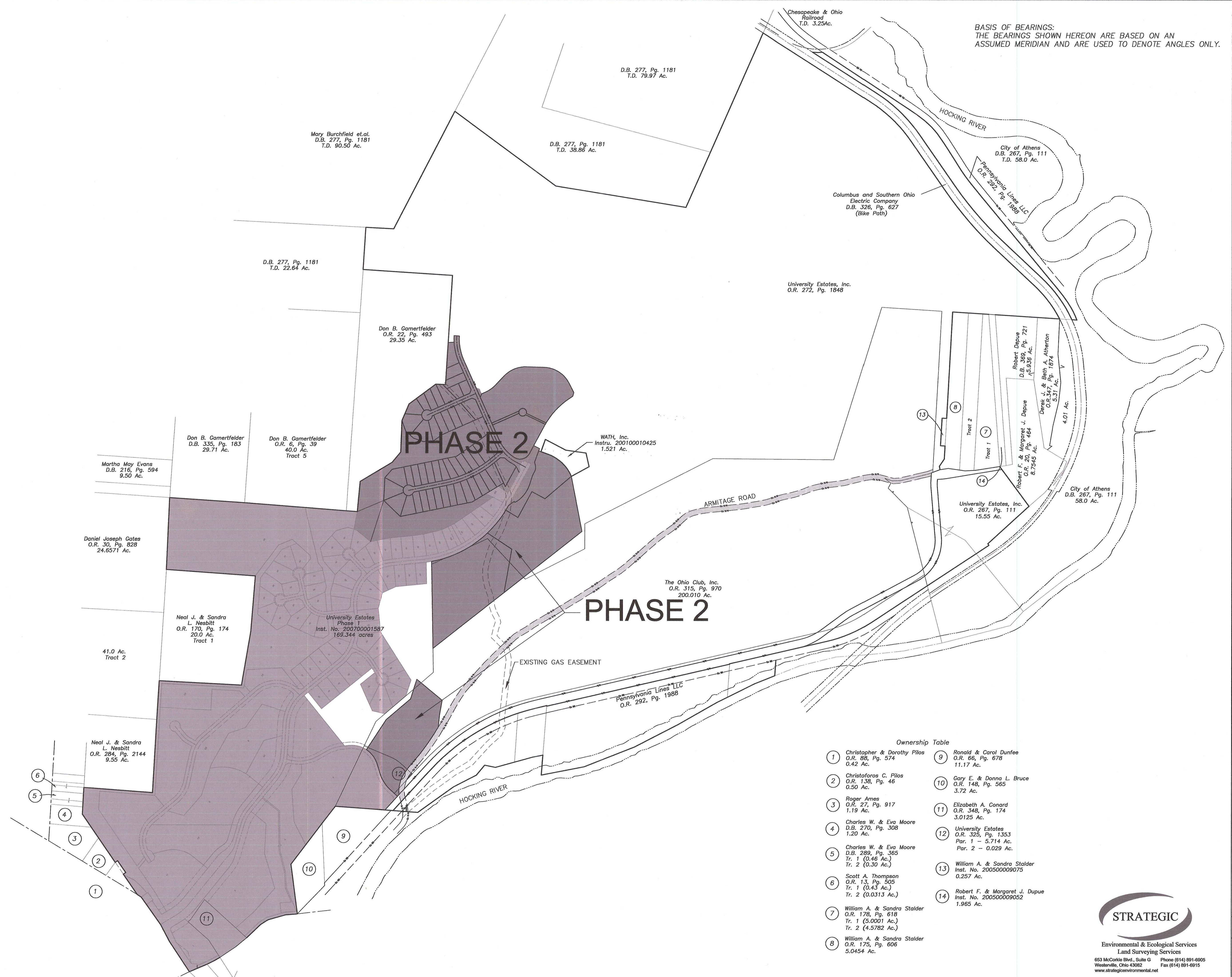


BASIS OF BEARINGS:
THE BEARINGS SHOWN HEREON ARE BASED ON AN
ASSUMED MERIDIAN AND ARE USED TO DENOTE ANGLES ONLY.



UNIVERSITY ESTATES
PHASE 2

FINAL PLAT

DATE:
12/10/07

2
5

Ownership Table

① Christopher & Dorothy Pilos O.R. 88, Pg. 574 0.42 Ac.	⑨ Ronald & Carol Dunfee O.R. 66, Pg. 678 11.17 Ac.
② Christoforos C. Pilos O.R. 136, Pg. 46 0.50 Ac.	⑩ Gary E. & Donna L. Bruce O.R. 148, Pg. 565 3.72 Ac.
③ Roger Ames O.R. 27, Pg. 917 1.19 Ac.	⑪ Elizabeth A. Conard O.R. 348, Pg. 174 3.0125 Ac.
④ Charles W. & Eva Moore D.B. 270, Pg. 308 1.20 Ac.	⑫ University Estates O.R. 325, Pg. 1353 Par. 1 - 5.714 Ac. Par. 2 - 0.029 Ac.
⑤ Charles W. & Eva Moore D.B. 289, Pg. 365 Tr. 1 (0.46 Ac.) Tr. 2 (0.30 Ac.)	⑬ William A. & Sandra Stalder Inst. No. 200500009075 0.257 Ac.
⑥ Scott A. Thompson O.R. 13, Pg. 505 Tr. 1 (0.43 Ac.) Tr. 2 (0.0313 Ac.)	⑭ Robert F. & Margaret J. Dupue Inst. No. 200500009052 1.965 Ac.
⑦ William A. & Sandra Stalder O.R. 178, Pg. 618 Tr. 1 (5.0001 Ac.) Tr. 2 (4.5782 Ac.)	
⑧ William A. & Sandra Stalder O.R. 175, Pg. 606 5.0454 Ac.	

STRATEGIC

Environmental & Ecological Services
Land Surveying Services

653 McCorkle Blvd., Suite G Phone (614) 891-6905
Westerville, Ohio 43082 Fax (614) 891-6915
www.strategicenvironmental.net