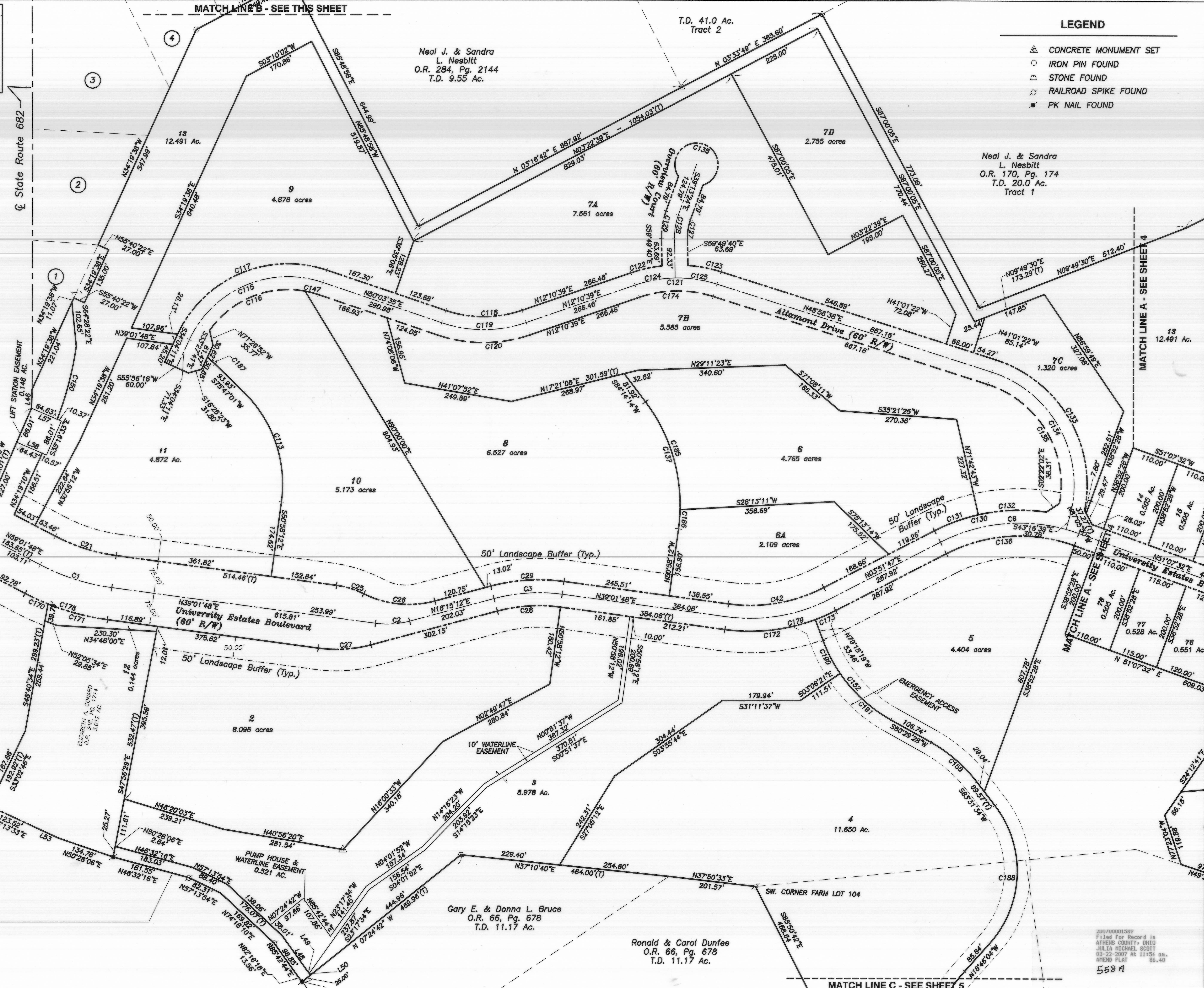


MATCH LINE B - SEE THIS SHEET

- Ownership Table**
- ① Christopher & Dorothy Pilos
O.R. 88, Pg. 574
T.D. 0.42 Ac.

O.R. 387, Pg. 1233
T.D. 0.084 Ac.
 - ② Christoforos Pilos
O.R. 138, Pg. 46
T.D. 0.50 Ac.
 - ③ Roger Ames
O.R. 27, Pg. 917
T.D. 1.19 Ac.
 - ④ Charles W. & Eva Moore
D.B. 270, Pg. 308
T.D. 1.20 Ac.
 - ⑤ Charles W. & Eva Moore
D.B. 289, Pg. 365
Tr. 1 (T.D. 0.46 Ac.)
Tr. 2 (T.D. 0.0313 Ac.)
 - ⑥ Scott A. Thompson
O.R. 13, Pg. 505
Tr. 1 (T.D. 0.43 Ac.)
Tr. 2 (T.D. 0.0313 Ac.)



T.D. 41.0 Ac.
Tract 2

Neal J. & Sandra
L. Nesbitt
O.R. 284, Pg. 2144
T.D. 9.55 Ac.

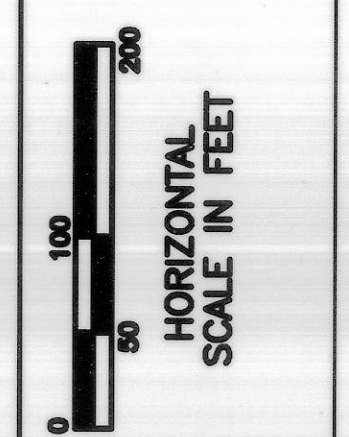
Neal J. & Sandra
L. Nesbitt
O.R. 170, Pg. 174
T.D. 20.0 Ac.
Tract 1

Gary E. & Donna L. Bruce
O.R. 66, Pg. 678
T.D. 11.17 Ac.

Ronald & Carol Dunfee
O.R. 66, Pg. 678
T.D. 11.17 Ac.

LEGEND

- ▲ CONCRETE MONUMENT SET
- IRON PIN FOUND
- STONE FOUND
- ⊗ RAILROAD SPIKE FOUND
- PK NAIL FOUND



DATE	REVISION	NO.	BY	CHECKED	DATE
			JLK	JLV	1/25/07
			JLV	JLV	

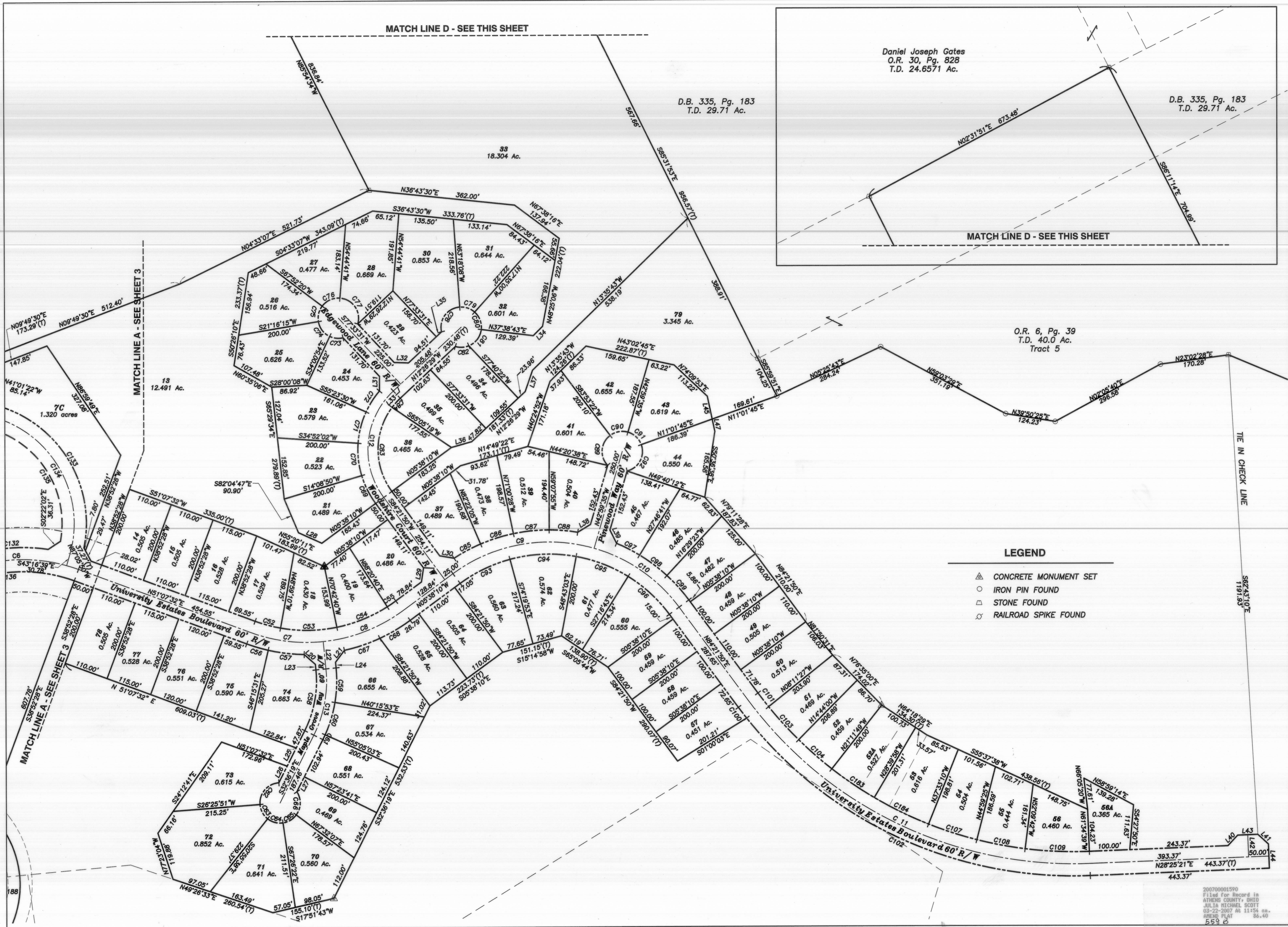
**UNIVERSITY ESTATES PHASE 1
FINAL PLAT**

DETAIL PLAN

DESIGN.DWG

JOB NUMBER
01-087

2007/0001389
Filed for Record in
ATHENS COUNTY, OHIO
JULIA MICHAEL SCOTT
03-22-2007 at 11:54 am.
AMEND PLAT 86.40
558 A



**UNIVERSITY ESTATES PHASE 1
FINAL PLAT**

DETAIL PLAN

NO.	REVISION	DATE
1	JKL	JULY
2	JKL	JULY
3	JKL	JULY

59 GRANT STREET
NEWARK, OH 43085-1561
TEL (614) 344-5746
FAX (740) 344-5746
www.jobeshenderson.com

**JOBE
HENDERSON &
ASSOCIATES INC.**
CIVIL ENGINEERING & LAND SURVEYING SINCE 1965

DRIVING NAME
DESIGN.DWG

JOB NUMBER
01-087

4
5

200700001590
Filed for Record in
ATHENS COUNTY, OHIO
JULIA MICHAEL SCOTT
03-22-2007 At 11:54 am.
SHEED PLAT 86.49
558

CURVE TABLE					
CURVE	DELTA	RADIUS	LENGTH	CHORD DIRECTION	CHORD DISTANCE
C1	20°00'00"	500.00'	174.53'	N49°01'48"E	173.85'
C2	22°46'35"	200.00'	79.50'	N27°38'30"E	78.98'
C3	22°46'35"	400.00'	159.01'	S27°38'30"W	157.96'
C6	47°15'45"	400.00'	329.95'	S27°29'39"W	320.68'
C7	26°04'44"	400.00'	182.07'	N38°05'10"E	180.50'
C8	30°40'58"	400.00'	214.21'	N09°42'19"E	211.66'
C9	52°38'35"	400.00'	367.52'	S20°41'08"W	354.73'
C10	37°21'25"	400.00'	260.80'	S65°41'08"W	258.21'
C11	55°56'29"	1000.00'	976.36'	N56°23'35"E	938.04'
C12	83°11'41"	200.00'	290.40'	S54°02'20"E	265.56'
C13	32°20'54"	300.00'	169.38'	N48°46'46"W	167.13'
C14	49°42'54"	350.00'	303.69'	S87°49'35"W	294.25'
C15	37°46'33"	350.00'	230.76'	N81°51'25"E	226.80'
C16	19°50'53"	350.00'	121.24'	N57°23'31"W	120.64'
C17	44°47'34"	400.00'	312.71'	N73°21'59"W	304.81'
C18	63°20'15"	300.00'	331.63'	S52°34'06"W	315.00'
C19	5°49'02"	575.00'	58.38'	N56°07'17"E	58.38'
C20	14°11'03"	575.00'	142.35'	N46°07'14"E	141.99'
C21	20°00'05"	425.00'	148.36'	N49°01'50"E	147.61'
C22	146°56'39"	55.00'	141.06'	S34°26'32"E	108.45'
C23	68°12'11"	55.00'	65.47'	S73°07'53"W	61.67'
C24	78°44'28"	55.00'	75.59'	N33°23'47"W	69.78'
C25	18°56'55"	200.00'	66.14'	S48°30'18"W	65.84'
C26	41°43'31"	232.00'	168.95'	N37°06'58"E	165.24'
C27	22°46'36"	310.00'	123.23'	N27°38'30"E	122.42'
C28	22°46'36"	370.00'	147.08'	S27°38'30"W	146.12'
C29	22°46'36"	430.00'	170.94'	S27°38'30"W	169.81'
C31	13°51'02"	380.00'	91.86'	S86°10'50"E	91.64'
C32	23°55'31"	380.00'	158.68'	N74°55'54"E	157.53'
C33	49°42'54"	320.00'	277.66'	S87°49'35"W	269.03'
C34	19°50'53"	320.00'	110.85'	N57°23'31"W	110.30'
C35	19°50'53"	380.00'	131.64'	N57°23'31"W	130.98'
C36	37°46'33"	320.00'	210.98'	N81°51'25"E	207.18'
C37	18°53'09"	380.00'	125.26'	S72°24'43"W	124.69'
C38	30°49'45"	380.00'	204.47'	N82°43'50"W	202.01'
C39	47°15'45"	370.00'	305.21'	S27°29'39"W	296.63'
C40	14°25'30"	430.00'	108.26'	S11°04'32"W	107.97'
C41	32°50'15"	430.00'	246.44'	S34°42'25"W	243.08'
C42	35°10'01"	370.00'	227.10'	N21°26'47"E	223.55'
C43	44°47'34"	370.00'	289.26'	N73°21'59"W	281.95'
C44	44°47'34"	430.00'	336.17'	N73°21'59"W	327.67'
C45	63°20'15"	270.00'	298.47'	S52°34'06"W	283.50'
C46	63°20'15"	330.00'	364.80'	S52°34'06"W	346.50'
C47	97°12'56"	55.00'	93.32'	N12°33'48"E	82.52'
C48	26°16'23"	55.00'	25.22'	N74°18'27"E	25.00'
C49	112°10'21"	55.00'	107.68'	S36°28'11"E	91.29'
C50	30°40'32"	55.00'	29.45'	S34°57'16"W	29.10'

CURVE	DELTA	RADIUS	LENGTH	CHORD DIRECTION	CHORD DISTANCE
C51	27°33'06"	55.00'	26.45'	S64°04'05"W	26.19'
C52	10°06'42"	370.00'	65.30'	N46°04'11"E	65.21'
C53	21°43'29"	370.00'	140.29'	N30°09'05"E	139.45'
C54	20°56'40"	370.00'	135.25'	N08°48'00"E	134.50'
C55	3°58'50"	370.00'	25.71'	N03°38'45"W	25.70'
C56	7°23'03"	430.00'	55.42'	N47°26'00"E	55.38'
C57	12°01'49"	430.00'	90.29'	N37°43'35"E	90.12'
C58	32°20'54"	275.00'	155.26'	N48°46'46"W	153.21'
C59	15°13'06"	325.00'	86.32'	N57°20'40"W	86.07'
C60	14°49'09"	325.00'	84.06'	N42°19'32"W	83.83'
C61	2°18'39"	325.00'	13.11'	N33°45'38"W	13.11'
C62	90°57'50"	50.00'	79.38'	S18°05'14"E	71.30'
C63	47°21'30"	50.00'	41.33'	S87°14'54"E	40.16'
C64	46°30'43"	50.00'	40.59'	N45°49'00"E	39.48'
C65	45°01'32"	50.00'	39.29'	N00°02'53"E	38.29'
C66	70°08'25"	50.00'	61.21'	N57°32'06"W	57.46'
C67	12°21'08"	430.00'	92.70'	N12°12'21"E	92.52'
C68	11°39'57"	430.00'	87.55'	N00°11'49"E	87.40'
C69	19°47'00"	225.00'	77.69'	S85°44'40"E	77.30'
C70	20°43'12"	225.00'	81.37'	S65°29'34"E	80.92'
C71	20°31'28"	225.00'	80.60'	S44°52'14"E	80.17'
C72	15°47'51"	225.00'	62.04'	S26°42'35"E	61.84'
C73	38°29'35"	50.00'	33.53'	N36°46'18"E	32.91'
C74	55°17'09"	50.00'	48.25'	N83°37'40"E	46.40'
C75	46°36'05"	50.00'	40.67'	S45°25'42"E	39.56'
C76	57°22'59"	50.00'	50.08'	S06°33'50"W	48.01'
C77	102°18'12"	50.00'	89.28'	S86°24'25"W	77.88'
C78	99°08'21"	50.00'	86.52'	S22°52'18"E	76.12'
C79	45°43'08"	50.00'	39.90'	S49°33'26"W	38.85'
C80	55°13'43"	50.00'	48.20'	N79°58'09"W	46.35'
C81	60°56'48"	50.00'	53.19'	N21°52'53"W	50.71'
C82	38°58'00"	50.00'	34.00'	N28°04'31"E	33.35'
C83	73°16'35"	175.00'	223.81'	S58°59'53"E	208.87'
C84	9°55'06"	175.00'	30.29'	S17°24'02"E	30.26'
C85	9°56'11"	430.00'	74.57'	S02°39'49"W	74.48'
C86	11°21'37"	430.00'	85.26'	S13°18'43"W	85.12'
C87	11°52'33"	430.00'	89.13'	S24°55'49"W	88.97'
C88	9°28'27"	430.00'	71.10'	S35°36'19"W	71.02'
C89	96°52'57"	50.00'	84.55'	S54°33'06"E	74.83'
C90	53°07'03"	50.00'	46.35'	S20°26'54"W	44.71'
C91	54°01'20"	50.00'	47.14'	S74°01'05"W	45.42'
C92	95°58'40"	50.00'	83.76'	N30°58'55"W	74.30'
C93	21°18'17"	370.00'	137.58'	S05°00'58"W	136.79'
C94	25°36'50"	370.00'	165.41'	S28°28'32"W	164.03'
C95	21°26'21"	370.00'	138.45'	S52°00'07"W	137.64'
C96	21°38'33"	370.00'	139.76'	S73°32'34"W	138.93'
C97	8°33'01"	430.00'	64.17'	S57°56'48"W	64.11'
C98	11°17'18"	430.00'	84.72'	S67°51'58"W	84.58'
C99	10°51'13"	430.00'	81.46'	S78°56'13"W	81.33'
C100	1°52'27"	1030.00'	33.69'	N83°25'37"E	33.69'

CURVE	DELTA	RADIUS	LENGTH	CHORD DIRECTION	CHORD DISTANCE
C101	2°33'17"	970.00'	43.25'	N83°05'12"E	43.25'
C102	54°04'03"	1030.00'	971.97'	N55°27'22"E	936.30'
C103	6°32'34"	970.00'	110.77'	N78°32'17"E	110.71'
C104	6°27'49"	970.00'	109.43'	N72°02'05"E	109.37'
C105	9°59'52"	970.00'	169.26'	N63°48'15"E	169.05'
C106	6°21'29"	970.00'	107.64'	N58°37'34"E	107.58'
C107	7°26'15"	970.00'	125.91'	N48°43'43"E	125.83'
C108	7°10'17"	970.00'	121.41'	N41°25'27"E	121.33'
C109	9°24'57"	970.00'	159.41'	N33°07'49"E	159.23'
C113	53°14'47"	300.00'	278.80'	N77°35'36"W	268.87'
C115	84°07'17"	250.00'	367.05'	S07°59'57"W	334.96'
C116	65°38'07"	220.00'	252.02'	S08°54'16"W	238.47'
C117	84°07'17"	280.00'	411.10'	S07°59'57"W	375.15'
C118	37°52'56"	270.00'	178.52'	N31°07'07"E	175.28'
C119	37°52'56"	300.00'	198.35'	N31°07'07"E	194.76'
C120	37°52'56"	330.00'	218.19'	N31°07'07"E	214.23'
C121	18°48'18"	300.00'	98.46'	S39°34'29"W	98.02'
C122	12°46'44"	330.00'	73.60'	S18°34'01"W	73.45'
C123	13°35'20"	330.00'	78.27'	S42°10'58"W	78.08'
C124	17°59'42"	300.00'	94.22'	S21°10'29"W	93.83'
C125	18°48'18"	300.00'	98.46'	S39°34'29"W	98.02'
C127	20°36'16"	120.00'	43.15'	S49°31'32"E	42.92'
C128	20°36'16"	150.00'	53.94'	S49°31'32"E	53.65'
C129	20°36'16"	180.00'	64.73'	S49°31'32"E	64.38'
C130	21°06'07"	430.00'	158.37'	S28°50'21"W	157.47'
C131	14°25'30"	430.00'	108.26'	S11°04'32"W	107.97'
C132	21°06'07"	430.00'	158.37'	S28°50'21"W	157.47'
C133	83°23'26"	305.00'	443.91'	N89°19'39"W	405.75'
C134	87°44'43"	275.00'	421.15'	N87°09'01"W	381.18'
C135	82°19'24"	245.00'	352.02'	N89°51'40"W	322.51'
C136	47°15'45"	370.00'	305.21'	S27°29'39"W	296.63'
C137	44°47'34"	400.00'	312.71'	N73°21'59"W	304.81'
C138	286°15'37"	50.00'	249.81'	S50°46'36"W	60.00'
C147	8°20'16"	220.00'	32.01'	S45°53'27"W	31.99'
C150	12°57'02"	776.20'	175.44'	N44°15'34"W	175.07'
C152	40°10'14"	350.00'	245.39'	N80°34'35"E	240.39'
C156	23°02'06"	350.00'	140.71'	S72°00'31"W	139.77'
C164	30°42'00"	320.00'	171.46'	S32°07'05"E	169.42'
C165	30°42'00"	350.00'	187.54'	S32°07'05"E	185.30'
C166	30°42'00"	380.00'	203.61'	S32°07'05"E	201.18'
C168	4°59'56"	970.00'	84.63'	N66°18'13"E	84.60'
C169	4°59'56"	970.00'	84.63'	N61°18'17"E	84.60'
C170	5°49'02"	575.00'	58.38'	N56°07'17"E	58.36'
C171	14°11'04"	575.00'	142.35'	N46°07'14"E	141.99'
C172	28°17'07"	430.00'	212.28'	N24°53'14"E	210.13'
C173	6°52'54"	430.00'	51.65'	N07°18'14"E	51.62'
C174	36°47'59"	270.00'	173.41'	S30°34'38"W	170.45'
C178	20°00'06"	575.00'	200.73'	N49°01'45"E	199.71'
C179	35°10'01"	430.00'	263.92'	N21°28'47"E	259.80'
C183	7°29'54"	970.00'	126.94'	N65°03'14"E	126.85'
C184	8°51'27"	970.00'	149.95'	N56°52'33"E	149.80'
C185	38°24'11"	400.00'	268.10'	N76°33'40"W	263.12'
C186	6°23'23"	400.00'	44.61'	N54°09'53"W	44.58'
C187	6°51'25"	200.00'	23.94'	S72°21'18"W	23.92'
C188	79°42'22"	250.00'	347.78'	N56°37'15"W	320.41'
C189	30°42'01"	350.00'	187.54'	S32°07'05"E	185.30'
C190	13°50'54"	350.00'	84.59'	S86°15'45"E	84.39'
C191	26°19'21"	350.00'	160.80'	N73°39'08"E	159.39'

LINE TABLE		
LINE	LENGTH	BEARING
L1	21.94	N15°38'14"E
L2	36.67	N78°08'53"W
L4	87.62	S66°47'33"W
L5	71.86	S63°23'24"W
L6	62.56	S60°16'05"W
L7	73.29	N63°23'24"E
L8	64.69	N60°16'05"E
L11	26.04	S16°15'12"W
L20	36.86	N72°32'45"E
L21	36.86	N22°27'10"W
L22	68.17	S64°57'12"E
L23	13.90	S64°57'12"E
L24	13.90	N64°57'12"W
L25	50.30	N32°36'19"W
L26	45.98	N32°36'19"W
L27	41.22	N32°36'19"W
L28	63.45	N55°20'11"E
L29	35.36	S50°38'10"E
L30	35.87	S40°11'48"W
L31	36.32	S59°02'02"E
L32	35.36	S32°33'31"W
L33	25.00	N12°26'29"W
L34	32.44	S14°21'32"E
L35	17.67	N12°26'29"W
L36	52.44	N14°49'22"E
L37	55.82	