

HORIZONTAL SCALE IN FEET  
0 200 400 600

BY/DESIGNER: GJC  
P/P REVIEWER: SLM

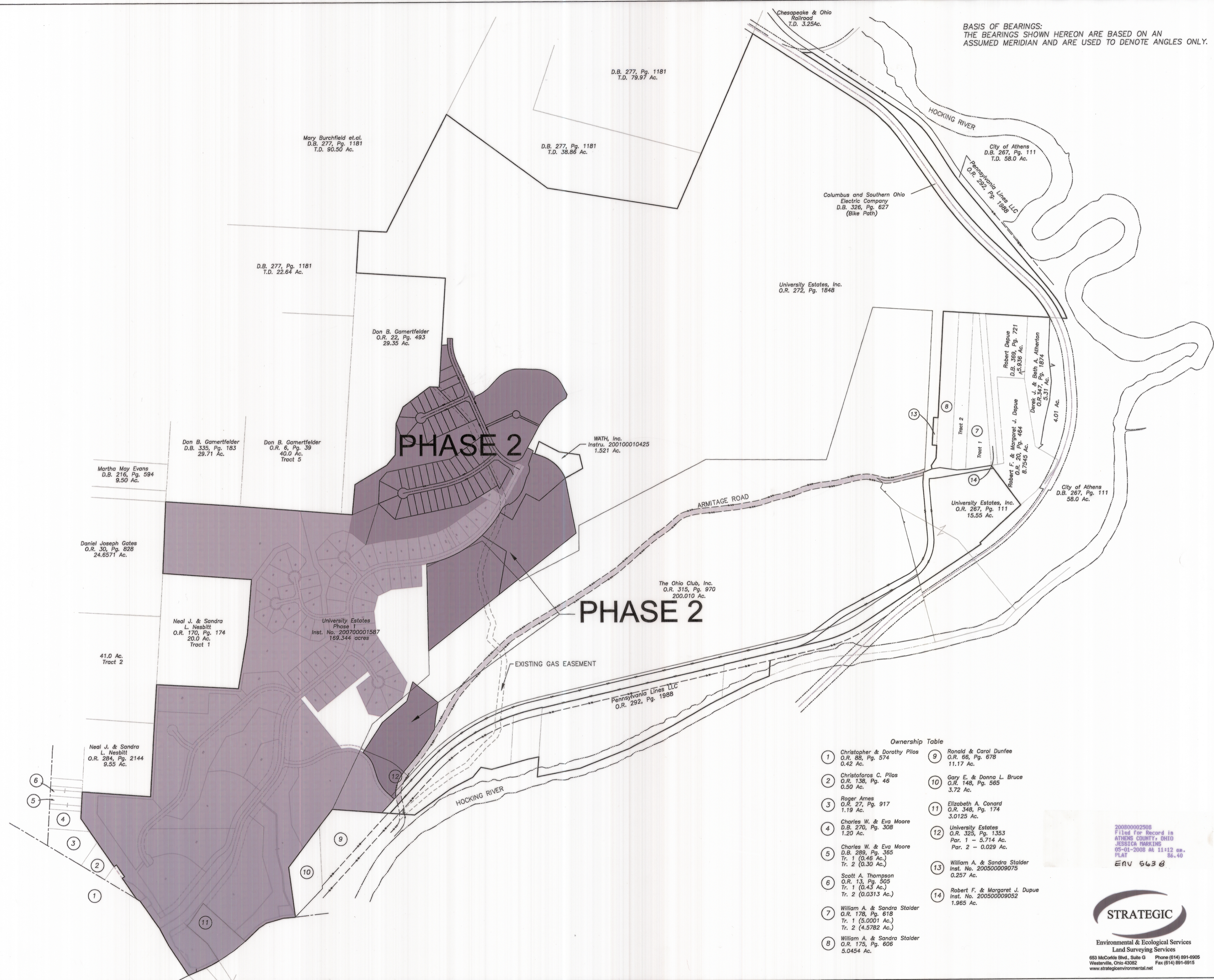
UNIVERSITY ESTATES  
PHASE 2

FINAL PLAT

DATE: 12/10/07

2  
5

BASIS OF BEARINGS:  
THE BEARINGS SHOWN HEREON ARE BASED ON AN ASSUMED MERIDIAN AND ARE USED TO DENOTE ANGLES ONLY.



Ownership Table

1 Christopher & Dorothy Pulos O.R. 88, Pg. 574 0.42 Ac.	9 Ronald & Carol Dunfee O.R. 66, Pg. 678 11.17 Ac.
2 Christoforos C. Pulos O.R. 138, Pg. 46 0.50 Ac.	10 Gary E. & Donna L. Bruce O.R. 148, Pg. 565 3.72 Ac.
3 Roger Ames O.R. 27, Pg. 917 1.19 Ac.	11 Elizabeth A. Conard O.R. 348, Pg. 174 3.0125 Ac.
4 Charles W. & Eva Moore D.B. 270, Pg. 308 1.20 Ac.	12 University Estates O.R. 325, Pg. 1353 Par. 1 - 5.714 Ac. Par. 2 - 0.029 Ac.
5 Charles W. & Eva Moore D.B. 289, Pg. 365 Tr. 1 (0.46 Ac.) Tr. 2 (0.30 Ac.)	13 William A. & Sandra Stalder Inst. No. 20050009075 0.257 Ac.
6 Scott A. Thompson O.R. 13, Pg. 505 Tr. 1 (0.43 Ac.) Tr. 2 (0.0313 Ac.)	14 Robert F. & Margaret J. Dupue Inst. No. 20050009052 1.965 Ac.
7 William A. & Sandra Stalder O.R. 178, Pg. 618 Tr. 1 (5.0001 Ac.) Tr. 2 (4.5782 Ac.)	
8 William A. & Sandra Stalder O.R. 175, Pg. 606 5.0454 Ac.	

20080002508  
Filed for Record in  
ATHENS COUNTY, OHIO  
JESSICA HARKINS  
05-01-2008 At 11:12 am.  
PLAT 86.40  
ENV 5638



Environmental & Ecological Services  
Land Surveying Services  
653 McCurtis Blvd., Suite G Phone (614) 891-8905  
Westerville, Ohio 43082 Fax (614) 891-8915  
www.strategicenvironmental.net