



HORIZONTAL SCALE IN FEET

JOB NUMBER COL-2007605

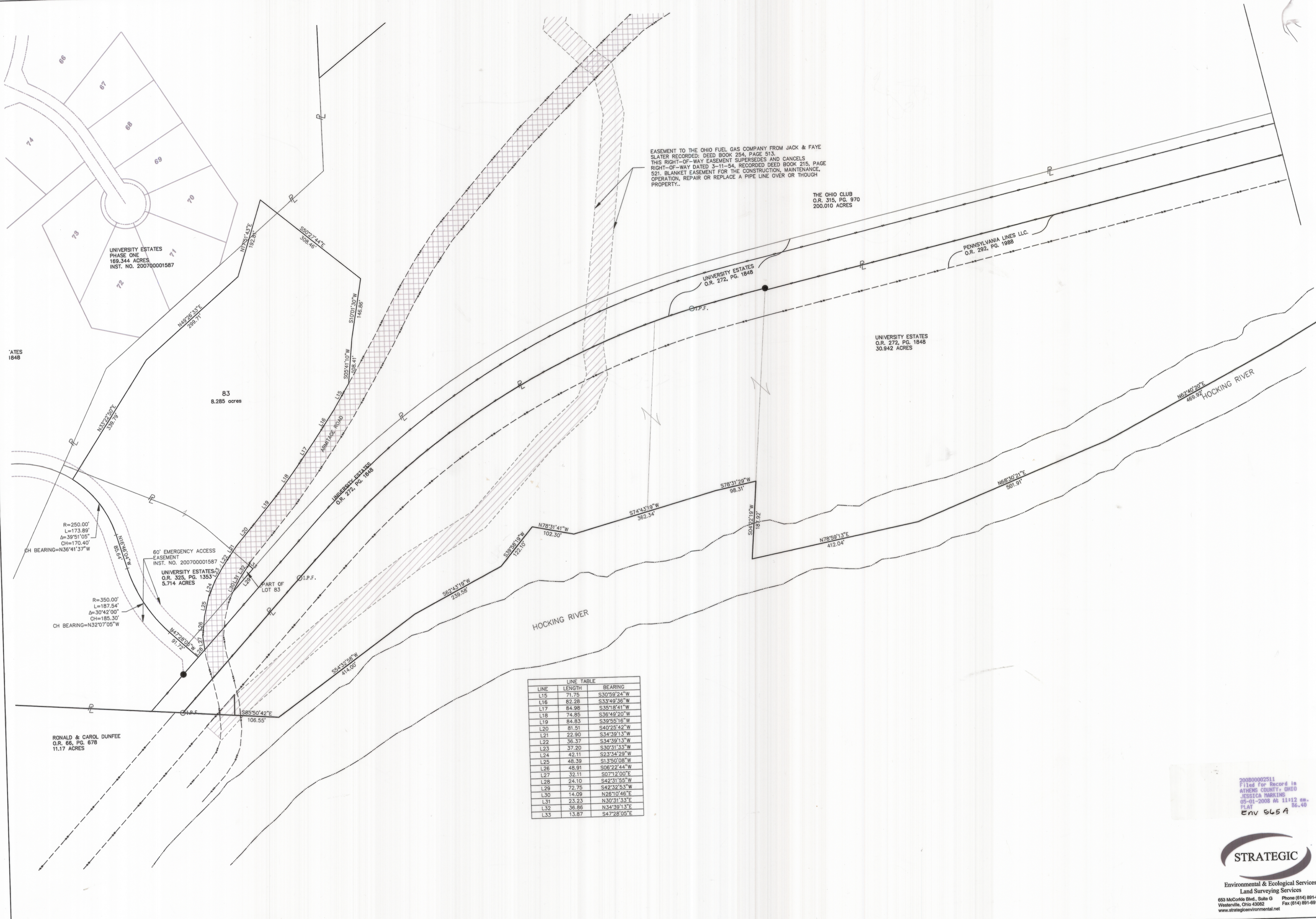
P/W DESIGNER GJC
P/W REVIEWER SLM

UNIVERSITY ESTATES PHASE 2

FINAL PLAT

DATE: 01/02/08

5
5



EASEMENT TO THE OHIO FUEL GAS COMPANY FROM JACK & FAYE SLATER RECORDED: DEED BOOK 254, PAGE 513. THIS RIGHT-OF-WAY EASEMENT SUPERSEDES AND CANCELS RIGHT-OF-WAY DATED 3-11-54, RECORDED DEED BOOK 215, PAGE 521. BLANKET EASEMENT FOR THE CONSTRUCTION, MAINTENANCE, OPERATION, REPAIR OR REPLACE A PIPE LINE OVER OR THROUGH PROPERTY.

THE OHIO CLUB
O.R. 315, PG. 970
200.010 ACRES

PENNSYLVANIA LINES LLC.
O.R. 292, PG. 1988

UNIVERSITY ESTATES
O.R. 272, PG. 1848

UNIVERSITY ESTATES
O.R. 272, PG. 1848
30.942 ACRES

UNIVERSITY ESTATES
PHASE ONE
169.344 ACRES
INST. NO. 200700001587

83
8.285 acres

60' EMERGENCY ACCESS
EASEMENT
INST. NO. 200700001587
UNIVERSITY ESTATES
O.R. 325, PG. 1353
5.714 ACRES

RONALD & CAROL DUNFEE
O.R. 66, PG. 678
11.17 ACRES

LINE	LENGTH	BEARING
L15	71.75	S30°59'24"W
L16	82.28	S33°49'36"W
L17	84.98	S35°18'41"W
L18	74.85	S38°49'20"W
L19	84.83	S39°25'18"W
L20	81.51	S40°25'42"W
L21	22.90	S34°39'13"W
L22	36.37	S34°39'13"W
L23	37.20	S30°31'33"W
L24	42.11	S23°34'29"W
L25	48.39	S13°50'08"W
L26	48.91	S06°22'44"W
L27	32.11	S02°12'00"E
L28	24.10	S42°31'55"W
L29	72.75	S42°32'53"W
L30	14.09	N26°10'46"E
L31	23.23	N30°31'33"E
L32	36.86	N34°59'13"E
L33	13.87	S47°28'09"E

20080002511
Filed for Record in
ATHENS COUNTY, OHIO
JESSICA PARKING
05-01-2008 At 11:12 am.
PLAT 56.40
ENV 565A



Environmental & Ecological Services
Land Surveying Services
655 McCortie Blvd., Suite G
Westerline, Ohio 43082
Phone (614) 891-6905
Fax (614) 891-6915
www.strategicenvironmental.net