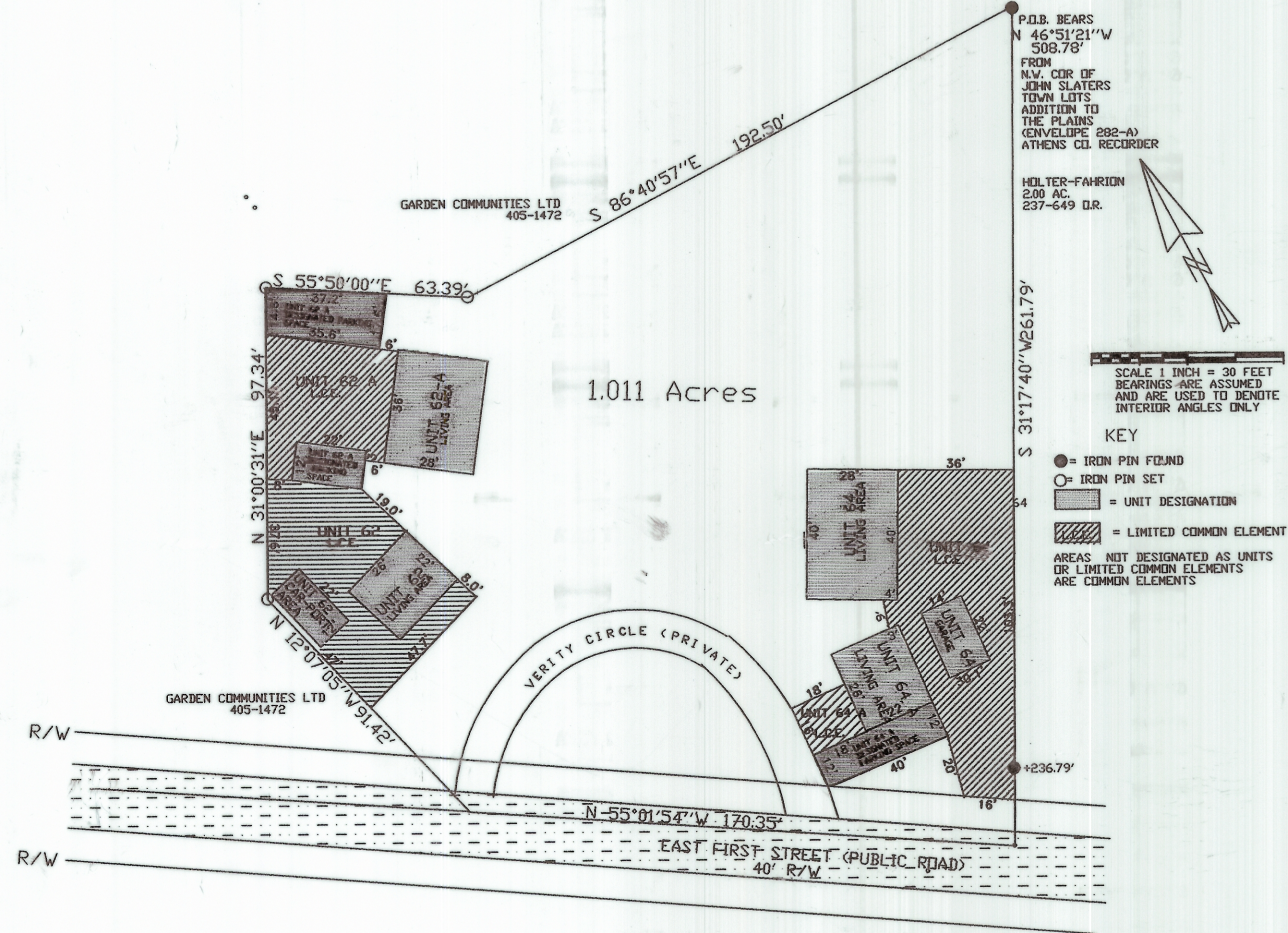


Verity Village Condominium- The Drawings

SITUATED IN L.L. 112, SECTION 24, T.9, R.14,
ATHENS TOWNSHIP, ATHENS COUNTY, OHIO



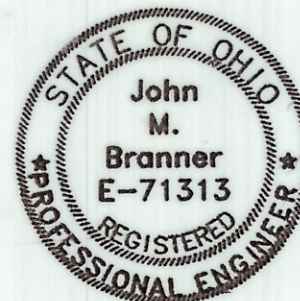
I HEREBY CERTIFY THAT THIS DRAWING, CONSISTING OF 1 SHEET ACCURATELY REFLECTS THE LOCATION OF IMPROVEMENTS AND RECORDED EASEMENTS OF VERITY VILLAGE CONDOMINIUM

JOHN M. BRANNER P.S. 6805
12500 N. PEACH RIDGE ROAD
ATHENS, OHIO 45701



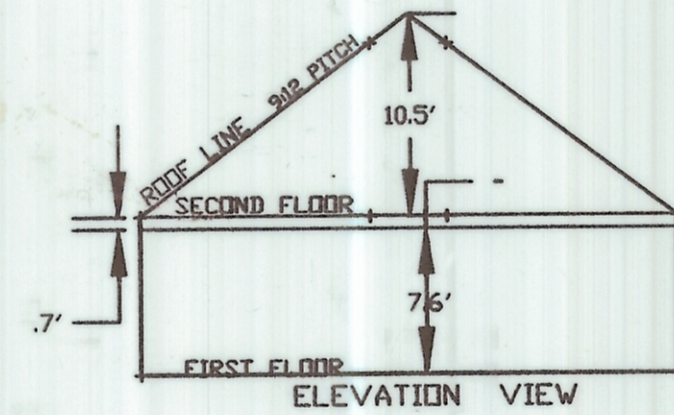
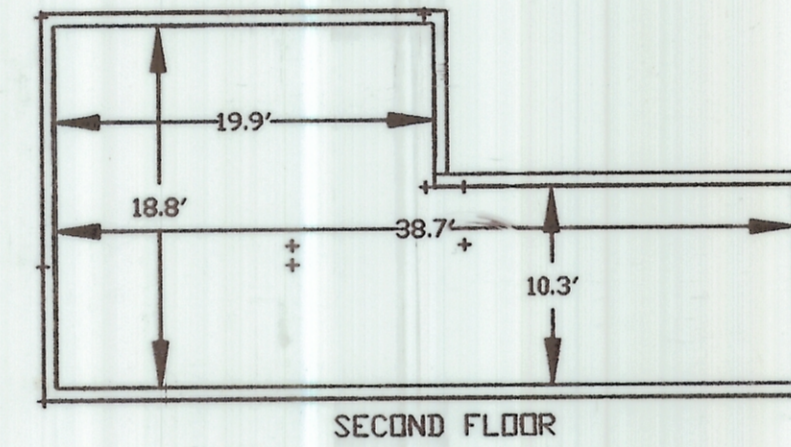
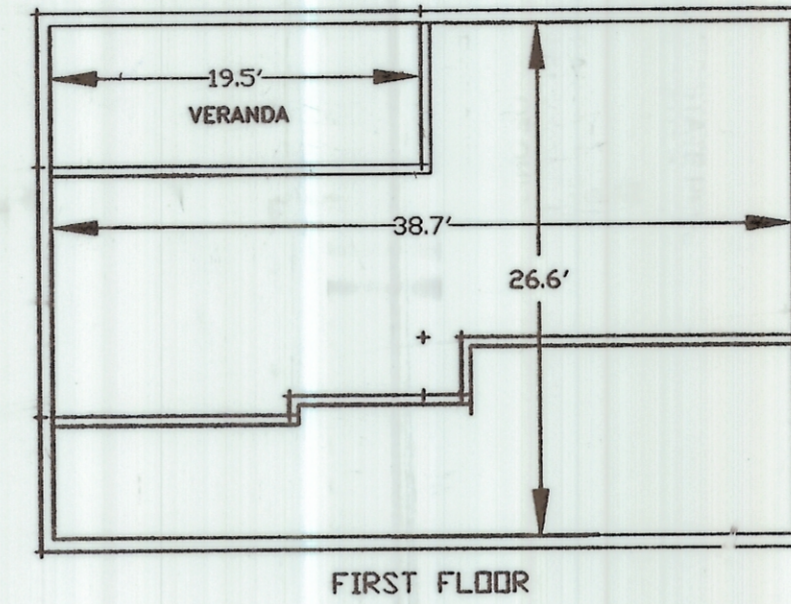
I HEREBY CERTIFY THAT THIS DRAWING, CONSISTING OF 1 SHEET ACCURATELY SHOWS EACH BUILDING OF VERITY VILLAGE CONDOMINIUM AS CONSTRUCTED

JOHN M. BRANNER P.E. 71313
12500 N. PEACH RIDGE ROAD
ATHENS, OHIO 45701

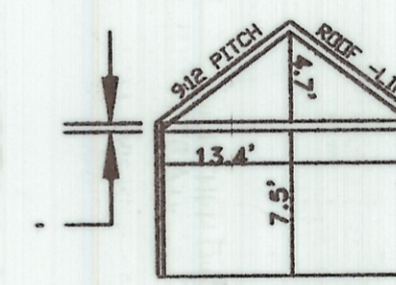


UNIT	Bearing	Distance
60-A (LIVING AREA)	S 87°28'17"W	197.42'
60 (LIVING AREA)	S 80°25'41"W	225.91'
61 (LIVING AREA)	S 80°25'59"W	250.08'
62 (LIVING AREA)	S 83°11'45"W	283.38'
63 (GARAGE)	S 78°25'57"W	292.05'
64 (LIVING AREA)	S 42°28'29"W	189.59'
64-A (LIVING AREA)	S 36°28'18"W	184.45'
62-A (GARAGE)	S 33°24'38"W	203.97'
62-A (LIVING AREA)	S 31°16'57"W	215.15'

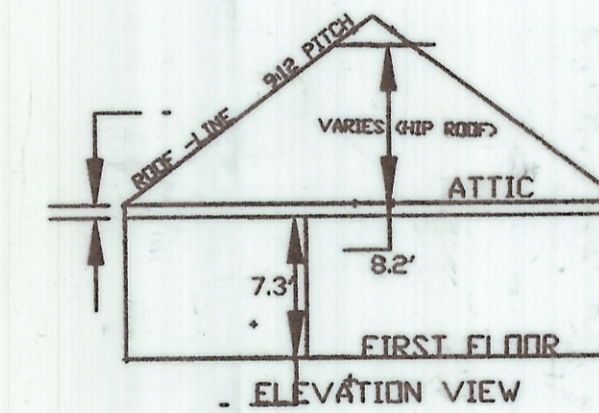
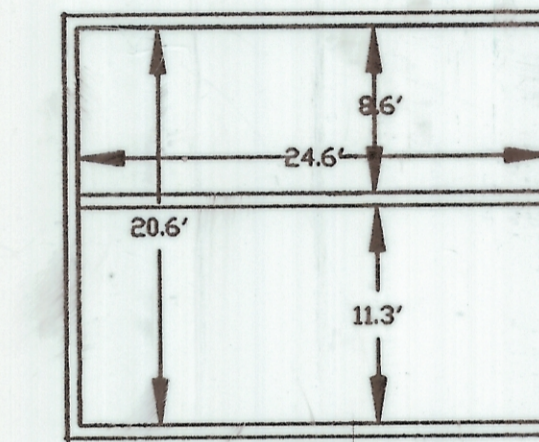
*UNIT LOCATIONS ARE REFERENCED FROM P.O.B. TO THE NORTH-EAST AND SOUTH-EAST CORNER OF EACH LIVING UNIT RESPECTIVELY.



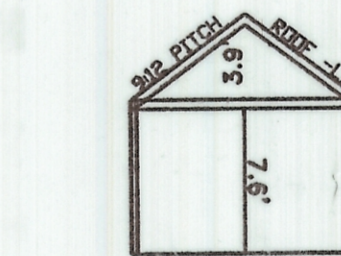
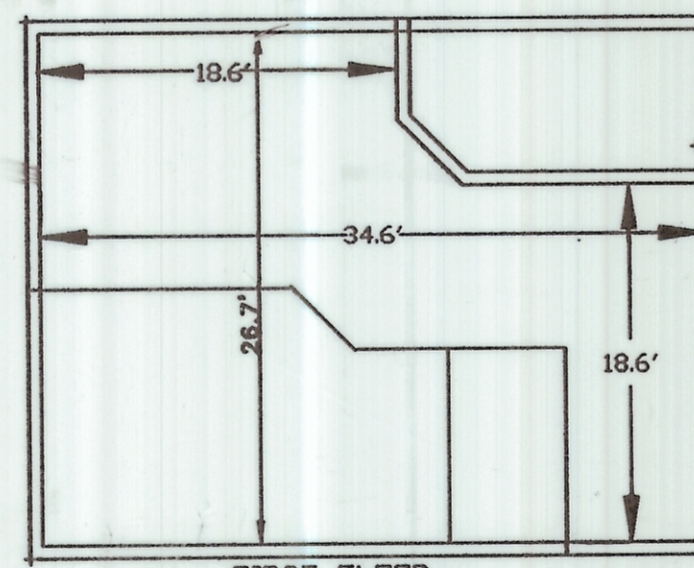
UNIT 64 (LIVING AREA)



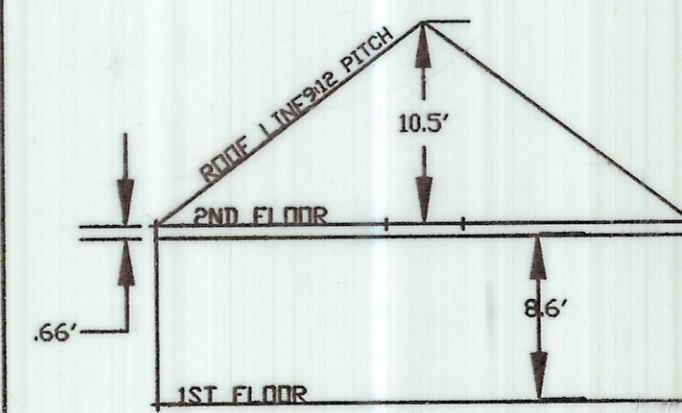
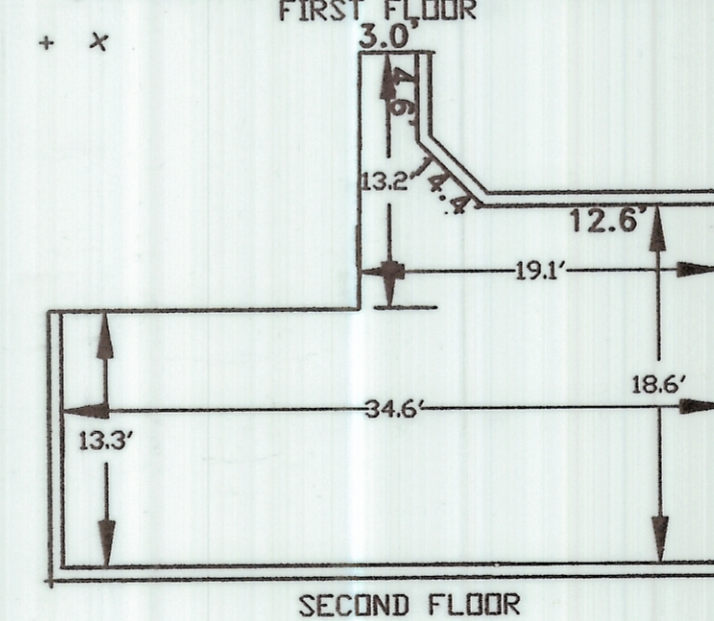
UNIT 64 (GARAGE AREA)



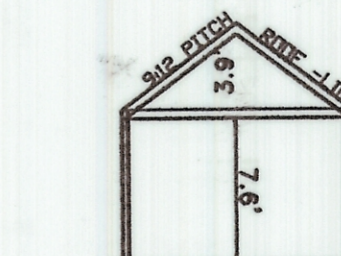
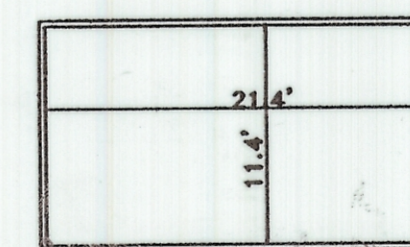
UNIT 64-A (LIVING AREA)



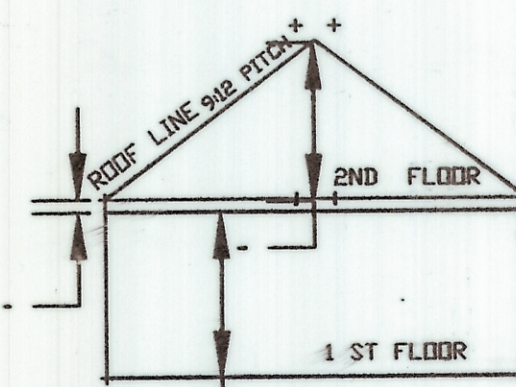
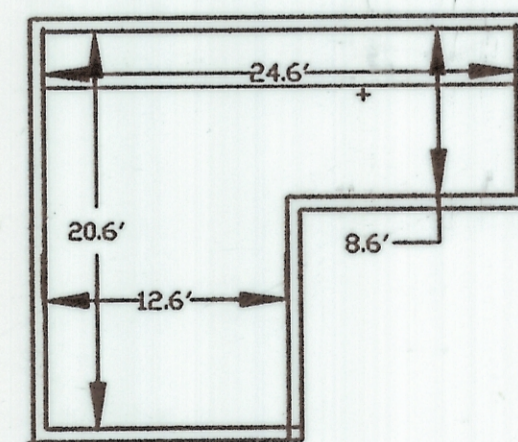
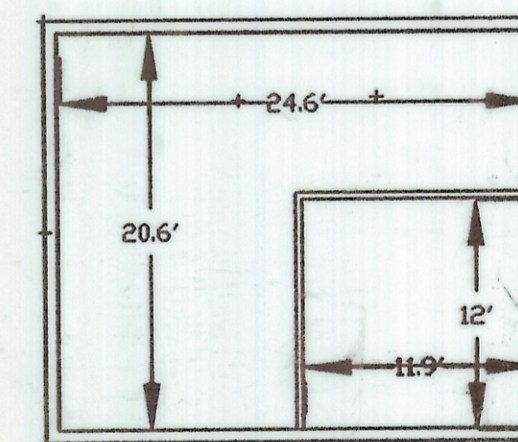
UNIT 62 (CAR-PORT AREA)



UNIT#62-A (LIVING AREA)



UNIT 62 A (CAR PORT AREA)



UNIT 62 (LIVING AREA)

CONDOMINIUM DRAWINGS
SCALE 1 INCH = 10 FEET

See Declaration & Bylaws in OR 410 Pg 1764