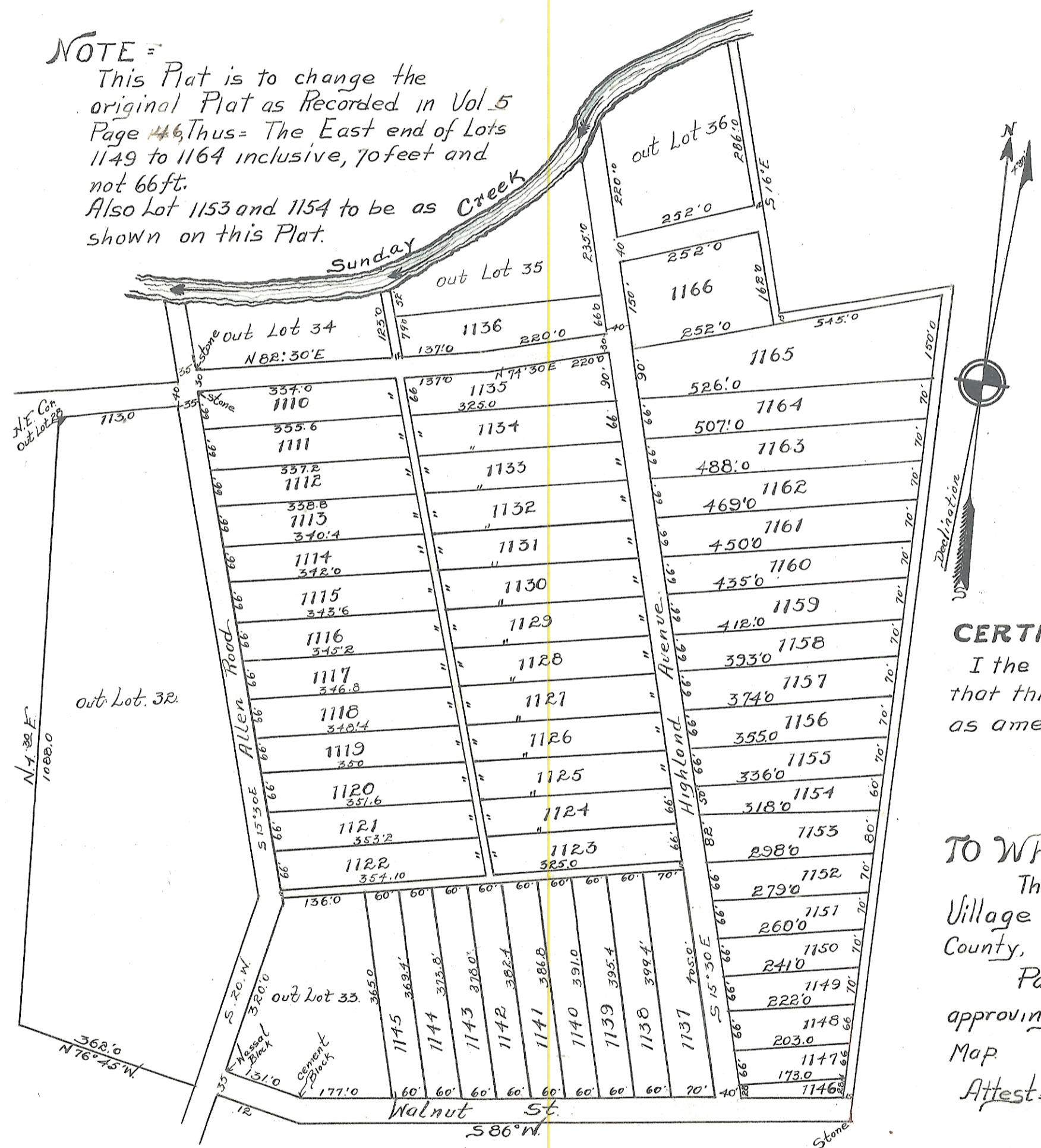


AMENDED MAP OF WALNUT - HILL ADDITION TO THE VILLAGE OF GLOUSTER ATHENS COUNTY, OHIO.

ENVELOPE: 259A
WALNUT HILL ADDITION
GLOUSTER

NOTE:

This Plat is to change the original Plat as Recorded in Vol. 5 Page 46 Thus - The East end of Lots 1149 to 1164 inclusive, 70 feet and not 66 ft. Also Lot 1153 and 1154 to be as shown on this Plat.



Scale 1, 1 inch = 200 ft,
August 20th 1920
J.A. Richards - Eng.
Glouster, Ohio.

BOUNDARY

Beginning at the north east corner of out Lot 28 in the Village of Glouster, Ohio. Thence North 84°30' East a distance of 113 ft. Thence N 15°30' West a distance of 175 ft. to center of Sunday creek. Thence East a distance of 258 ft. with meandering of Sunday Creek. Thence North 64° East a distance of 286 ft. along center of Sunday Creek. Thence North 61° East a distance of 350 ft. Thence south 15°30' East a distance of 433 ft. Thence North 70° East a distance of 356 ft. to the east line of Fraction 3. Thence south along east line of Fraction 3 to a stone at the south east corner of land of J.W. Allen. Thence S 86° West a distance of 970 ft. Thence North 76° 45' West a distance of 510 ft. Thence North 4°30' East a distance of 1088 ft. to place of beginning, containing 61 Lots, 4 streets and 4 alleys.

CERTIFICATE OF ENGINEER

I the undersign hereby certify that this map is true and correct as amended.

J.A. Richards.

TO WHOM CONCERNED.

That the Council of the Village of Glouster, Athens County, Ohio.

Passed Ordinance No 153 approving the above Amended

Map August 20th 1920.

Attest: { Chas. F. Wallace ... Mayor
Reuben Wagner ... Clerk.

Received Dec 28 - 1920

Recorded Jan. 5 - 1921.

J. H. Worthington Recorder (#1055)